



**Price**

**£1,600 PCM**

Fees Apply



Available 09/03/26

**Castle Avenue  
Broadstairs CT10**

*Wards*

Helping you move forwards





## Main Features

Sought After Broadstairs Location

Driveway and Garage

Detached Bungalow

Large Rear Garden

Seaside Location

Large Lounge and Kitchen

## Accommodation



**Deposit required is £1,846.15**  
**Thanet District - Council Tax Band Tax Band D**

Renting a property is a big commitment and we recommend that you visit the local authority website and these websites which offer helpful information and advice about letting

[www.gov.uk/government/publications/how-to-rent](http://www.gov.uk/government/publications/how-to-rent)

[www.gov.uk/private-renting](http://www.gov.uk/private-renting)

[www.wardsofkent.co.uk/renting/tenancy-fees-individuals/](http://www.wardsofkent.co.uk/renting/tenancy-fees-individuals/)

[www.gov.uk/green-deal-energy-saving-measures](http://www.gov.uk/green-deal-energy-saving-measures)

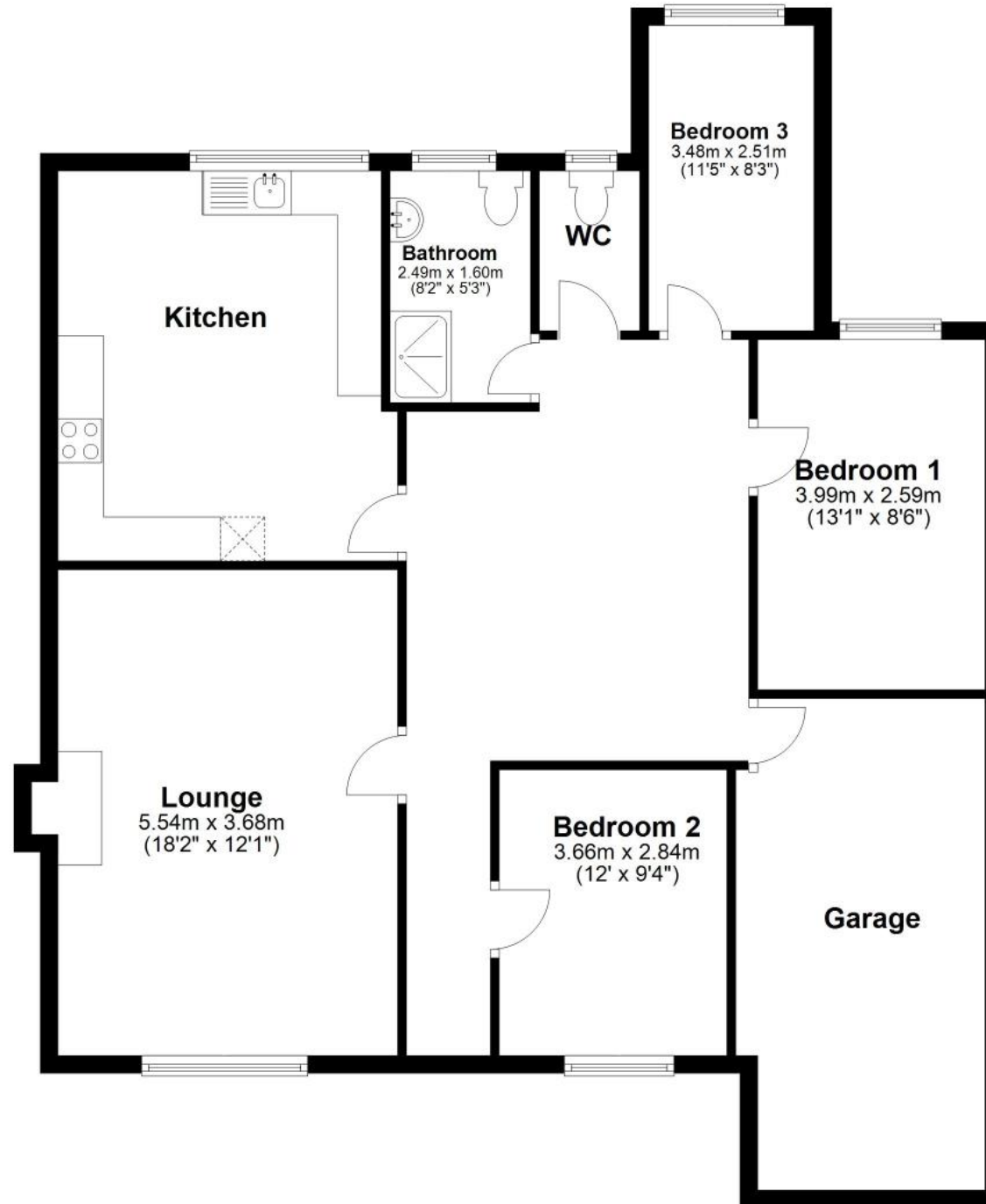
**Call Thanet 01843 597600 ■ [wardsofkent.co.uk](http://wardsofkent.co.uk)**

IMPORTANT INFORMATION: Please contact our Lettings Team who will confirm the total costs involved in renting this property. For clarification, we wish to inform the prospective tenant that we have prepared these details as a general guide. The agent has not carried out a detailed survey nor tested the services, appliances, or specific fittings (unless otherwise stated), and no warranty can be given as to their condition. All room measurements are taken at floor level. We strongly recommend that all the information which we provide about the property is verified by yourself and your advisers. The contents of this publication are © Wards, 2015. Wards is a trading name of Arun Estates Limited Registered in England No. 2597969

<b>EPC RATING</b> 	<b>CURRENT:</b> <b>POTENTIAL:</b>

## Ground Floor

Approx. 112.7 sq. metres (1212.8 sq. feet)



Total area: approx. 112.7 sq. metres (1212.8 sq. feet)