



Price

£1,600 PCM

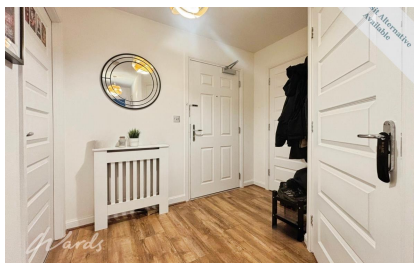
Fees Apply



Available 07/02/26

**Laurence Rise Dartford
DA2**

Wards
Helping you move forwards



Main Features

Immaculate second floor flat

Ample storage space

Balcony

En-suite to main bedroom

One allocated parking space

Excellent motorway and transport links

Accommodation

Entrance Hallway

Open Plan Lounge/Kitchen 5.66m x 4.12m

Bedroom 1 3.38m x 3.36m

En-suite shower room 1.46m x 2.16m

Bedroom 2 2.47m x 4.38m

Bathroom 1.67m x 2.13m

Balcony 3.4m x 1.7m



Deposit required is £1,846.15
Dartford District - Council Tax Band Tax Band D

Renting a property is a big commitment and we recommend that you visit the local authority website and these websites which offer helpful information and advice about letting

www.gov.uk/government/publications/how-to-rent

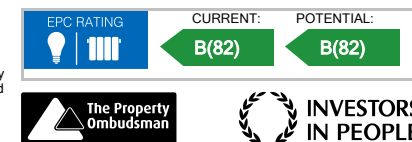
www.gov.uk/private-renting

www.wardsofkent.co.uk/renting/tenancy-fees-individuals/

www.gov.uk/green-deal-energy-saving-measures

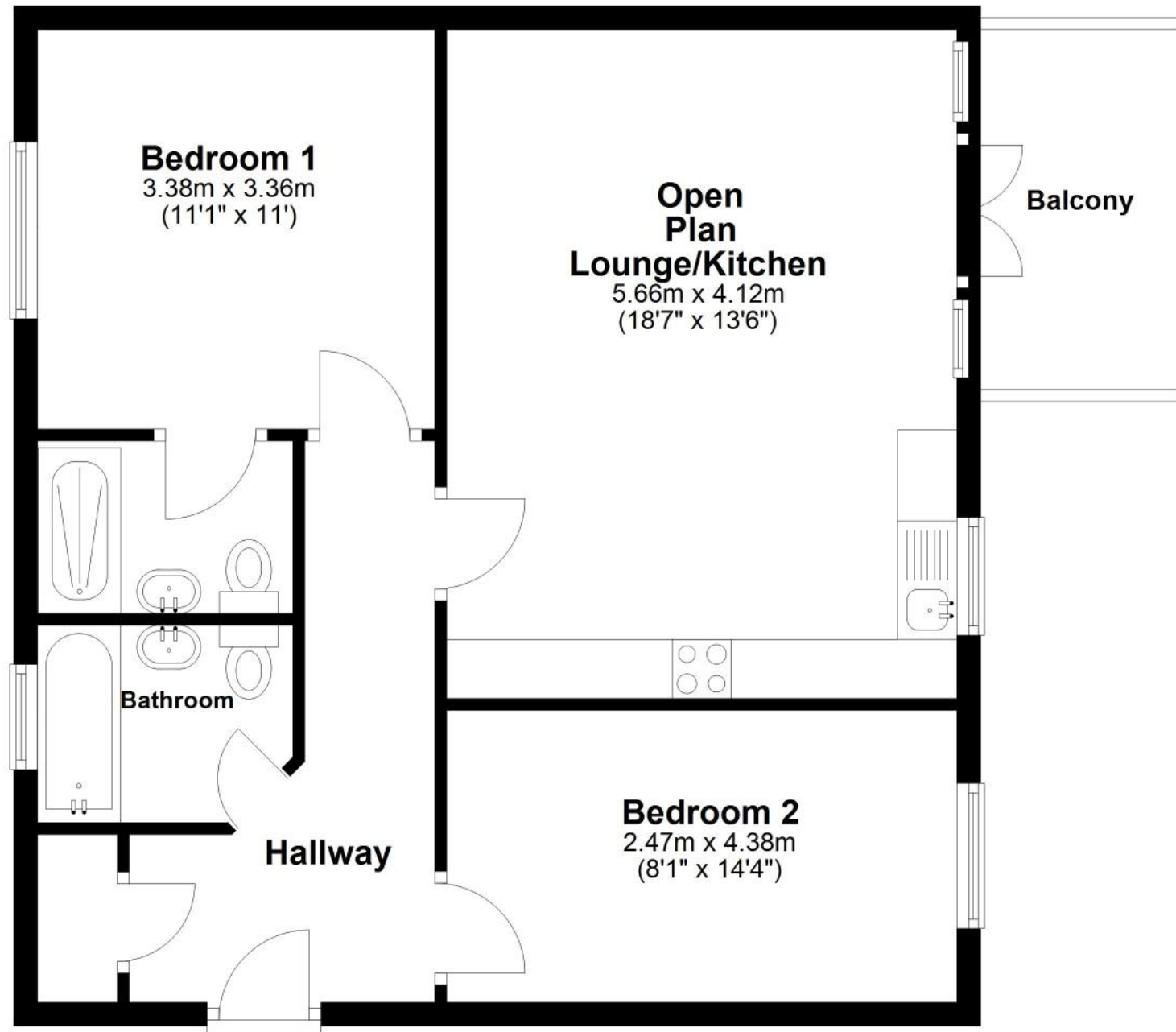
Call Dartford 01322 311291 ■ wardsofkent.co.uk

IMPORTANT INFORMATION: Please contact our Lettings Team who will confirm the total costs involved in renting this property. For clarification, we wish to inform the prospective tenant that we have prepared these details as a general guide. The agent has not carried out a detailed survey nor tested the services, appliances, or specific fittings (unless otherwise stated), and no warranty can be given as to their condition. All room measurements are taken at floor level. We strongly recommend that all the information which we provide about the property is verified by yourself and your advisers. The contents of this publication are © Wards, 2015. Wards is a trading name of Arun Estates Limited Registered in England No. 2597969



Second Floor

Approx. 63.0 sq. metres (678.6 sq. feet)



Total area: approx. 63.0 sq. metres (678.6 sq. feet)