

cubitt  
& west



Price

£1,700 PCM

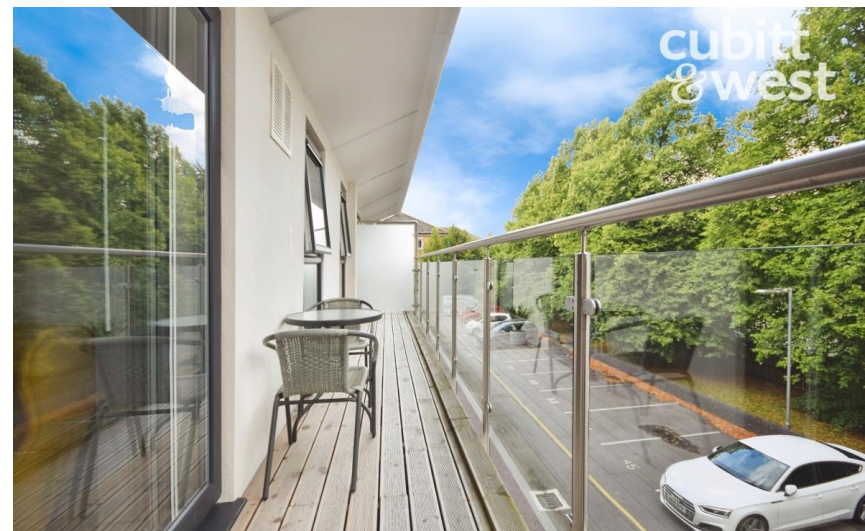
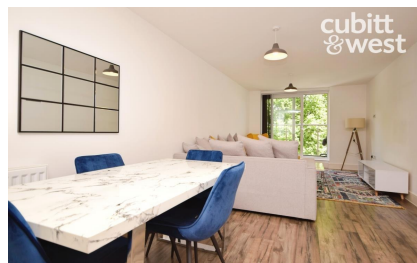
Fees Apply



Available 25/03/26

Russell Way Crawley  
RH10

cubitt & west  
Helping you move forwards



## Main Features

Deposit Alternative Available

Open House Event

Long Term Let

Modern First Floor Apartment

Two Double Bedrooms With En-Suite

Extra Room For Office Or Sleeping



Deposit required is £1,961.54  
Crawley District - Council Tax Band Tax Band C

Renting a property is a big commitment and we recommend that you visit the local authority website and these websites which offer helpful information and advice about letting

[www.gov.uk/government/publications/how-to-rent](http://www.gov.uk/government/publications/how-to-rent)

[www.gov.uk/private-renting](http://www.gov.uk/private-renting)

[www.cubittandwest.co.uk/renting/tenancy-fees-individuals/](http://www.cubittandwest.co.uk/renting/tenancy-fees-individuals/)

[www.gov.uk/green-deal-energy-saving-measures](http://www.gov.uk/green-deal-energy-saving-measures)

**Call Crawley 01293 544100 ■ [cubittandwest.co.uk](http://cubittandwest.co.uk)**

IMPORTANT INFORMATION: Please contact our Lettings Team who will confirm the total costs involved in renting this property. For clarification, we wish to inform the prospective tenant that we have prepared these details as a general guide. The agent has not carried out a detailed survey nor tested the services, appliances, or specific fittings (unless otherwise stated), and no warranty can be given as to their condition. All room measurements are taken at floor level. We strongly recommend that all the information which we provide about the property is verified by yourself and your advisers. The contents of this publication are © Cubitt & West, 2015. Cubitt & West is a trading name of Arun Estates Limited Registered in England No. 2597969

## Accommodation

Hallway

Open-Plan Kitchen/Lounge

Bedroom 1

En-Suite Shower Room

Bedroom 2

Family Bathroom

Bedroom 3/Study

Balcony

Allocated Parking





# First Floor

Approx. 89.8 sq. metres (966.4 sq. feet)

