



**Price**

**£1,250 PCM**

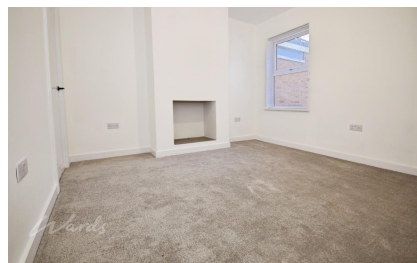
Fees Apply



Available 07/01/26

**Cowper Road  
Sittingbourne ME10**

*Wards*  
Helping you move forwards



## Main Features

Two Bedroom Terrace  
Refurbished Throughout  
Garden  
Street Parking  
Popular Location  
Unfurnished

## Accommodation

Porch  
Lounge 3.67 x 3.36  
Dining Room 3.72 x 3.34  
Kitchen 2.87 x 1.97  
Bathroom 1.70 x 1.96  
Bedroom 1 3.62 x 3.39  
Bedroom 2 3.37 x 3.70



**Deposit required is £1,442.31**  
**Swale District - Council Tax Band Tax Band B**

Renting a property is a big commitment and we recommend that you visit the local authority website and these websites which offer helpful information and advice about letting

[www.gov.uk/government/publications/how-to-rent](http://www.gov.uk/government/publications/how-to-rent)

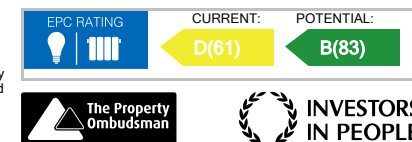
[www.gov.uk/private-renting](http://www.gov.uk/private-renting)

[www.wardsofkent.co.uk/renting/tenancy-fees-individuals/](http://www.wardsofkent.co.uk/renting/tenancy-fees-individuals/)

[www.gov.uk/green-deal-energy-saving-measures](http://www.gov.uk/green-deal-energy-saving-measures)

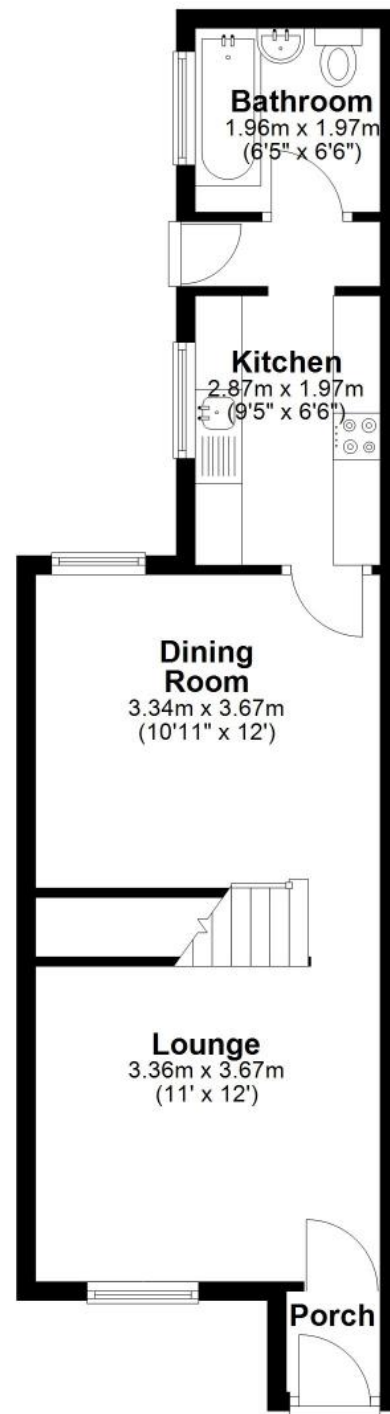
**Call Swale 01795 591916 ■ [wardsofkent.co.uk](http://wardsofkent.co.uk)**

IMPORTANT INFORMATION: Please contact our Lettings Team who will confirm the total costs involved in renting this property. For clarification, we wish to inform the prospective tenant that we have prepared these details as a general guide. The agent has not carried out a detailed survey nor tested the services, appliances, or specific fittings (unless otherwise stated), and no warranty can be given as to their condition. All room measurements are taken at floor level. We strongly recommend that all the information which we provide about the property is verified by yourself and your advisers. The contents of this publication are © Wards, 2015. Wards is a trading name of Arun Estates Limited Registered in England No. 2597969



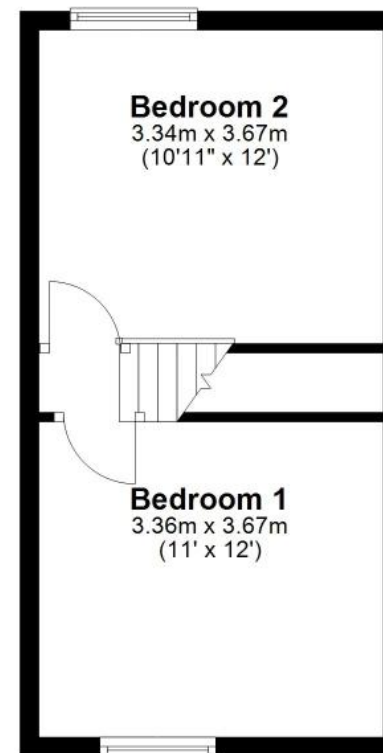
## Ground Floor

Approx. 40.3 sq. metres (433.6 sq. feet)



## First Floor

Approx. 27.6 sq. metres (297.6 sq. feet)



Total area: approx. 67.9 sq. metres (731.2 sq. feet)