



Price

£3,500 PCM

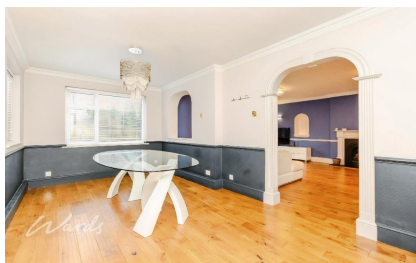
Fees Apply



Available 24/01/26

New Barn Road
Longfield DA3

Wards
Helping you move forwards



Main Features

- Impressive detached chalet bungalow
- Large driveway & detached garage
- Summer house with sauna & games room
- Loft offers extra storage space
- Two en-suite shower rooms
- Good transport links & schools nearby



Deposit required is £4,038.46
Dartford District - Council Tax Band Tax Band G

Renting a property is a big commitment and we recommend that you visit the local authority website and these websites which offer helpful information and advice about letting

www.gov.uk/government/publications/how-to-rent

www.gov.uk/private-renting

www.wardsofkent.co.uk/renting/tenancy-fees-individuals/

www.gov.uk/green-deal-energy-saving-measures

Call Dartford 01322 311291 ■ wardsofkent.co.uk

IMPORTANT INFORMATION: Please contact our Lettings Team who will confirm the total costs involved in renting this property. For clarification, we wish to inform the prospective tenant that we have prepared these details as a general guide. The agent has not carried out a detailed survey nor tested the services, appliances, or specific fittings (unless otherwise stated), and no warranty can be given as to their condition. All room measurements are taken at floor level. We strongly recommend that all the information which we provide about the property is verified by yourself and your advisers. The contents of this publication are © Wards, 2015. Wards is a trading name of Arun Estates Limited Registered in England No. 2597969

Accommodation

Porch 2.03m x 1.42m

Inner Hallway

Lounge 6.63m x 4.83m

Dining Room 5.67m x 2.85m

Kitchen/Diner 6.48m x 4.63m

Study 3.10m x 2.64m

Shower Room 2.92m x 1.96m

Bedroom 1 6.58m x 4.09m

Walk in Wardrobe 2.29m x 1.93m

En-suite Shower Room 1.68m x 1.40m

Bedroom 2 5.26m x 5.01m

Bedroom 3 3.63m x 3.51m

Bedroom 4 4.80m x 2.54m

En-suite Shower Room 1.78m x 1.14m

Bedroom 5 3.30m x 2.87m

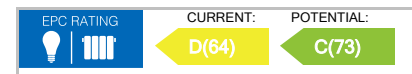
Bathroom 2.57m x 1.73m

Storage Room 4.02m x 2.52m

Gym 6.33m x 5.24m

Loft Room/Bedroom 6.38m x 2.82m

Summer House 5.39m x 4.88m



Ground Floor

Approx. 194.7 sq. metres (2095.5 sq. feet)



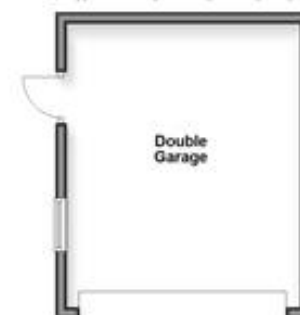
First Floor

Approx. 88.1 sq. metres (948.5 sq. feet)



Outbuilding

Approx. 23.4 sq. metres (251.7 sq. feet)



Outbuilding

Approx. 26.6 sq. metres (286.6 sq. feet)

