



Deposit  
Available

## Price

£1,400 PCM

Fees Apply



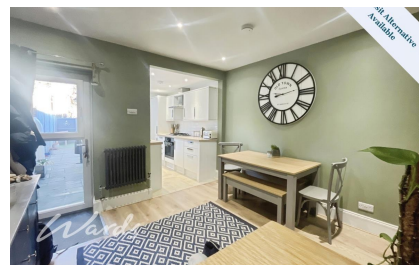
Available 02/02/26

Regent Street  
Whitstable CT5

Wards

Wards  
Helping you move forwards





## Main Features

- Beautifully presented and spacious two-bedroom terrace house
- Arranged over two storeys
- Two separate living areas offering flexible accommodation
- Contemporary fitted kitchen
- Convenient downstairs WC
- Two well-proportioned double bedrooms with built-in storage



Deposit required is £1,615.38  
Canterbury District - Council Tax Band N/A

Renting a property is a big commitment and we recommend that you visit the local authority website and these websites which offer helpful information and advice about letting

[www.gov.uk/government/publications/how-to-rent](http://www.gov.uk/government/publications/how-to-rent)

[www.gov.uk/private-renting](http://www.gov.uk/private-renting)

[www.wardsofkent.co.uk/letting/our-tenancy-fees/](http://www.wardsofkent.co.uk/letting/our-tenancy-fees/)

[www.gov.uk/green-deal-energy-saving-measures](http://www.gov.uk/green-deal-energy-saving-measures)

**Call Whitstable 01227 200691 ■ [wardsofkent.co.uk](http://wardsofkent.co.uk)**

IMPORTANT INFORMATION: Please note that administration fees are charged in addition to the rent and security deposit. Please contact our Lettings Team who will confirm the total costs involved in renting this property. For clarification, we wish to inform the prospective tenant that we have prepared these details as a general guide. The agent has not carried out a detailed survey nor tested the services, appliances, or specific fittings (unless otherwise stated), and no warranty can be given as to their condition. All room measurements are taken at floor level. We strongly recommend that all the information which we provide about the property is verified by yourself and your advisers. The contents of this publication are © Wards, 2015. Wards is a trading name of Arun Estates Limited Registered in England No. 2597969

## Accommodation

**Bedroom 1** 2.834 x 3.189

**Bedroom 2** 3.162 x 2.618

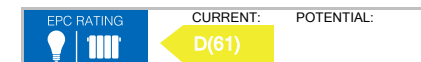
**Living Room** 3.08 x 3.45

**Dining Room** 3.25 x 3.441

**Kitchen** 1.970 x 4.468

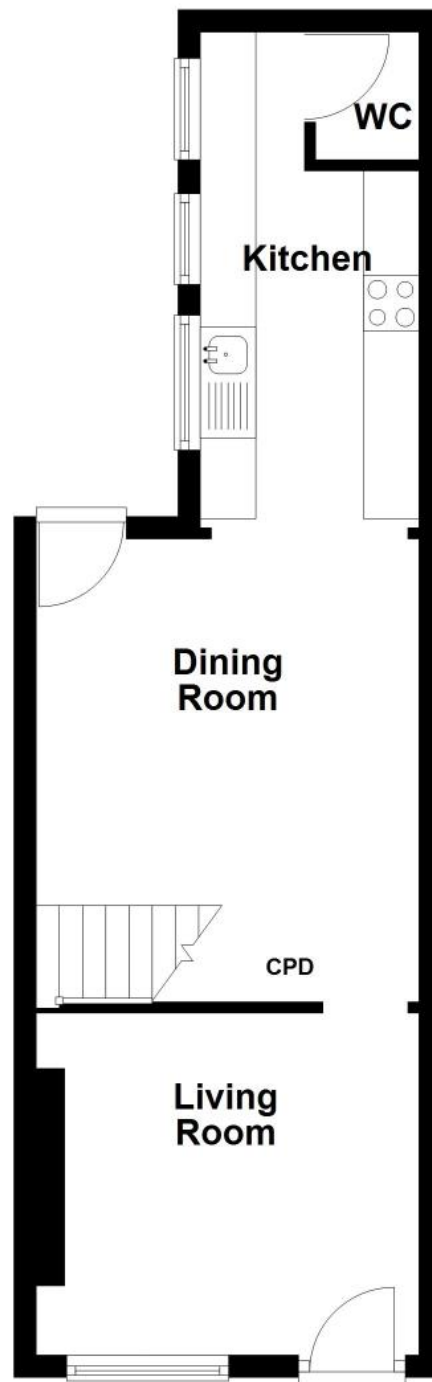
**Shower Room**

**WC**



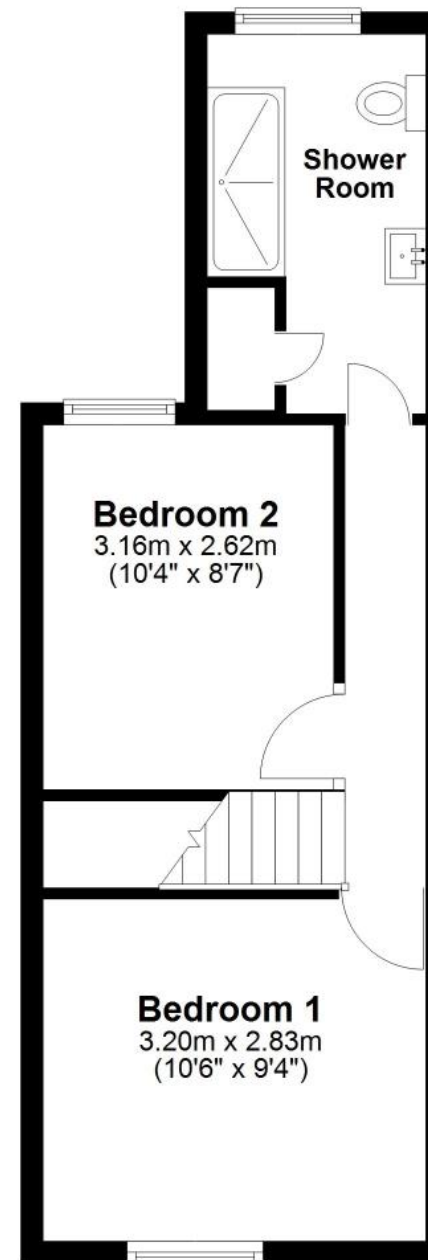
## Ground Floor

Approx. 34.4 sq. metres (369.9 sq. feet)



## First Floor

Approx. 30.4 sq. metres (327.3 sq. feet)



Total area: approx. 64.8 sq. metres (697.2 sq. feet)