



Price

£875 PCM

Fees Apply



Available 10/01/26

The Mall Brading PO36

**Pittis**  
Helping you move forwards



## Main Features

- Cottage
- Two Bedrooms
- Furnished Options
- Available Now
- Countryside Views
- Pet Considered



Deposit required is £1,009.62  
Isle of Wight - Council Tax Band Tax Band A

Renting a property is a big commitment and we recommend that you visit the local authority website and these websites which offer helpful information and advice about letting

[www.gov.uk/government/publications/how-to-rent](http://www.gov.uk/government/publications/how-to-rent)

[www.gov.uk/private-renting](http://www.gov.uk/private-renting)

[www.pittis.co.uk/renting/tenancy-fees-individuals/](http://www.pittis.co.uk/renting/tenancy-fees-individuals/)

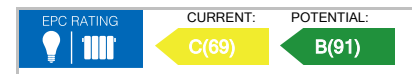
[www.gov.uk/green-deal-energy-saving-measures](http://www.gov.uk/green-deal-energy-saving-measures)

Call Ryde 01983 563785 ■ [pittis.co.uk](http://pittis.co.uk)

IMPORTANT INFORMATION: Please contact our Lettings Team who will confirm the total costs involved in renting this property. For clarification, we wish to inform the prospective tenant that we have prepared these details as a general guide. The agent has not carried out a detailed survey nor tested the services, appliances, or specific fittings (unless otherwise stated), and no warranty can be given as to their condition. All room measurements are taken at floor level. We strongly recommend that all the information which we provide about the property is verified by yourself and your advisers. The contents of this publication are © Pittis, 2015. Pittis is a trading name of Arun Estates Limited Registered in England No. 2597969

## Accommodation

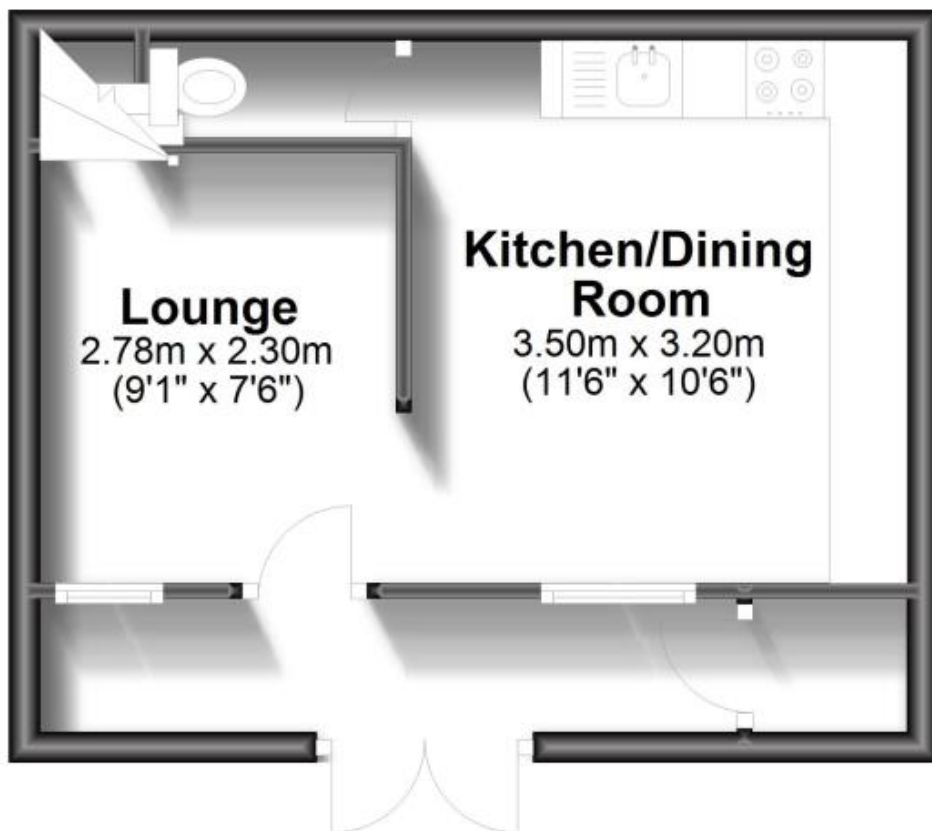
- Front Porch 0.87m x 4.5m
- Lounge 2.77m x 2.3m
- Kitchen/Diner 3.23m x 3.5m
- WC 1.59m x 0.74m
- Upstairs To Landing -
- Bedroom One 3.54m x 2.4m (max)
- En Suite Shower 1.5m x 0.87m
- Bedroom Two 2.29m x 2.7m
- Outside Patio/Parking





## Ground Floor

Approx. 25.0 sq. metres (268.8 sq. feet)



## First Floor

Approx. 20.1 sq. metres (216.1 sq. feet)

