

Visit Alternative
Available



Price

£3,000 PCM

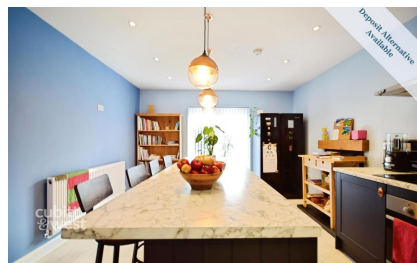
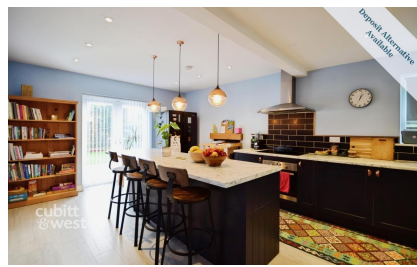
Fees Apply



Available 20/02/26

Parklands Avenue,
Bognor Regis, PO21

cubitt & west
Helping you move forwards



Main Features

Open House Event

Deposit Alternative Available

Detached Family Home

Four Double Bedrooms

Walk In Wardrobe & En-Suite To Master

Driveway Parking For Multiple Cars



Deposit required is £3,461.54
Arun District - Council Tax Band Tax Band E

Renting a property is a big commitment and we recommend that you visit the local authority website and these websites which offer helpful information and advice about letting

www.gov.uk/government/publications/how-to-rent

www.gov.uk/private-renting

www.cubittandwest.co.uk/renting/tenancy-fees-individuals/

www.gov.uk/green-deal-energy-saving-measures

Call Bognor Regis 01243 860290 ■ cubittandwest.co.uk

IMPORTANT INFORMATION: Please contact our Lettings Team who will confirm the total costs involved in renting this property. For clarification, we wish to inform the prospective tenant that we have prepared these details as a general guide. The agent has not carried out a detailed survey nor tested the services, appliances, or specific fittings (unless otherwise stated), and no warranty can be given as to their condition. All room measurements are taken at floor level. We strongly recommend that all the information which we provide about the property is verified by yourself and your advisers. The contents of this publication are © Cubitt & West, 2015. Cubitt & West is a trading name of Arun Estates Limited Registered in England No. 2597969

Accommodation

Kitchen 16.9 x 12.4

Lounge 24 x 14.4

Bedroom 4 11.7 x 9

En-Suite 6.3 x 5.2

Bedroom 1 15 x 12.5

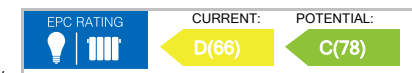
En-Suite 8.4 x 6.2

Closet 8.4 x 4

Bedroom 2 12.5 x 11.5

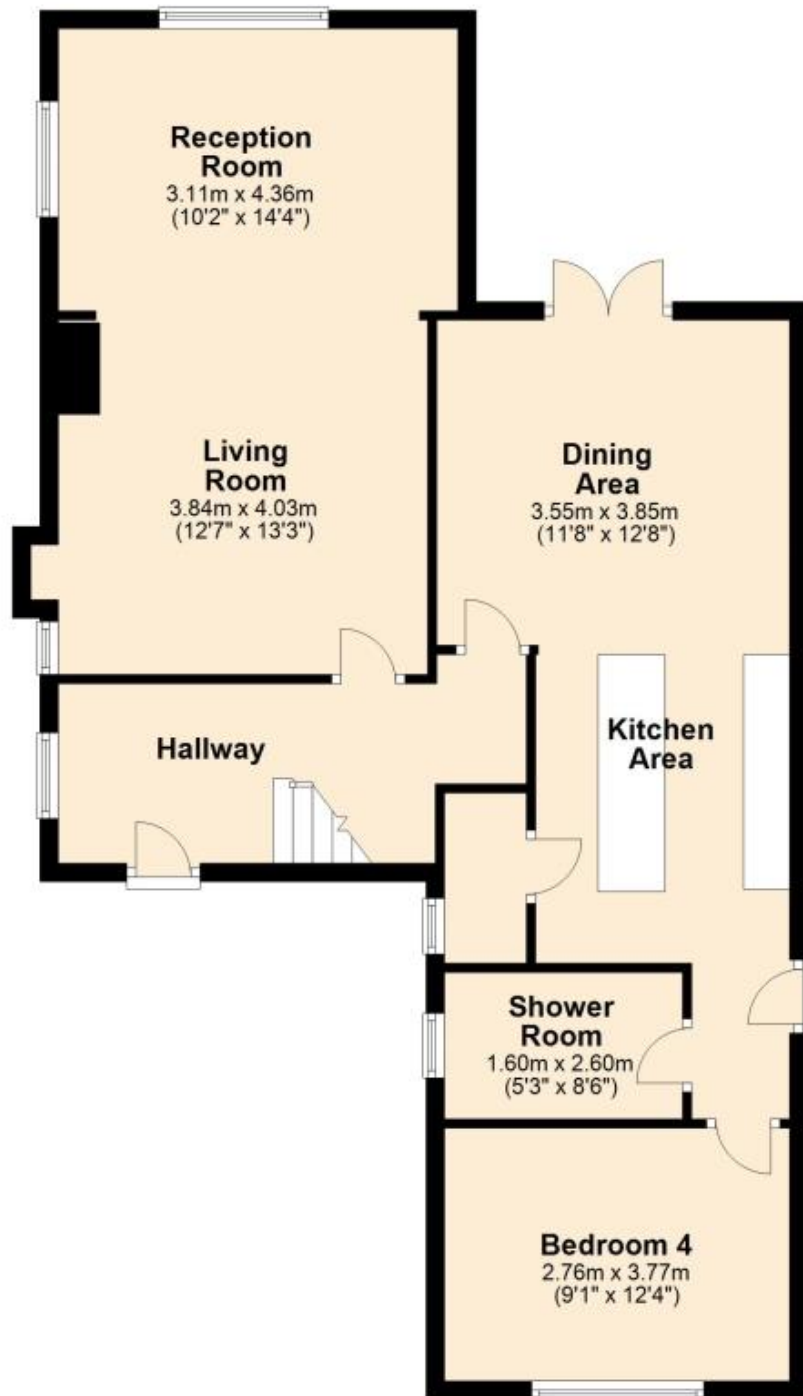
Bedroom 3 12.4 x 11.5

Bathroom 7.8 x 6.8



Ground Floor

Approx. 82.5 sq. metres (887.7 sq. feet)



First Floor

Approx. 65.8 sq. metres (708.0 sq. feet)



Total area: approx. 148.3 sq. metres (1595.8 sq. feet)