



Price

£3,500 PCM

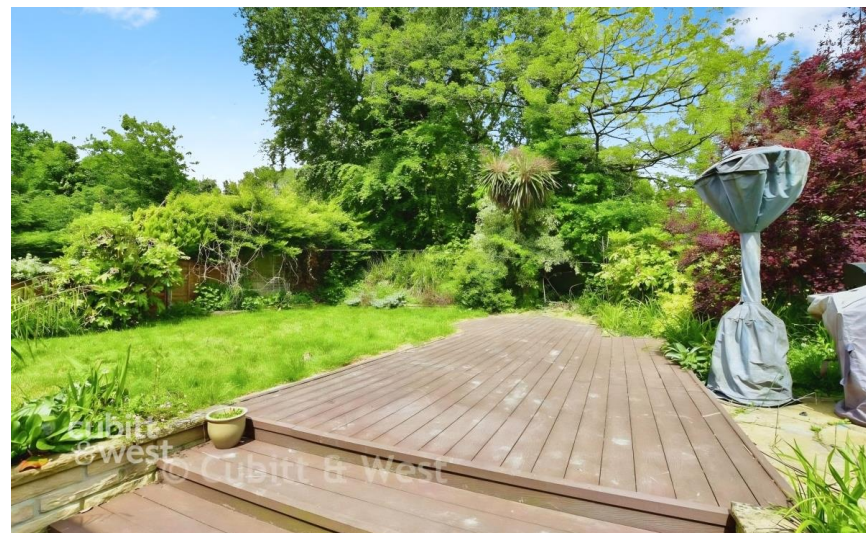
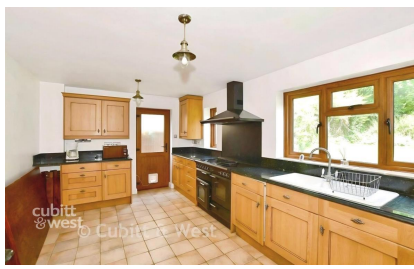
Fees Apply



Available 01/02/26

**Crawley Lane Crawley
RH10**

cubitt&west
Helping you move forwards



Main Features

Deposit Alternative Available

6 Bedrooms

Family Bathroom Plus 2 En Suite

Front, Side and Rear Gardens

Double Width Garage and Driveway

Available February



Deposit required is £4,038.46
Crawley District - Council Tax Band Tax Band F

Renting a property is a big commitment and we recommend that you visit the local authority website and these websites which offer helpful information and advice about letting

www.gov.uk/government/publications/how-to-rent

www.gov.uk/private-renting

www.cubittandwest.co.uk/renting/tenancy-fees-individuals/

www.gov.uk/green-deal-energy-saving-measures

Call Crawley 01293 544100 ■ cubittandwest.co.uk

IMPORTANT INFORMATION: Please contact our Lettings Team who will confirm the total costs involved in renting this property. For clarification, we wish to inform the prospective tenant that we have prepared these details as a general guide. The agent has not carried out a detailed survey nor tested the services, appliances, or specific fittings (unless otherwise stated), and no warranty can be given as to their condition. All room measurements are taken at floor level. We strongly recommend that all the information which we provide about the property is verified by yourself and your advisers. The contents of this publication are © Cubitt & West, 2015. Cubitt & West is a trading name of Arun Estates Limited Registered in England No. 2597969

Accommodation

Entrance Hall

Cloakroom

Lounge 5.46 x 3.86

Family Room 4.45 x 4.17

Dining Area 3.15 x 2.95

Kitchen/Breakfast Room 5.26 x 3.18

Landing

Bedroom 1 4.22 x 3.79

En Suite Shower Room

Bedroom 2 3.94 x 3.81

En Suite Shower Room

Bedroom 3 4.42 x 2.69

Bedroom 4 3.63 x 2.80 max

Bedroom 5 3.94 x 2.77 max

Bedroom 6 4.24 x 2.14 max

Bathroom

Front Garden

Side Garden

Rear Garden

Driveway



Ground Floor

Approx. 102.2 sq. metres (1099.9 sq. feet)



First Floor

Approx. 104.2 sq. metres (1121.1 sq. feet)

