

cubitt & west

Deposit Alternative Available



**Price**

**£1,900 PCM**

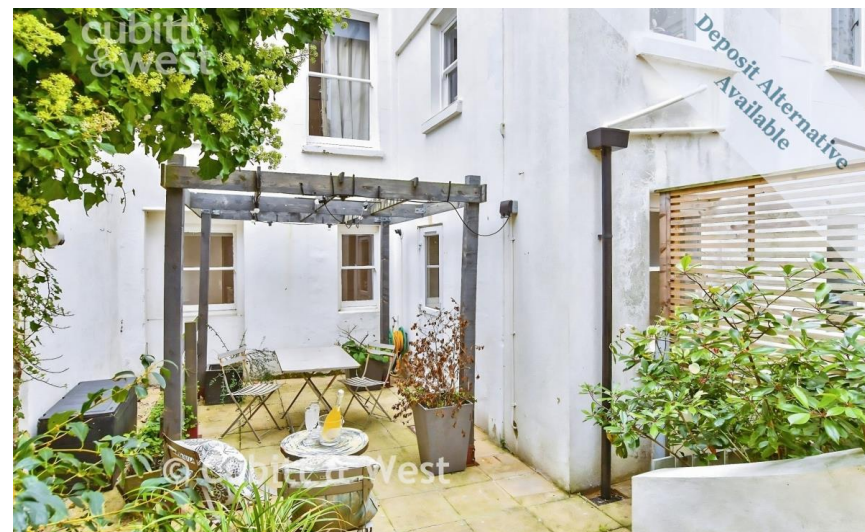
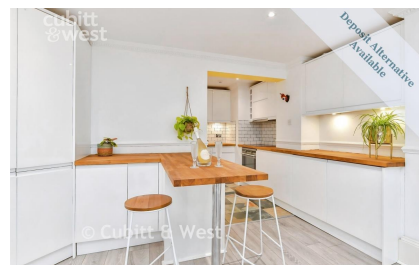
Fees Apply



Available 15/12/25

**DEPOSIT  
ALTERNATIVE  
AVAILABLE, Belvedere**

**cubitt & west**  
Helping you move forwards



## Main Features

Modern Open-Plan Living

Stylish Built-In Kitchen

Breakfast Bar

Versatile Home Office Area

Exceptionally Large Garden

Central Brighton Location

## Accommodation

Hallway

Open-Plan Living

Bedroom 1

Shower Room

Bedroom 2

Private Rear Garden



**Deposit required is £2,192.31**

**The City of Brighton and Hove - Council Tax Band Tax Band C**

Renting a property is a big commitment and we recommend that you visit the local authority website and these websites which offer helpful information and advice about letting

[www.gov.uk/government/publications/how-to-rent](http://www.gov.uk/government/publications/how-to-rent)

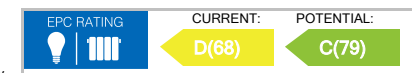
[www.gov.uk/private-renting](http://www.gov.uk/private-renting)

[www.cubittandwest.co.uk/renting/tenancy-fees-individuals/](http://www.cubittandwest.co.uk/renting/tenancy-fees-individuals/)

[www.gov.uk/green-deal-energy-saving-measures](http://www.gov.uk/green-deal-energy-saving-measures)

**Call Brighton 01273 747525 ■ [cubittandwest.co.uk](http://cubittandwest.co.uk)**

IMPORTANT INFORMATION: Please contact our Lettings Team who will confirm the total costs involved in renting this property. For clarification, we wish to inform the prospective tenant that we have prepared these details as a general guide. The agent has not carried out a detailed survey nor tested the services, appliances, or specific fittings (unless otherwise stated), and no warranty can be given as to their condition. All room measurements are taken at floor level. We strongly recommend that all the information which we provide about the property is verified by yourself and your advisers. The contents of this publication are © Cubitt & West, 2015. Cubitt & West is a trading name of Arun Estates Limited Registered in England No. 2597969



**Lower Ground Floor**  
Approx. 75.5 sq. metres (813.1 sq. feet)

