



Price

£1,700 PCM

Fees Apply



Available 17/01/26

Heron Gardens
Whitfield CT16

Wards
Helping you move forwards



Main Features

4 bedroom semi detached

New build

Available Mid January

Alternative deposit option available

Video tour available

Open house event



Deposit required is £1,961.54
- Council Tax Band Tax Band D

Renting a property is a big commitment and we recommend that you visit the local authority website and these websites which offer helpful information and advice about letting

www.gov.uk/government/publications/how-to-rent

www.gov.uk/private-renting

www.wardsofkent.co.uk/letting/our-tenancy-fees/

www.gov.uk/green-deal-energy-saving-measures

Call Dover 01304 201109 ■ wardsofkent.co.uk

IMPORTANT INFORMATION: Please note that administration fees are charged in addition to the rent and security deposit. Please contact our Lettings Team who will confirm the total costs involved in renting this property. For clarification, we wish to inform the prospective tenant that we have prepared these details as a general guide. The agent has not carried out a detailed survey nor tested the services, appliances, or specific fittings (unless otherwise stated), and no warranty can be given as to their condition. All room measurements are taken at floor level. We strongly recommend that all the information which we provide about the property is verified by yourself and your advisers. The contents of this publication are © Wards, 2015. Wards is a trading name of Arun Estates Limited Registered in England No. 2597969

Accommodation

GROUND FLOOR

Entrance Hall

Kitchen: 4.32m x 2.57m 14'2" x 8'5"

Open Plan Living: 2.80m x 4.55m 9'2" x 14'11"

Downstairs WC

FIRST FLOOR

Bedroom 2: 4.41m x 2.72m 14'6" x 8'11"

Bedroom 3: 3.79m x 2.57m 12'5" x 8'5"

Bedroom 4: 2.80m x 1.88m 9'2" x 6'2"

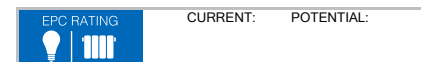
Bathroom

Landing

SECOND FLOOR

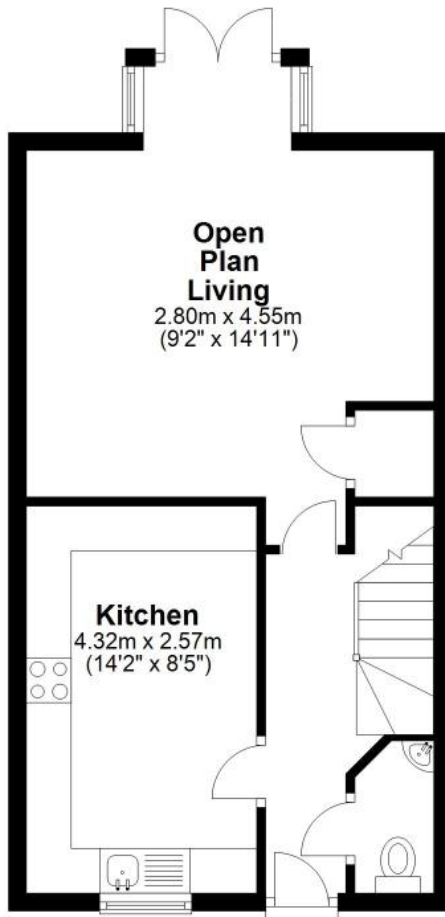
Bedroom 1: 8.29m x 3.32m 27'3" x 10'11"

En-suite



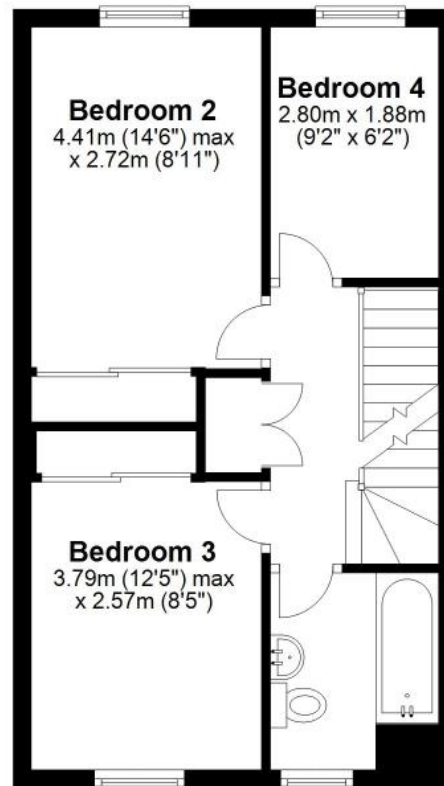
Ground Floor

Approx. 39.3 sq. metres (422.5 sq. feet)



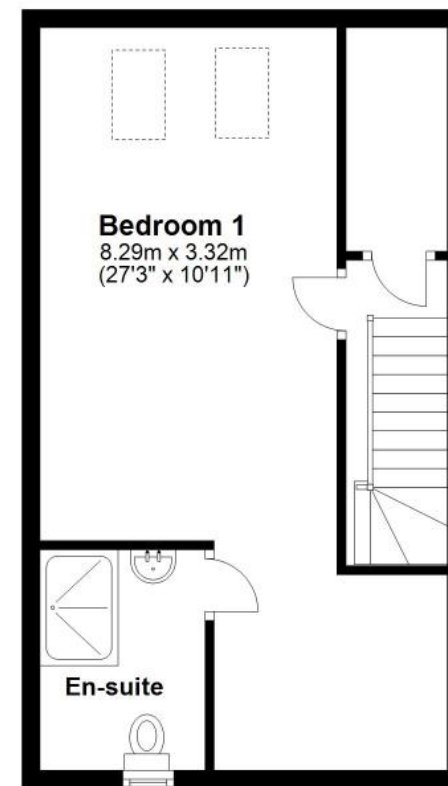
First Floor

Approx. 38.3 sq. metres (412.8 sq. feet)



Second Floor

Approx. 38.2 sq. metres (411.2 sq. feet)



Total area: approx. 115.8 sq. metres (1246.5 sq. feet)