



Price

£2,800 PCM

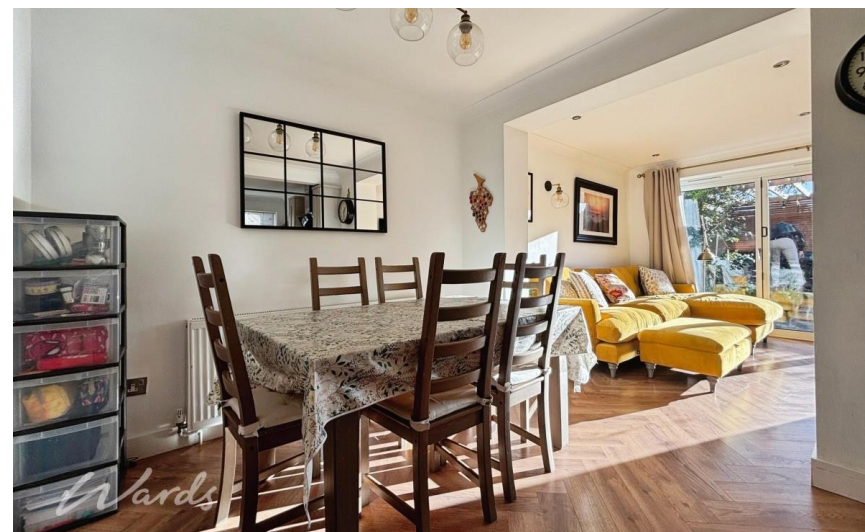
Fees Apply



Available 27/02/26

**Tilmans Mead
Farningham DA4**

Wards
Helping you move forwards



Main Features

Incredible link-detached family home

Driveway & garage

Presented beautifully throughout

Private garden

Utility area

Village location



Deposit required is £3,230.77
Sevenoaks District - Council Tax Band Tax Band E

Renting a property is a big commitment and we recommend that you visit the local authority website and these websites which offer helpful information and advice about letting

www.gov.uk/government/publications/how-to-rent

www.gov.uk/private-renting

www.wardsofkent.co.uk/renting/tenancy-fees-individuals/

www.gov.uk/green-deal-energy-saving-measures

Call Dartford 01322 311291 ■ wardsofkent.co.uk

IMPORTANT INFORMATION: Please contact our Lettings Team who will confirm the total costs involved in renting this property. For clarification, we wish to inform the prospective tenant that we have prepared these details as a general guide. The agent has not carried out a detailed survey nor tested the services, appliances, or specific fittings (unless otherwise stated), and no warranty can be given as to their condition. All room measurements are taken at floor level. We strongly recommend that all the information which we provide about the property is verified by yourself and your advisers. The contents of this publication are © Wards, 2015. Wards is a trading name of Arun Estates Limited Registered in England No. 2597969

Accommodation

Entrance Hallway

Lounge 3.42m x 4.56m

Kitchen/Dining Area 5.48m x 3.60m

Living Room 3.96m x 3.15m

Utility Area 1.81m x 2.56m

Cloakroom 0.83m x 1.70m

Bedroom 1 3.68m x 2.85m

En-suite Shower Room 1.95m x 1.57m

Bedroom 2 3.66m x 2.95m

Bedroom 5 2.90m x 1.79m

Bathroom 1.95m x 2.03m

Bedroom 3 2.78m x 3.19m

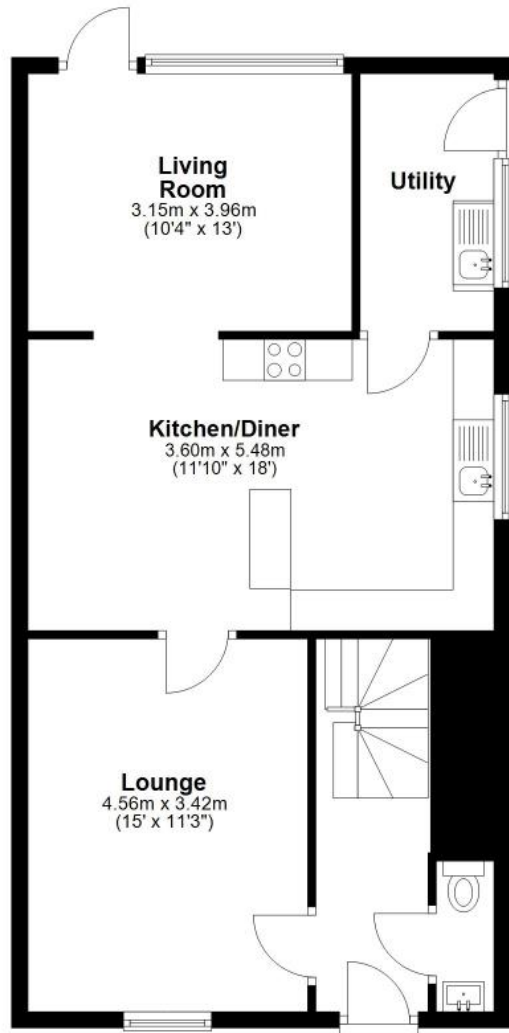
Bedroom 4 3.67m x 2.59m

Shower Room 1.55m x 1.60m



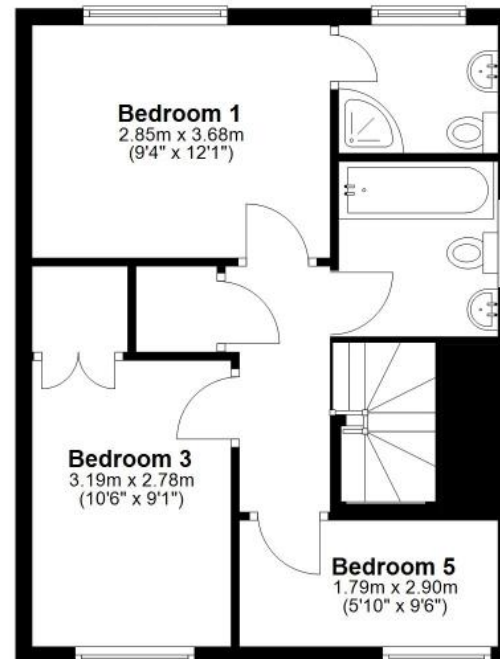
Ground Floor

Approx. 64.8 sq. metres (697.4 sq. feet)



First Floor

Approx. 40.8 sq. metres (439.0 sq. feet)



Second Floor

Approx. 26.3 sq. metres (282.6 sq. feet)



Total area: approx. 131.8 sq. metres (1419.0 sq. feet)