



Price

£1,700 PCM

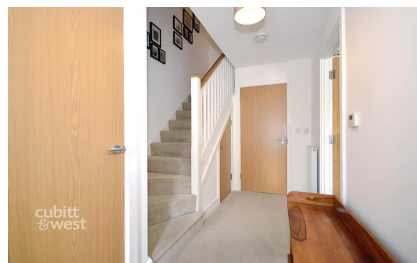
Fees Apply



Available 23/08/25

**North Mead Chichester
PO19**

cubitt&west
Helping you move forwards



Main Features

- Modern three bedroom home
- Contemporary styling
- Fabulous kitchen diner
- Super rear garden
- Two Allocated Parking Spaces
- Open House Event



Deposit required is £1,961.54
Chichester District - Council Tax Band Tax Band D

Renting a property is a big commitment and we recommend that you visit the local authority website and these websites which offer helpful information and advice about letting

www.gov.uk/government/publications/how-to-rent

www.gov.uk/private-renting

www.cubittandwest.co.uk/renting/tenancy-fees-individuals/

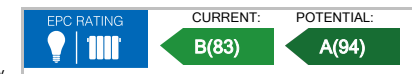
www.gov.uk/green-deal-energy-saving-measures

Call Chichester 01243 774772 ■ cubittandwest.co.uk

IMPORTANT INFORMATION: Please contact our Lettings Team who will confirm the total costs involved in renting this property. For clarification, we wish to inform the prospective tenant that we have prepared these details as a general guide. The agent has not carried out a detailed survey nor tested the services, appliances, or specific fittings (unless otherwise stated), and no warranty can be given as to their condition. All room measurements are taken at floor level. We strongly recommend that all the information which we provide about the property is verified by yourself and your advisers. The contents of this publication are © Cubitt & West, 2015. Cubitt & West is a trading name of Arun Estates Limited Registered in England No. 2597969

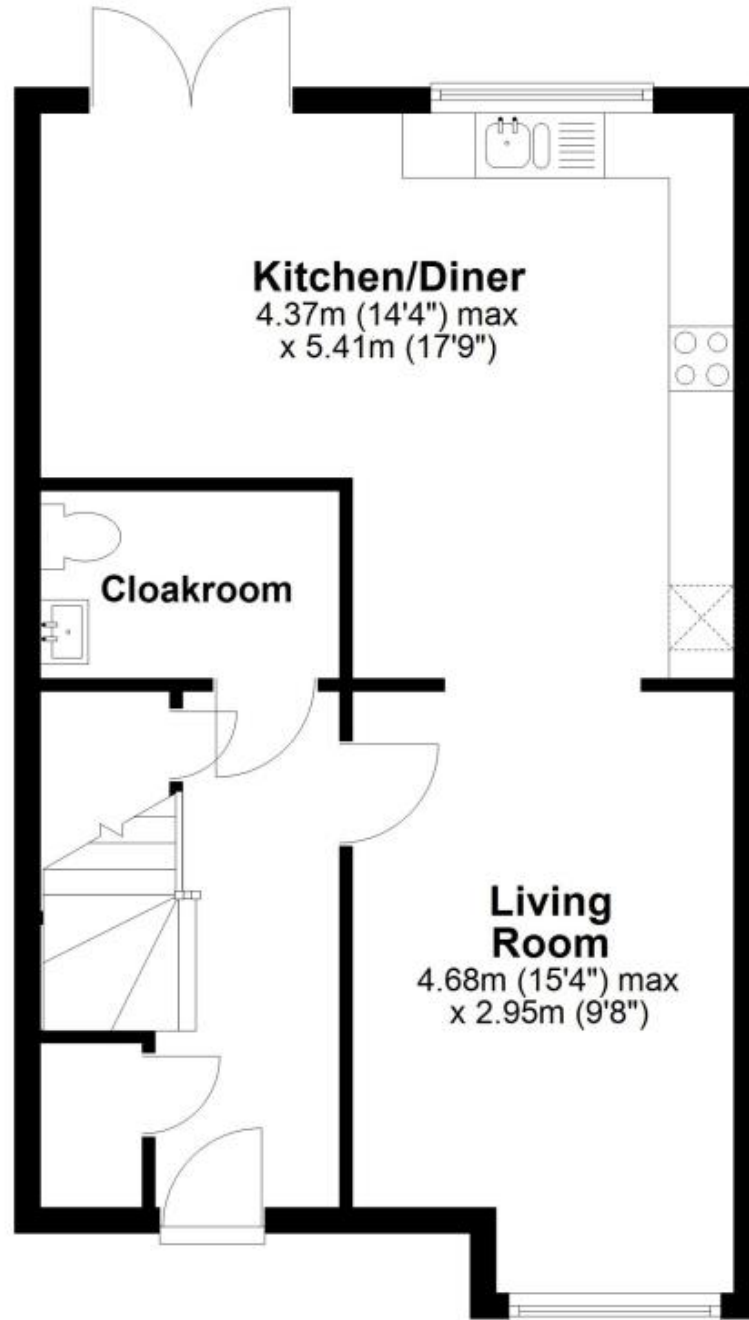
Accommodation

- Living Room 15'4 x 9'8
- Kitchen / Dining Room 17'9 x 14'4
- Cloakroom 6'6 x 4'6
- Bedroom 1 14'3 x 11'4
- En Suite 8'1 x 4'6
- Bedroom 2 10'6 x 8'8
- Bedroom 3 10'8 x 7'0
- Private Rear Garden
- Allocated Parking



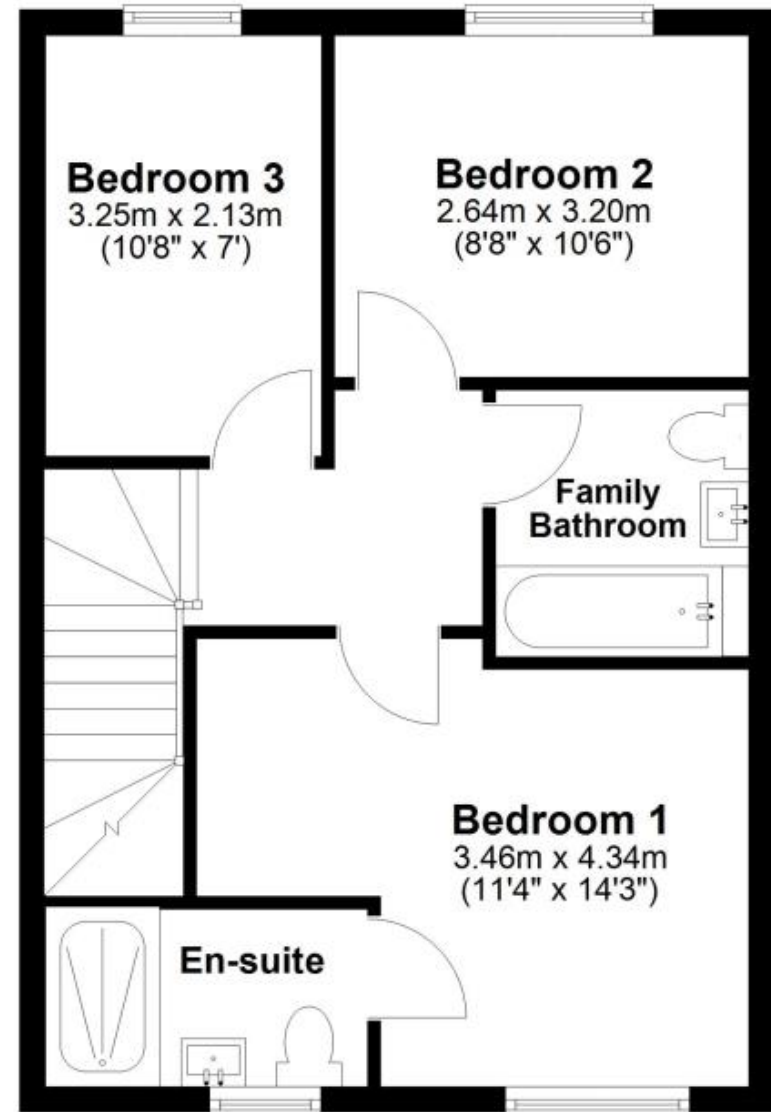
Ground Floor

Approx. 46.0 sq. metres (495.3 sq. feet)



First Floor

Approx. 45.0 sq. metres (484.7 sq. feet)



Total area: approx. 91.0 sq. metres (980.0 sq. feet)