



Price

£2,100 PCM

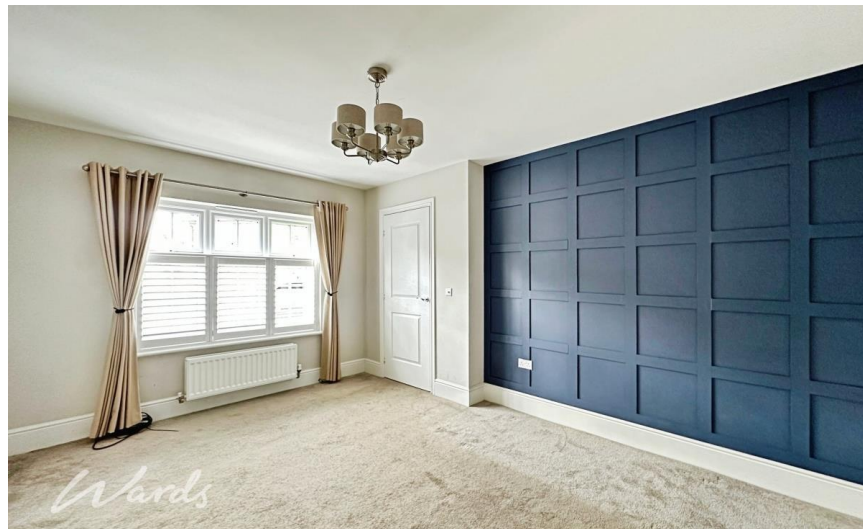
Fees Apply



Available 31/07/25

**Brick Gardens Ryarsh
ME19**

Wards
Helping you move forwards



Main Features

Four Bedroom Semi Detached House

Video Walk About Available

Immaculate Condition

En-suite & Cloakroom

Fully Equipped Kitchen

Large Brick Paved Driveway



Deposit required is £2,423.08
Tonbridge and Malling District - Council Tax Band Tax Band E

Renting a property is a big commitment and we recommend that you visit the local authority website and these websites which offer helpful information and advice about letting

www.gov.uk/government/publications/how-to-rent

www.gov.uk/private-renting

www.wardsofkent.co.uk/renting/tenancy-fees-individuals/

www.gov.uk/green-deal-energy-saving-measures

Call Maidstone 01622 675064 ■ wardsofkent.co.uk

IMPORTANT INFORMATION: Please contact our Lettings Team who will confirm the total costs involved in renting this property. For clarification, we wish to inform the prospective tenant that we have prepared these details as a general guide. The agent has not carried out a detailed survey nor tested the services, appliances, or specific fittings (unless otherwise stated), and no warranty can be given as to their condition. All room measurements are taken at floor level. We strongly recommend that all the information which we provide about the property is verified by yourself and your advisers. The contents of this publication are © Wards, 2015. Wards is a trading name of Arun Estates Limited Registered in England No. 2597969

Accommodation

Hallway

Living Room 4.70m x 3.50m

WC

Kitchen/Diner 5.64m x 3.50m

Stairs & 1st Landing

Bedroom 4 2.80m x 2.30m

Bedroom 2 4.68m x 3.46m

Bedroom 3 3.60m x 3.44m

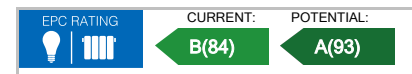
Family Bathroom 2.45m x 1.80m

Stairs & 2nd Landing

Bedroom 1 5.48m x 3.98m

En-suite

Garden



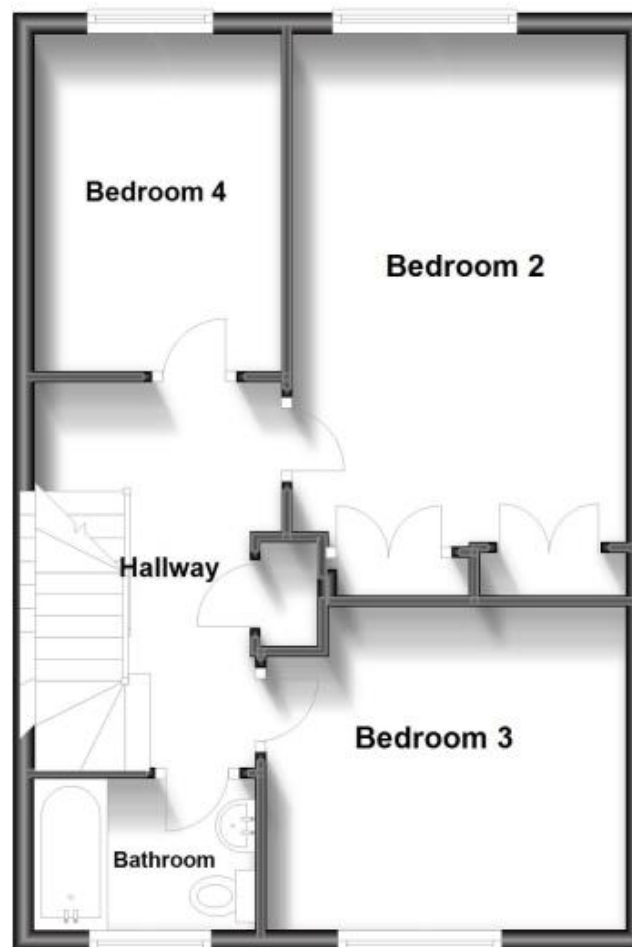
Ground Floor

Approx. 53.4 sq. metres (575.0 sq. feet)



First Floor

Approx. 44.9 sq. metres (483.8 sq. feet)



Second Floor

Approx. 27.4 sq. metres (294.9 sq. feet)

