



Price

£975 PCM

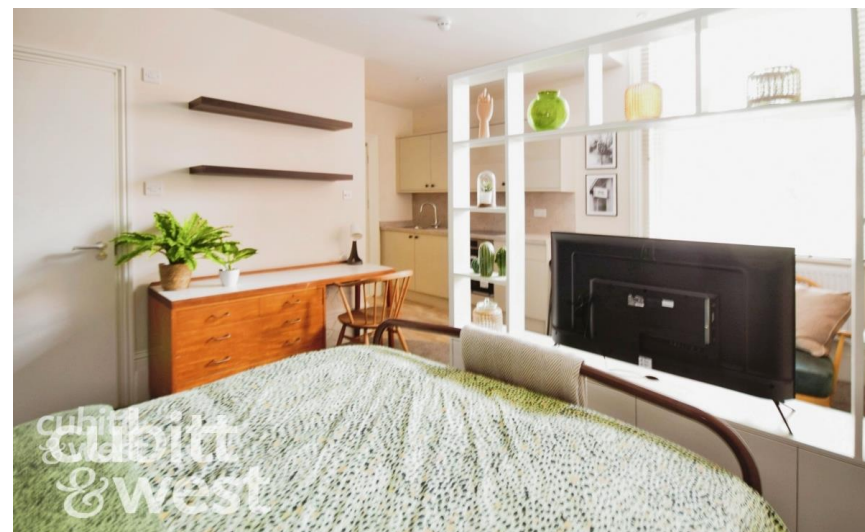
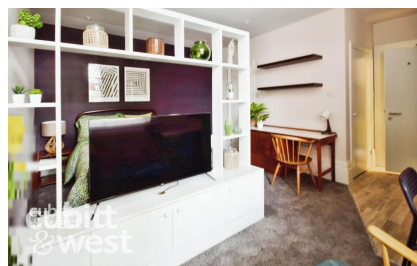
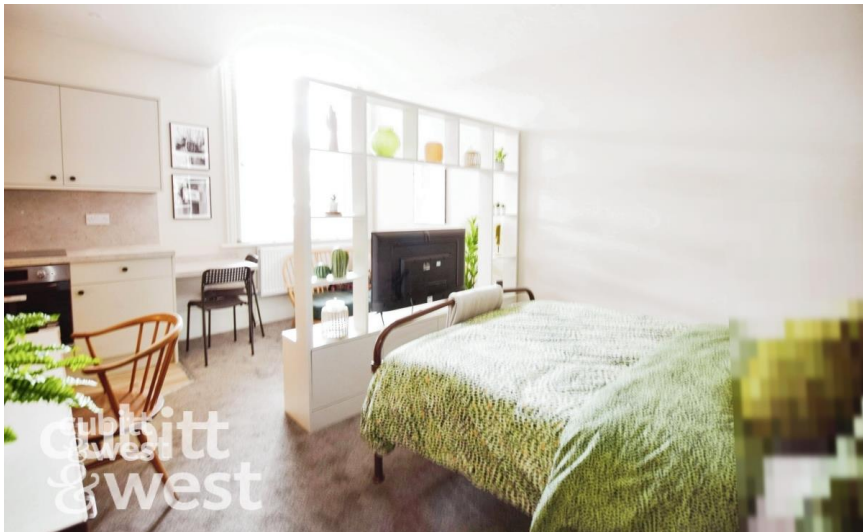
Fees Apply



Available 05/04/25

**Waverley Road
Southsea PO5**

cubitt & west
Helping you move forwards



Main Features

VIEWING A MUST

BILLS INCLUDED, Except For Council Tax

GREAT LOCATION

MODERN FINISH

Shared Laundry facilities

Transport Links Close By



Deposit required is £1,125.00

City of Portsmouth - Council Tax Band Tax Band A

Renting a property is a big commitment and we recommend that you visit the local authority website and these websites which offer helpful information and advice about letting

www.gov.uk/government/publications/how-to-rent

www.gov.uk/private-renting

www.cubittandwest.co.uk/renting/tenancy-fees-individuals/

www.gov.uk/green-deal-energy-saving-measures

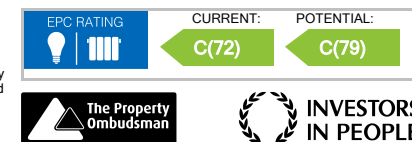
Call Portsmouth 023 92653157 ■ cubittandwest.co.uk

IMPORTANT INFORMATION: Please contact our Lettings Team who will confirm the total costs involved in renting this property. For clarification, we wish to inform the prospective tenant that we have prepared these details as a general guide. The agent has not carried out a detailed survey nor tested the services, appliances, or specific fittings (unless otherwise stated), and no warranty can be given as to their condition. All room measurements are taken at floor level. We strongly recommend that all the information which we provide about the property is verified by yourself and your advisers. The contents of this publication are © Cubitt & West, 2015. Cubitt & West is a trading name of Arun Estates Limited Registered in England No. 2597969

Accommodation

Living Area 15'10-15'9

En-Suite 7'10-3'8



Ground Floor
Approx. 102.9 sq. metres (1107.4 sq. feet)



First Floor
Approx. 86.4 sq. metres (929.7 sq. feet)



Second Floor
Approx. 70.2 sq. metres (755.3 sq. feet)



Total area: approx. 259.4 sq. metres (2792.4 sq. feet)