

Available with
no deposit



Price

£2,000 PCM

Fees Apply



Available 01/02/25

Honeysuckle Avenue
Willesborough TN24

Wards

Helping you move forwards



Available with no deposit



Available with no deposit



Available with no deposit



Available with no deposit

Main Features

- IMMACULATELY PRESENTED FAMILY HOME
- SPECTACULAR LOW MAINTENANCE REAR GARDEN
- WALKING DISTANCE TO WILLIAM HARVEY
- TANDEM CAR PORT TO SIDE
- KITCHEN/DINING ROOM
- COMMUTER LINKS & SCHOOL CATCHMENT



Deposit required is £2,307.69
Ashford District - Council Tax Band Tax Band E

Renting a property is a big commitment and we recommend that you visit the local authority website and these websites which offer helpful information and advice about letting

www.gov.uk/government/publications/how-to-rent

www.gov.uk/private-renting

www.wardsofkent.co.uk/renting/tenancy-fees-individuals/

www.gov.uk/green-deal-energy-saving-measures

Call Ashford 01233 639654 ■ wardsofkent.co.uk

IMPORTANT INFORMATION: Please contact our Lettings Team who will confirm the total costs involved in renting this property. For clarification, we wish to inform the prospective tenant that we have prepared these details as a general guide. The agent has not carried out a detailed survey nor tested the services, appliances, or specific fittings (unless otherwise stated), and no warranty can be given as to their condition. All room measurements are taken at floor level. We strongly recommend that all the information which we provide about the property is verified by yourself and your advisers. The contents of this publication are © Wards, 2015. Wards is a trading name of Arun Estates Limited Registered in England No. 2597969

Accommodation

- ENTRANCE HALL
- Living Room 5.30 x 4.51
- Kitchen/Dining Room 5.65 x 3.05
- Cloakroom
- Storage
- FIRST FLOOR
- Principle Bedroom 3.08 x 3.05
- En-Suite Shower Room
- Bedroom 2 3.31 x 3.06
- Family Bathroom

Bedroom 3 3.56 x 2.15

Bedroom 4 3.47 x 2.16

OUTSIDE

Landscaped Rear Garden

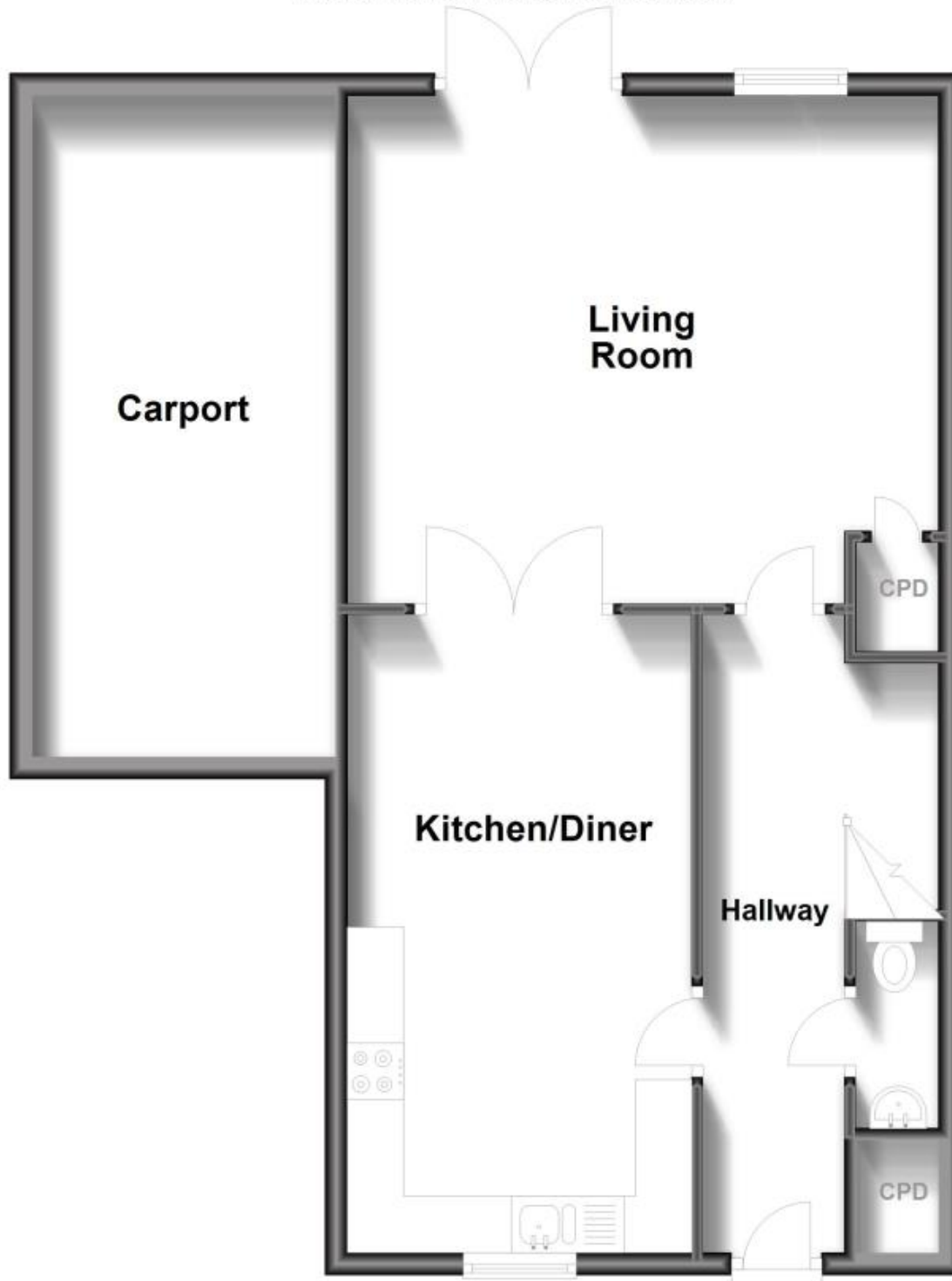
Front Garden

Car Port



Ground Floor

Approx. 70.1 sq. metres (754.1 sq. feet)



First Floor

Approx. 53.7 sq. metres (578.1 sq. feet)

