



Price

£1,350 PCM

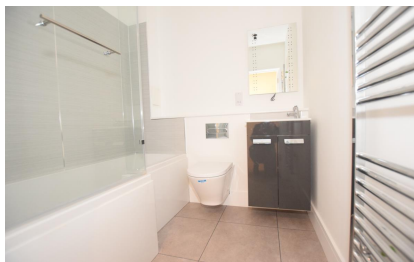
Fees Apply



Available 31/01/25

New Dover Road
Canterbury CT1

Wards
Helping you move forwards



Main Features

**** Open House Viewings Saturday****

Allocated parking

2 Double bedrooms

En-suite to master bedroom

Private garden

Full integrated appliances

Accommodation

Open Plan living 6.20 x 6.07

Bedroom 1 4.98 x 2.72

En-suite 1.28 x 2.34

Bedroom 2 3.35 x 3.78

Bathroom 1.95 x 1.99



Deposit required is £1,557.69

Canterbury District - Council Tax Band D

Renting a property is a big commitment and we recommend that you visit the local authority website and these websites which offer helpful information and advice about letting

www.gov.uk/government/publications/how-to-rent

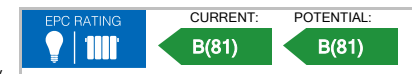
www.gov.uk/private-renting

www.wardsofkent.co.uk/renting/tenancy-fees-individuals/

www.gov.uk/green-deal-energy-saving-measures

Call Canterbury 01227 453793 ■ wardsofkent.co.uk

IMPORTANT INFORMATION: Please contact our Lettings Team who will confirm the total costs involved in renting this property. For clarification, we wish to inform the prospective tenant that we have prepared these details as a general guide. The agent has not carried out a detailed survey nor tested the services, appliances, or specific fittings (unless otherwise stated), and no warranty can be given as to their condition. All room measurements are taken at floor level. We strongly recommend that all the information which we provide about the property is verified by yourself and your advisers. The contents of this publication are © Wards, 2015. Wards is a trading name of Arun Estates Limited Registered in England No. 2597969



Lower Ground Floor

Approx. 77.3 sq. metres (831.9 sq. feet)



Total area: approx. 77.3 sq. metres (831.9 sq. feet)