



Price

£2,200 PCM

Fees Apply

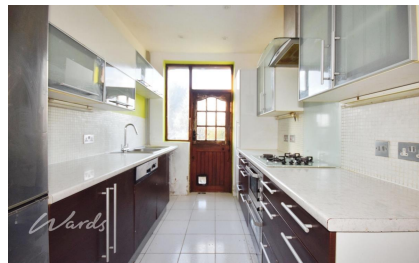


Available 07/12/24

Cleanthus Road
London SE18

Wards

Helping you move forwards



Main Features

Mid-terrace family home

Driveway

Large rear garden

Spacious lounge/diner

Great location for reputable schools

Available with no deposit



Deposit required is £2,538.46
Greenwich London - Council Tax Band Tax Band D

Renting a property is a big commitment and we recommend that you visit the local authority website and these websites which offer helpful information and advice about letting

www.gov.uk/government/publications/how-to-rent

www.gov.uk/private-renting

www.wardsofkent.co.uk/renting/tenancy-fees-individuals/

www.gov.uk/green-deal-energy-saving-measures

Call Dartford 01322 311291 ■ wardsofkent.co.uk

IMPORTANT INFORMATION: Please contact our Lettings Team who will confirm the total costs involved in renting this property. For clarification, we wish to inform the prospective tenant that we have prepared these details as a general guide. The agent has not carried out a detailed survey nor tested the services, appliances, or specific fittings (unless otherwise stated), and no warranty can be given as to their condition. All room measurements are taken at floor level. We strongly recommend that all the information which we provide about the property is verified by yourself and your advisers. The contents of this publication are © Wards, 2015. Wards is a trading name of Arun Estates Limited Registered in England No. 2597969

Accommodation

Entrance Hall

Lounge/Diner 8.17m x 3.63m

Kitchen 3.55m x 2.17m

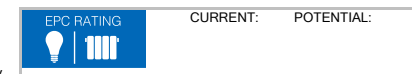
Landing

Bedroom 1 4.52m x 2.45m

Bedroom 2 3.53m x 3.04m

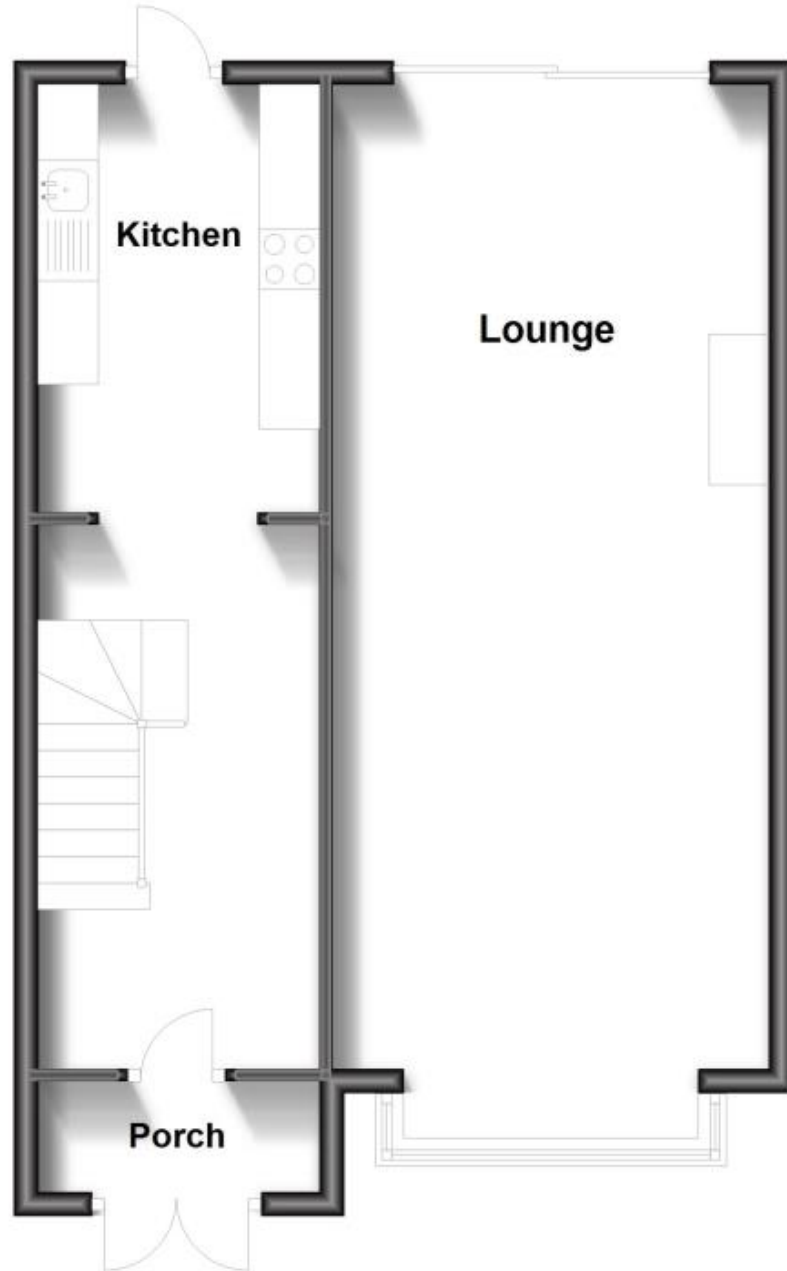
Bedroom 3 2.60m x 2.50m

Bathroom 2.45m x 2.11m



Ground Floor

Approx. 52.0 sq. metres (560.2 sq. feet)



First Floor

Approx. 46.7 sq. metres (502.3 sq. feet)

