



## Price

£2,300 PCM

Fees Apply



Available 31/12/24

Barrow Hill Close  
Holborough Lakes ME6

*Wards*

Helping you move forwards



## Main Features

Four Bedroom Family Home

Video Walk About Available

En Suite, Family Bathroom & Cloakroom

Carport & Driveway

Rear Garden

Kitchen Appliances



Deposit required is £2,653.85

Tonbridge and Malling District - Council Tax Band Tax Band E

Renting a property is a big commitment and we recommend that you visit the local authority website and these websites which offer helpful information and advice about letting

[www.gov.uk/government/publications/how-to-rent](http://www.gov.uk/government/publications/how-to-rent)

[www.gov.uk/private-renting](http://www.gov.uk/private-renting)

[www.wardsofkent.co.uk/renting/tenancy-fees-individuals/](http://www.wardsofkent.co.uk/renting/tenancy-fees-individuals/)

[www.gov.uk/green-deal-energy-saving-measures](http://www.gov.uk/green-deal-energy-saving-measures)

Call Maidstone 01622 675064 ■ [wardsofkent.co.uk](http://wardsofkent.co.uk)

IMPORTANT INFORMATION: Please contact our Lettings Team who will confirm the total costs involved in renting this property. For clarification, we wish to inform the prospective tenant that we have prepared these details as a general guide. The agent has not carried out a detailed survey nor tested the services, appliances, or specific fittings (unless otherwise stated), and no warranty can be given as to their condition. All room measurements are taken at floor level. We strongly recommend that all the information which we provide about the property is verified by yourself and your advisers. The contents of this publication are © Wards, 2015. Wards is a trading name of Arun Estates Limited Registered in England No. 2597969

## Accommodation

Entrance Hallway

Cloakroom

Kitchen/Diner 4.91x2.44

Living Room 4.88x3.08

First Floor & Landing

Bedroom 1 4.58x3.36

En Suite Shower Room

Bedroom 2 3.97x2.77

Bedroom 3 3.97x2.47

Bedroom 4 2.69x2.14

Bathroom

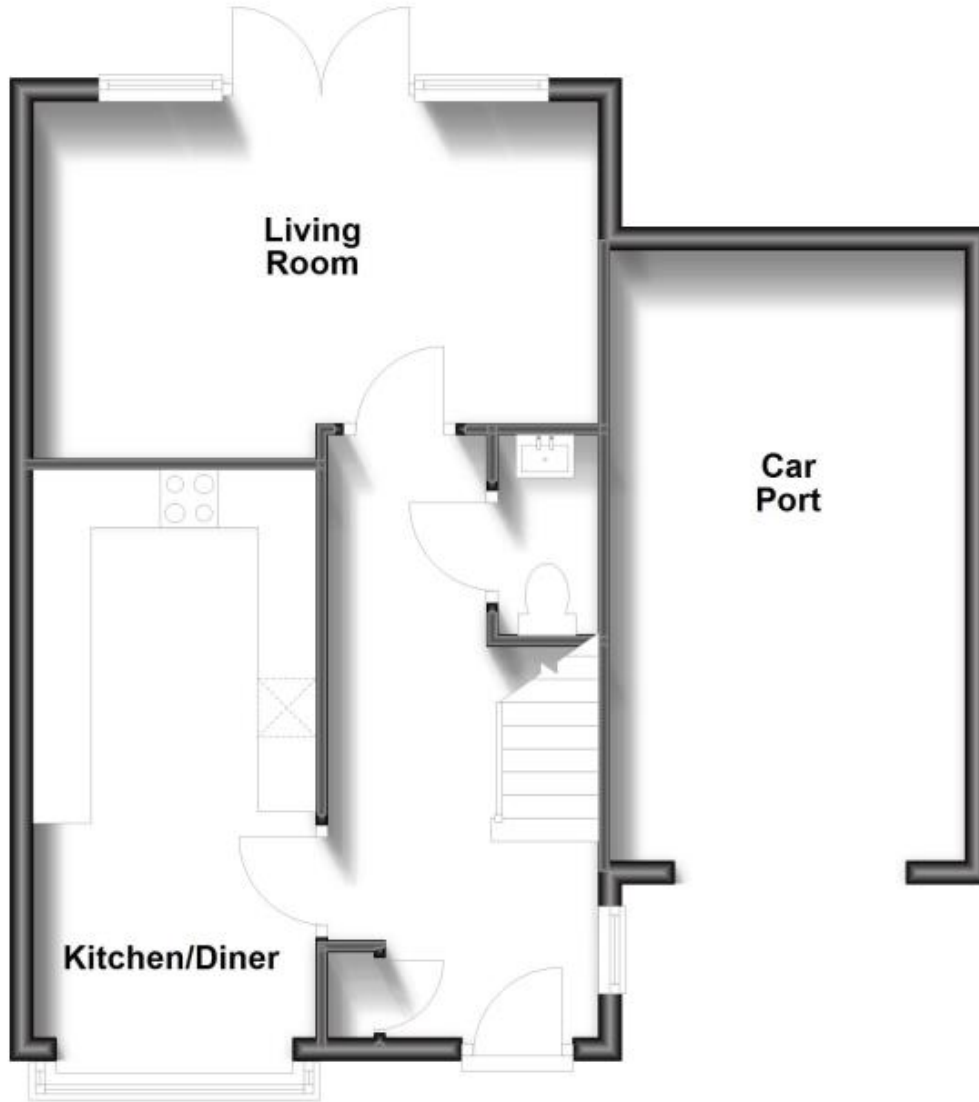
Carport & Driveway

Garden



## Ground Floor

Approx. 56.9 sq. metres (612.0 sq. feet)



## First Floor

Approx. 57.4 sq. metres (617.4 sq. feet)

