



Pittis

Price

£850 PCM

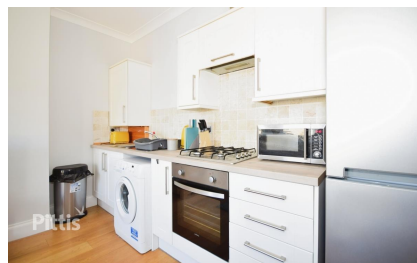
Fees Apply



Available 14/12/24

Avenue Road Sandown  
PO36

**Pittis**  
Helping you move forwards



## Main Features

- Fully Furnished
- Available Now
- Two Beds
- Deposit Options
- Central Location
- Modern Throughout

## Accommodation

### Hallway

**Open Plan Living Area** 3.35m x 4.7m

**Bedroom One** 4.13m x 3.5m (max)

**En Suite Shower Room** 1.7m x 1.5m (Max)

**Bedroom Two** 2m x 3.7m



**Deposit required is £980.77**  
**Isle of Wight - Council Tax Band Tax Band A**

Renting a property is a big commitment and we recommend that you visit the local authority website and these websites which offer helpful information and advice about letting

[www.gov.uk/government/publications/how-to-rent](http://www.gov.uk/government/publications/how-to-rent)

[www.gov.uk/private-renting](http://www.gov.uk/private-renting)

[www.pittis.co.uk/renting/tenancy-fees-individuals/](http://www.pittis.co.uk/renting/tenancy-fees-individuals/)

[www.gov.uk/green-deal-energy-saving-measures](http://www.gov.uk/green-deal-energy-saving-measures)

**Call Ryde 01983 563785** ■ [pittis.co.uk](http://pittis.co.uk)

IMPORTANT INFORMATION: Please contact our Lettings Team who will confirm the total costs involved in renting this property. For clarification, we wish to inform the prospective tenant that we have prepared these details as a general guide. The agent has not carried out a detailed survey nor tested the services, appliances, or specific fittings (unless otherwise stated), and no warranty can be given as to their condition. All room measurements are taken at floor level. We strongly recommend that all the information which we provide about the property is verified by yourself and your advisers. The contents of this publication are © Pittis, 2015. Pittis is a trading name of Arun Estates Limited Registered in England No. 2597969





# First Floor

