



## Price

£1,400 PCM

Fees Apply

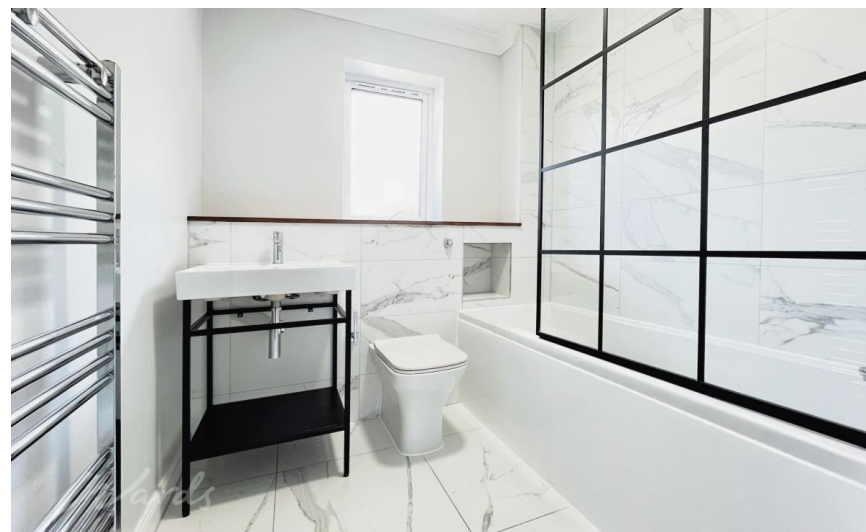


Available 15/01/25

The Acorns Smarden  
TN27

*Wards*

Helping you move forwards



## Main Features

Three Bedroom Home

Video Walk About Available

No Deposit Option Available

Immaculately presented

Private Garden

Driveway



Deposit required is £1,615.38  
Ashford District - Council Tax Band Tax Band D

Renting a property is a big commitment and we recommend that you visit the local authority website and these websites which offer helpful information and advice about letting

[www.gov.uk/government/publications/how-to-rent](http://www.gov.uk/government/publications/how-to-rent)

[www.gov.uk/private-renting](http://www.gov.uk/private-renting)

[www.wardsofkent.co.uk/renting/tenancy-fees-individuals/](http://www.wardsofkent.co.uk/renting/tenancy-fees-individuals/)

[www.gov.uk/green-deal-energy-saving-measures](http://www.gov.uk/green-deal-energy-saving-measures)

Call Maidstone 01622 675064 ■ [wardsofkent.co.uk](http://wardsofkent.co.uk)

IMPORTANT INFORMATION: Please contact our Lettings Team who will confirm the total costs involved in renting this property. For clarification, we wish to inform the prospective tenant that we have prepared these details as a general guide. The agent has not carried out a detailed survey nor tested the services, appliances, or specific fittings (unless otherwise stated), and no warranty can be given as to their condition. All room measurements are taken at floor level. We strongly recommend that all the information which we provide about the property is verified by yourself and your advisers. The contents of this publication are © Wards, 2015. Wards is a trading name of Arun Estates Limited Registered in England No. 2597969

## Accommodation

Entrance Hallway 0.96 x 3.99

Downstairs WC 1.49 x 0.76m

Living Area 4.58m x 3.10m

Kitchen/diner 5.01m x 3.07m

Stairs & Landing 2.62m x 1.08m

Family Bathroom 2.68m x 2.03m

Bedroom 1 3.90m x 2.89m

Bedroom 2 3.97m x 2.77m

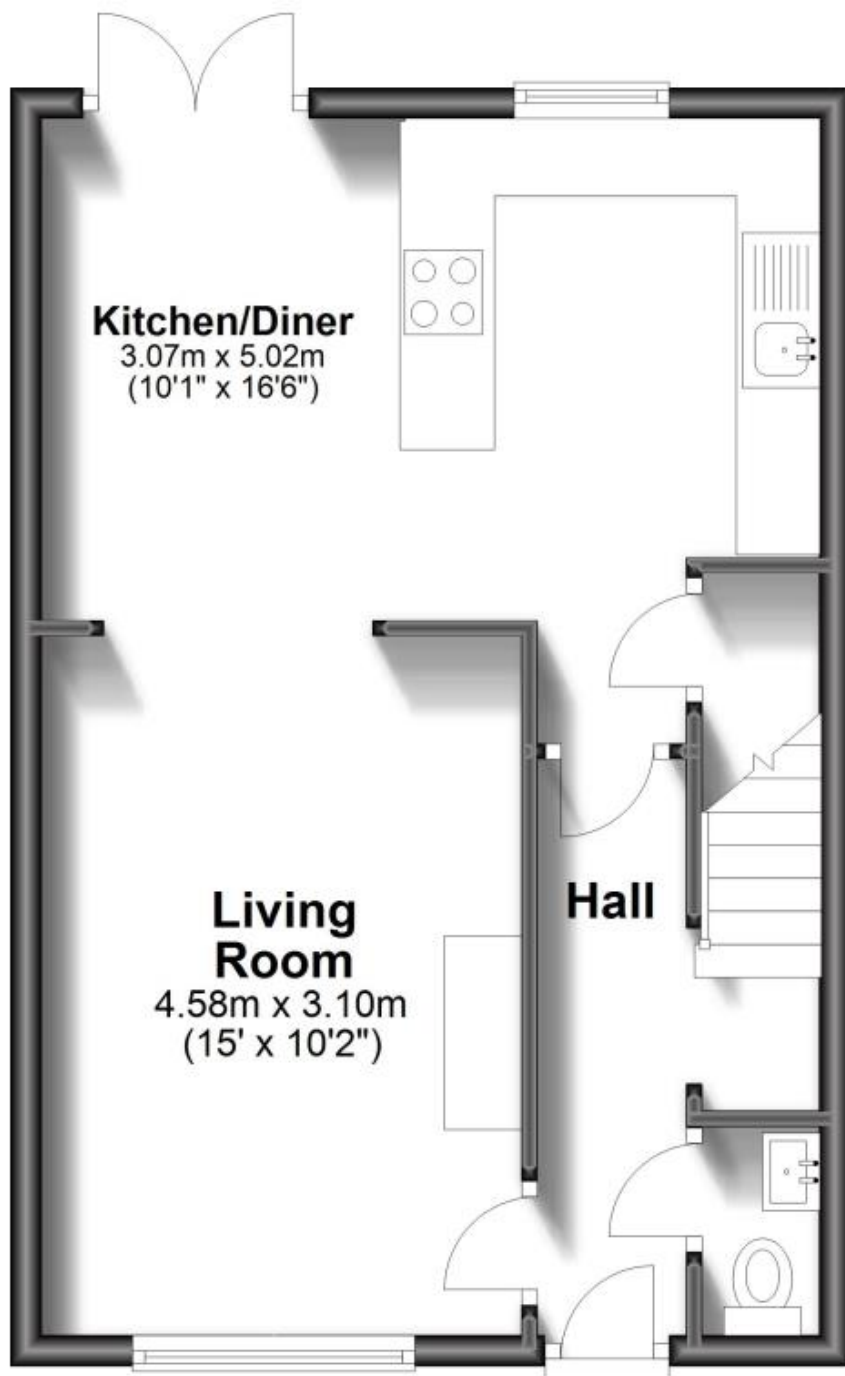
Bedroom 3 2.47m x 2.19

Garden



## Ground Floor

Approx. 41.0 sq. metres (440.9 sq. feet)



## First Floor

Approx. 38.8 sq. metres (417.3 sq. feet)

