



Price

£2,200 PCM

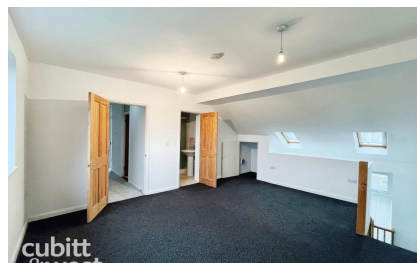
Fees Apply



Available 07/01/25

Barn Close Emsworth
PO10

cubitt&west
Helping you move forwards



Main Features

- Five Bedrooms
- Two Reception Rooms
- Large Enclosed Garden
- Fantastic Location
- Driveway
- Currently Undergoing Refurbishment



Deposit required is £2,538.46
Havant District - Council Tax Band N/A

Renting a property is a big commitment and we recommend that you visit the local authority website and these websites which offer helpful information and advice about letting

www.gov.uk/government/publications/how-to-rent

www.gov.uk/private-renting

www.cubittandwest.co.uk/renting/tenancy-fees-individuals/

www.gov.uk/green-deal-energy-saving-measures

Call Portsmouth 023 92653157 ■ cubittandwest.co.uk

IMPORTANT INFORMATION: Please contact our Lettings Team who will confirm the total costs involved in renting this property. For clarification, we wish to inform the prospective tenant that we have prepared these details as a general guide. The agent has not carried out a detailed survey nor tested the services, appliances, or specific fittings (unless otherwise stated), and no warranty can be given as to their condition. All room measurements are taken at floor level. We strongly recommend that all the information which we provide about the property is verified by yourself and your advisers. The contents of this publication are © Cubitt & West, 2015. Cubitt & West is a trading name of Arun Estates Limited Registered in England No. 2597969

Accommodation

- Hallway
- Kitchen 3.97m x 2.69m
- Lounge 6.10m x 3.63m
- Dining Room 4.02m x 3.15m
- Sitting Room 6.13m x 3.18m
- Cloakroom
- Landing
- Bedroom 1 3.97m x 3.43m
- En-Suite Bathroom
- Bedroom 2 3.63m x 2.87m

- Bedroom 3 3.13m x 3.05m
- Bedroom 4 2.44m x 2.21m
- Bedroom 5 5.03m x 4.27m
- Shower Room



Ground Floor

Approx. 81.9 sq. metres (881.3 sq. feet)



First Floor

Approx. 85.1 sq. metres (915.5 sq. feet)

