



 DOUGLAS  
ALLEN

**Price**

**£1,800 PCM**

Fees Apply



Available 09/11/24

**Taunton Close Ilford  
IG6**



**DOUGLAS  
ALLEN**

Helping you move forwards



## Main Features

- Mid-terrace family home
- Recently refurbished & modernised throughout
- Spacious lounge/dining room
- Brand new kitchen & bathroom
- Two double bedrooms
- Ideally located for transport links



Deposit required is £2,076.92  
Redbridge London - Council Tax Band Tax Band D

Renting a property is a big commitment and we recommend that you visit the local authority website and these websites which offer helpful information and advice about letting

[www.gov.uk/government/publications/how-to-rent](http://www.gov.uk/government/publications/how-to-rent)

[www.gov.uk/private-renting](http://www.gov.uk/private-renting)

[www.douglasallen.co.uk/renting/tenancy-fees-individuals/](http://www.douglasallen.co.uk/renting/tenancy-fees-individuals/)

[www.gov.uk/green-deal-energy-saving-measures](http://www.gov.uk/green-deal-energy-saving-measures)

Call Basildon 01268 525421 ■ [douglasallen.co.uk](http://douglasallen.co.uk)

IMPORTANT INFORMATION: Please contact our Lettings Team who will confirm the total costs involved in renting this property. For clarification, we wish to inform the prospective tenant that we have prepared these details as a general guide. The agent has not carried out a detailed survey nor tested the services, appliances, or specific fittings (unless otherwise stated), and no warranty can be given as to their condition. All room measurements are taken at floor level. We strongly recommend that all the information which we provide about the property is verified by yourself and your advisers. The contents of this publication are © Dougl's Allen, 2015. Dougl's Allen is a trading name of Arun Estates Limited Registered in England No. 2597969

## Accommodation

### Entrance Hall

Lounge 4.55m x 3.68m

Kitchen 2.87m x 1.80m

Bedroom 1 2.80m x 3.69m

Bedroom 2 2.63m x 3.66m

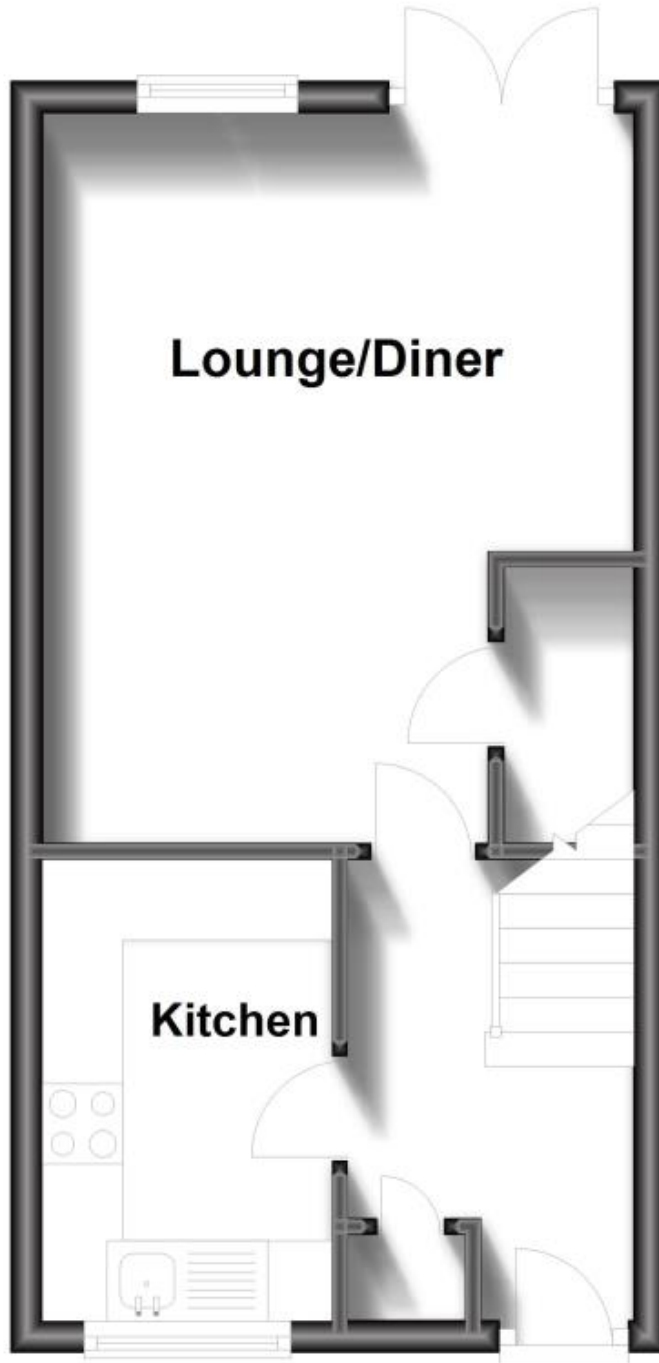
### Bathroom





## Ground Floor

Approx. 31.5 sq. metres (338.6 sq. feet)



## First Floor

Approx. 31.2 sq. metres (335.9 sq. feet)

