



## Price

**£1,750 PCM**

Fees Apply



Available 26/10/24

**Chiltern Close,  
Crawley, RH11**

**cubitt&west**  
Helping you move forwards





## Main Features

- Off Road Parking
- Downstairs Cloakroom
- Low Maintenance Garden
- Centrally Located
- Multi-Use Hallway
- Available ASAP



**Deposit required is £2,019.23**  
**Crawley District - Council Tax Band Tax Band C**

Renting a property is a big commitment and we recommend that you visit the local authority website and these websites which offer helpful information and advice about letting

[www.gov.uk/government/publications/how-to-rent](http://www.gov.uk/government/publications/how-to-rent)

[www.gov.uk/private-renting](http://www.gov.uk/private-renting)

[www.cubittandwest.co.uk/renting/tenancy-fees-individuals/](http://www.cubittandwest.co.uk/renting/tenancy-fees-individuals/)

[www.gov.uk/green-deal-energy-saving-measures](http://www.gov.uk/green-deal-energy-saving-measures)

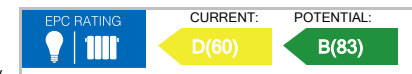
**Call Crawley 01293 544100 ■ [cubittandwest.co.uk](http://cubittandwest.co.uk)**

IMPORTANT INFORMATION: Please contact our Lettings Team who will confirm the total costs involved in renting this property. For clarification, we wish to inform the prospective tenant that we have prepared these details as a general guide. The agent has not carried out a detailed survey nor tested the services, appliances, or specific fittings (unless otherwise stated), and no warranty can be given as to their condition. All room measurements are taken at floor level. We strongly recommend that all the information which we provide about the property is verified by yourself and your advisers. The contents of this publication are © Cubitt & West, 2015. Cubitt & West is a trading name of Arun Estates Limited Registered in England No. 2597969

## Accommodation

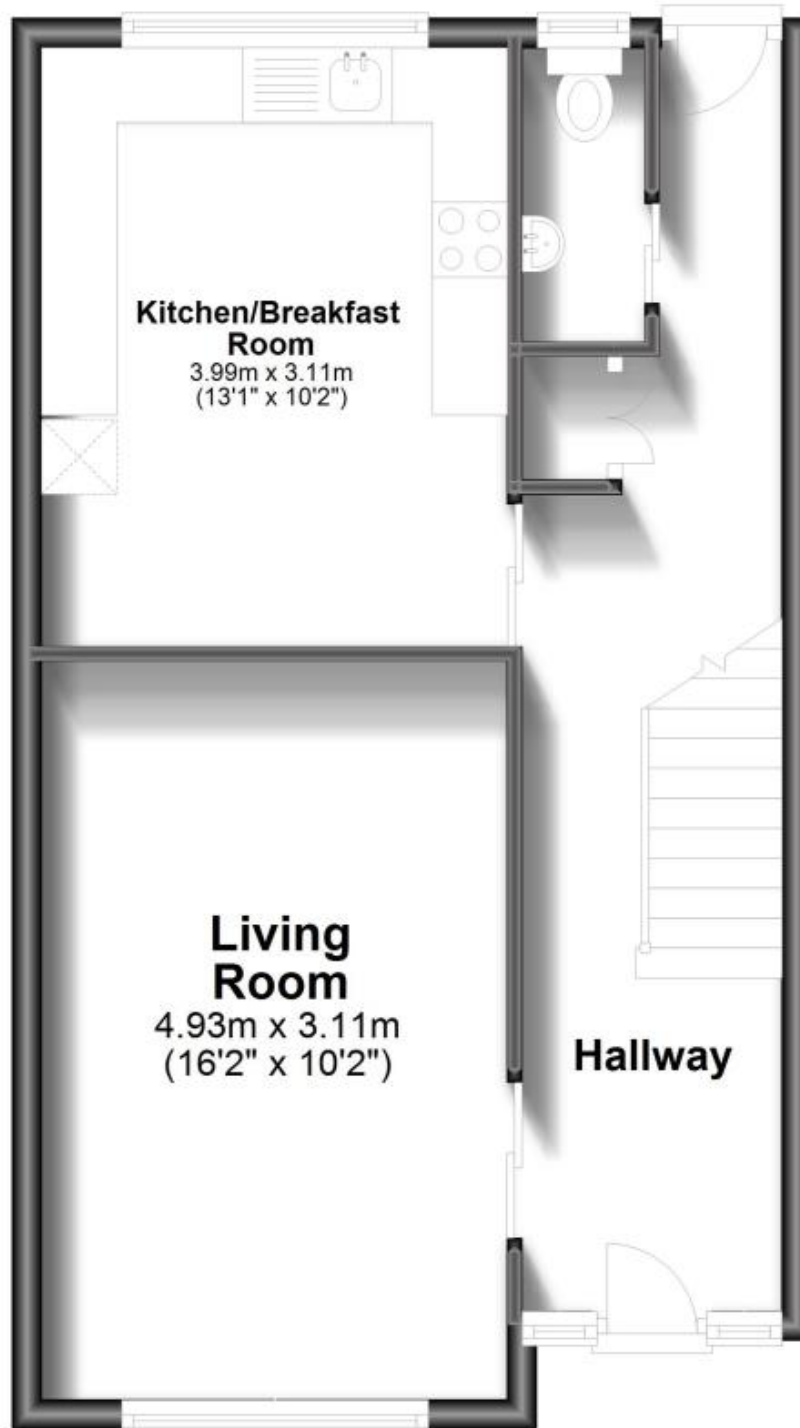
Hallway  
 Living Room  
 Kitchen  
 Cloakroom  
 Landing  
 Bedroom 1  
 Bathroom  
 Bedroom 2  
 Bedroom 3  
 Parking

Garden



## Ground Floor

Approx. 43.5 sq. metres (468.3 sq. feet)



## First Floor

Approx. 44.6 sq. metres (480.0 sq. feet)

