



Pittis

Price

£875 PCM

Fees Apply



Available 26/10/24

The Mall Brading PO36

Pittis
Helping you move forwards



Main Features

- **Cottage**
- **Two Bedrooms**
- **Furnished**
- **Available Now**
- **Countryside Views**
- **Pet Considered**



Deposit required is £1,009.62
Isle of Wight - Council Tax Band Tax Band A

Renting a property is a big commitment and we recommend that you visit the local authority website and these websites which offer helpful information and advice about letting

www.gov.uk/government/publications/how-to-rent

www.gov.uk/private-renting

www.pittis.co.uk/renting/tenancy-fees-individuals/

www.gov.uk/green-deal-energy-saving-measures

Call Ryde 01983 563785 ■ pittis.co.uk

IMPORTANT INFORMATION: Please contact our Lettings Team who will confirm the total costs involved in renting this property. For clarification, we wish to inform the prospective tenant that we have prepared these details as a general guide. The agent has not carried out a detailed survey nor tested the services, appliances, or specific fittings (unless otherwise stated), and no warranty can be given as to their condition. All room measurements are taken at floor level. We strongly recommend that all the information which we provide about the property is verified by yourself and your advisers. The contents of this publication are © Pittis, 2015. Pittis is a trading name of Arun Estates Limited Registered in England No. 2597969

Accommodation

Front Porch 0.87m x 4.5m

Lounge 2.77m x 2.3m

Kitchen/Diner 3.23m x 3.5m

WC 1.59m x 0.74m

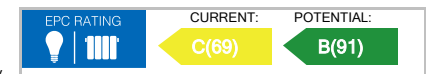
Upstairs To Landing-

Bedroom One 3.54m x 2.4m (max)

En Suite Shower 1.5m x 0.87m

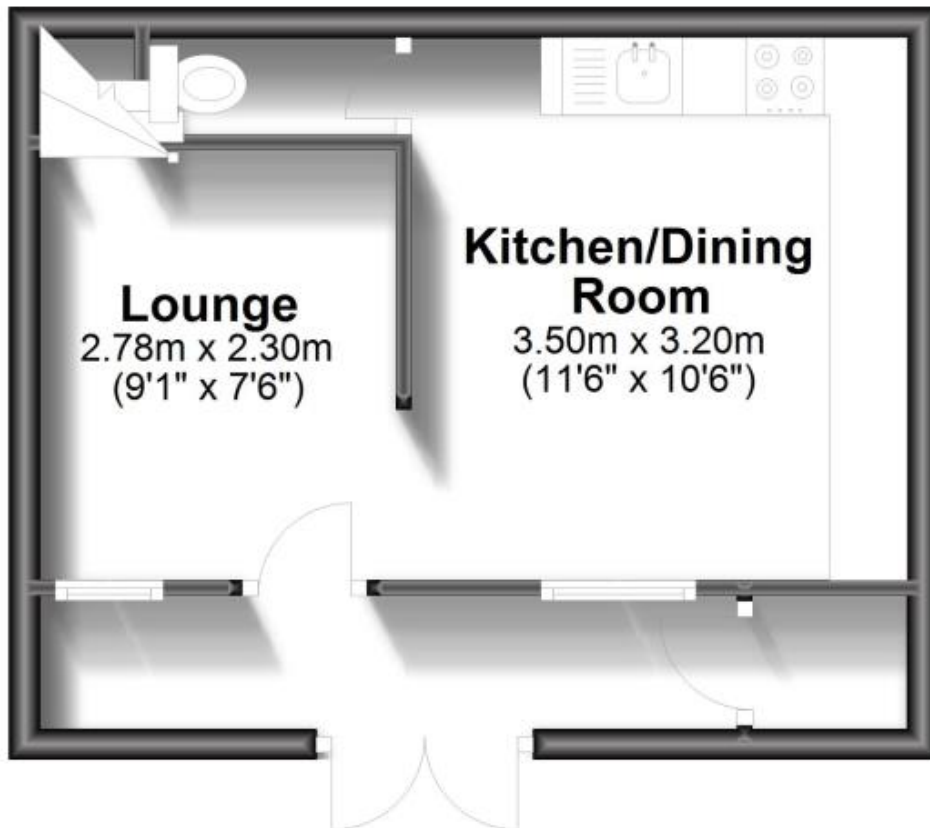
Bedroom Two 2.29m x 2.7m

Outside Patio/Parking



Ground Floor

Approx. 25.0 sq. metres (268.8 sq. feet)



First Floor

Approx. 20.1 sq. metres (216.1 sq. feet)

