



## Price

£2,200 PCM

Fees Apply



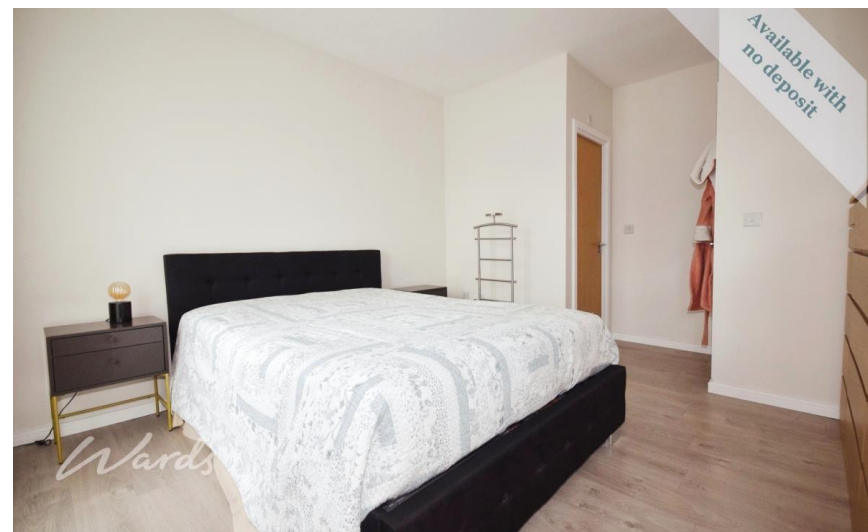
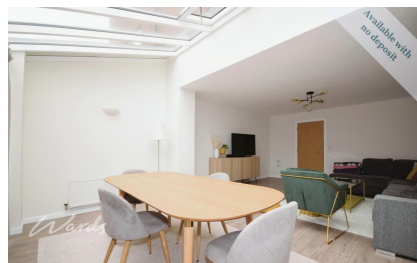
Available 30/10/24

Springhead Parkway  
Gravesend DA11

*Wards*

Helping you move forwards





## Main Features

- Beautiful mid-terrace town house
- Bathroom, en suite & cloakroom
- Garage en-bloc
- Allocated parking space for one car
- Large Lounge/Dining area
- Close distance to Ebbsfleet International



Deposit required is £2,538.46  
- Council Tax Band Tax Band D

Renting a property is a big commitment and we recommend that you visit the local authority website and these websites which offer helpful information and advice about letting

[www.gov.uk/government/publications/how-to-rent](http://www.gov.uk/government/publications/how-to-rent)

[www.gov.uk/private-renting](http://www.gov.uk/private-renting)

[www.wardsofkent.co.uk/renting/tenancy-fees-individuals/](http://www.wardsofkent.co.uk/renting/tenancy-fees-individuals/)

[www.gov.uk/green-deal-energy-saving-measures](http://www.gov.uk/green-deal-energy-saving-measures)

Call Dartford 01322 311291 ■ [wardsofkent.co.uk](http://wardsofkent.co.uk)

IMPORTANT INFORMATION: Please contact our Lettings Team who will confirm the total costs involved in renting this property. For clarification, we wish to inform the prospective tenant that we have prepared these details as a general guide. The agent has not carried out a detailed survey nor tested the services, appliances, or specific fittings (unless otherwise stated), and no warranty can be given as to their condition. All room measurements are taken at floor level. We strongly recommend that all the information which we provide about the property is verified by yourself and your advisers. The contents of this publication are © Wards, 2015. Wards is a trading name of Arun Estates Limited Registered in England No. 2597969

## Accommodation

Entrance Hall

Lounge 4.63m x 2.21m

Dining Area 4.63m x 2.21m

Kitchen 4.02m x 2.21m

Cloakroom

Landing

Bedroom 3 4.35m x 2.31m

Bedroom 4 4.60m x 3.13m

Bathroom

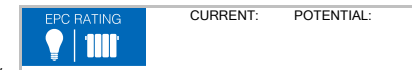
Landing

Bedroom 1 4.63m x 3.53m

En-Suite Shower Room

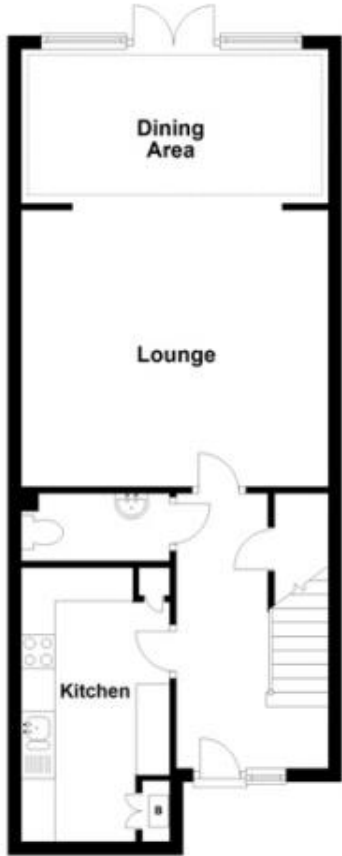
Balcony

Bedroom 2 4.65m x 2.26m



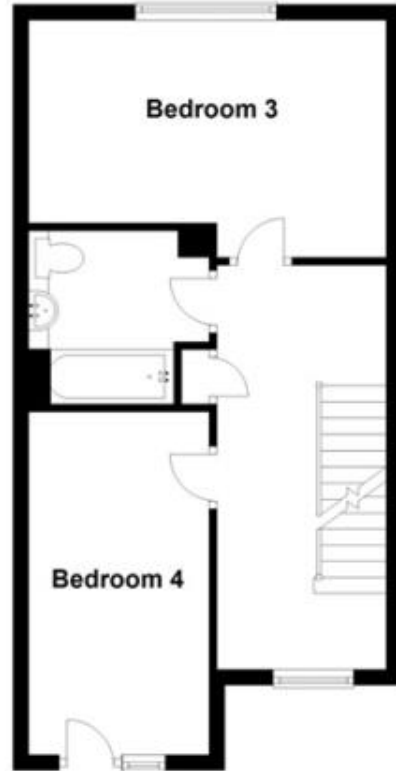
### Ground Floor

Approx. 51.4 sq. metres (553.8 sq. feet)



### First Floor

Approx. 40.6 sq. metres (436.6 sq. feet)



### Second Floor

Approx. 37.8 sq. metres (406.5 sq. feet)

