



## Price

£1,300 PCM

Fees Apply



Available 07/09/24

Railway Street  
Northfleet Gravesend  
DA11 9DU

*Wards*

Helping you move forwards



## Main Features

- Mid-terrace family home
- Two reception rooms
- Refurbished & modernised throughout
- Ideal location for Ebbsfleet International
- No through road
- Available with no deposit



Deposit required is £1,500.00  
Gravesham District - Council Tax Band Tax Band B

Renting a property is a big commitment and we recommend that you visit the local authority website and these websites which offer helpful information and advice about letting

[www.gov.uk/government/publications/how-to-rent](http://www.gov.uk/government/publications/how-to-rent)

[www.gov.uk/private-renting](http://www.gov.uk/private-renting)

[www.wardsofkent.co.uk/renting/tenancy-fees-individuals/](http://www.wardsofkent.co.uk/renting/tenancy-fees-individuals/)

[www.gov.uk/green-deal-energy-saving-measures](http://www.gov.uk/green-deal-energy-saving-measures)

Call Dartford 01322 311291 ■ [wardsofkent.co.uk](http://wardsofkent.co.uk)

IMPORTANT INFORMATION: Please contact our Lettings Team who will confirm the total costs involved in renting this property. For clarification, we wish to inform the prospective tenant that we have prepared these details as a general guide. The agent has not carried out a detailed survey nor tested the services, appliances, or specific fittings (unless otherwise stated), and no warranty can be given as to their condition. All room measurements are taken at floor level. We strongly recommend that all the information which we provide about the property is verified by yourself and your advisers. The contents of this publication are © Wards, 2015. Wards is a trading name of Arun Estates Limited Registered in England No. 2597969

## Accommodation

Lounge 2.95m x 3.44m

Garden

Dining room 2.87m x 3.38m

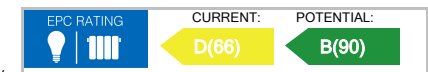
Kitchen 2.75m x 1.89m

Bedroom 1 2.97m x 3.40m

Bedroom 2 2.88m x 3.37m

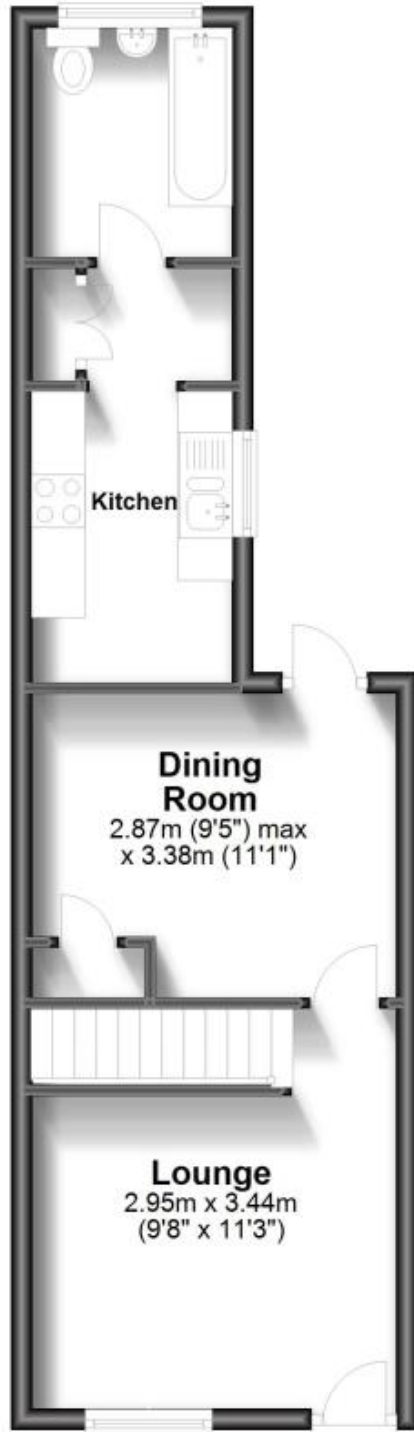
Bedroom 3 2.80m x 1.93m

Bathroom



## Ground Floor

Approx. 34.9 sq. metres (375.5 sq. feet)



## First Floor

Approx. 30.3 sq. metres (326.4 sq. feet)

