



Price

£1,100 PCM

Fees Apply

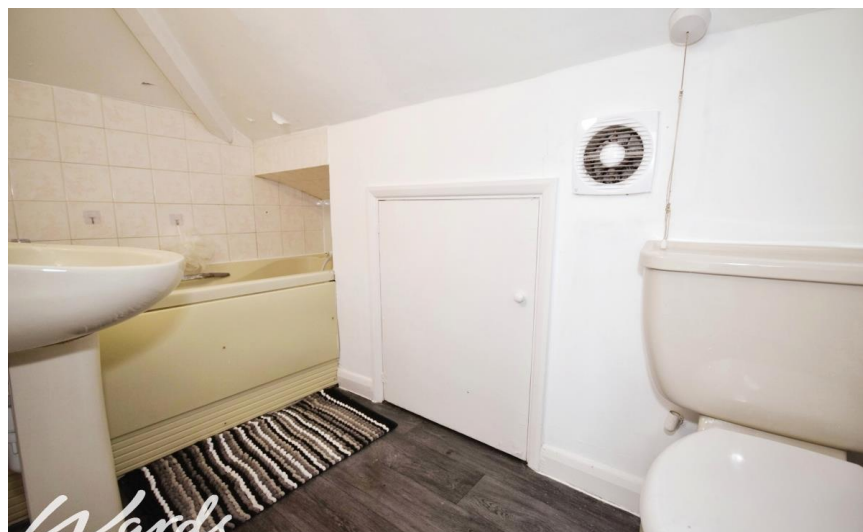
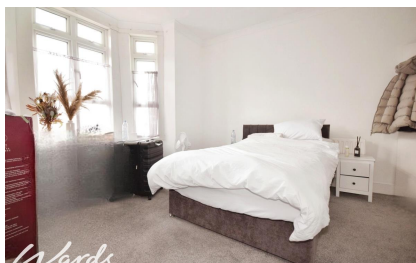


Available 31/07/24

Darnley Road
Gravesend DA11

Wards

Helping you move forwards



Main Features

- Split-level First floor apartment
- Recently refurbished throughout
- Modern kitchen
- Spacious lounge
- Walking distance to Gravesend station
- Available with no deposit

Accommodation

Lounge 3.87m x 5.20m

Kitchen 1.59m x 3.06m

Bathroom 1.23m x 2.62m

Bedroom 4.22m x 4.65m



Deposit required is £1,269.23
Gravesham District - Council Tax Band Tax Band A

Renting a property is a big commitment and we recommend that you visit the local authority website and these websites which offer helpful information and advice about letting

www.gov.uk/government/publications/how-to-rent

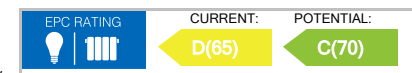
www.gov.uk/private-renting

www.wardsofkent.co.uk/renting/tenancy-fees-individuals/

www.gov.uk/green-deal-energy-saving-measures

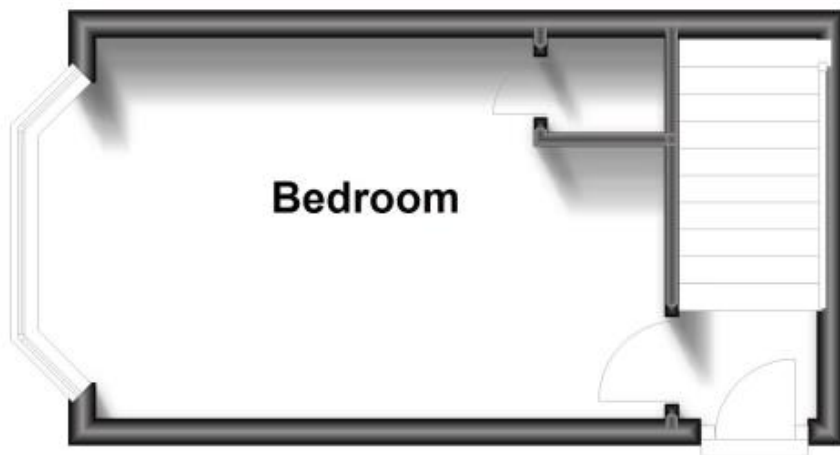
Call Dartford 01322 311291 ■ wardsofkent.co.uk

IMPORTANT INFORMATION: Please contact our Lettings Team who will confirm the total costs involved in renting this property. For clarification, we wish to inform the prospective tenant that we have prepared these details as a general guide. The agent has not carried out a detailed survey nor tested the services, appliances, or specific fittings (unless otherwise stated), and no warranty can be given as to their condition. All room measurements are taken at floor level. We strongly recommend that all the information which we provide about the property is verified by yourself and your advisers. The contents of this publication are © Wards, 2015. Wards is a trading name of Arun Estates Limited Registered in England No. 2597969



First Floor

Approx. 19.7 sq. metres (212.0 sq. feet)



Split Level Second Floor

Approx. 32.5 sq. metres (349.3 sq. feet)

