



Price

£1,850 PCM

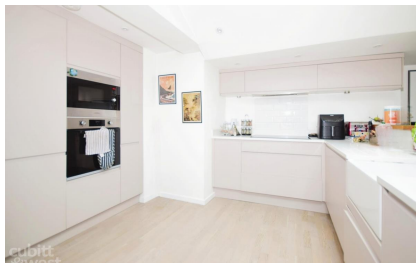
Fees Apply



Available 12/08/24

Franklin Place
Chichester PO19

cubitt&west
Helping you move forwards



Main Features

- Open House 01/07/24
- No Deposit Option
- Modern Three Bedroom
- Contemporary styling
- Light & Airy
- Garden Studio



Deposit required is £2,134.62
Chichester District - Council Tax Band Tax Band F

Renting a property is a big commitment and we recommend that you visit the local authority website and these websites which offer helpful information and advice about letting

www.gov.uk/government/publications/how-to-rent

www.gov.uk/private-renting

www.cubittandwest.co.uk/renting/tenancy-fees-individuals/

www.gov.uk/green-deal-energy-saving-measures

Call Chichester 01243 774772 ■ cubittandwest.co.uk

IMPORTANT INFORMATION: Please contact our Lettings Team who will confirm the total costs involved in renting this property. For clarification, we wish to inform the prospective tenant that we have prepared these details as a general guide. The agent has not carried out a detailed survey nor tested the services, appliances, or specific fittings (unless otherwise stated), and no warranty can be given as to their condition. All room measurements are taken at floor level. We strongly recommend that all the information which we provide about the property is verified by yourself and your advisers. The contents of this publication are © Cubitt & West, 2015. Cubitt & West is a trading name of Arun Estates Limited Registered in England No. 2597969

Accommodation

Kitchen/Lounge/Diner 36'3 x 13'10

Studio 12'9 x 10'2

Bedroom 1 12'0 x 10'6

En Suite Bathroom

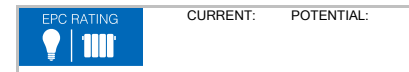
Bedroom 2 12'1 x 8'6

En Suite

Bedroom 3 10'6 x 7'7

En Suite

Shed

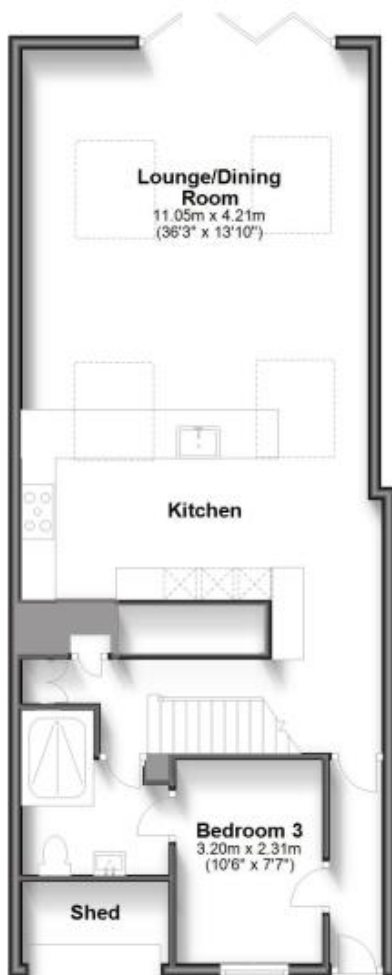




Studio
3.10m (10'2")
x 3.68m (12'9") max

Ground Floor

Approx. 79.6 sq. metres (856.4 sq. feet)



Lounge/Dining Room
11.05m x 4.21m
(36'3" x 13'10")

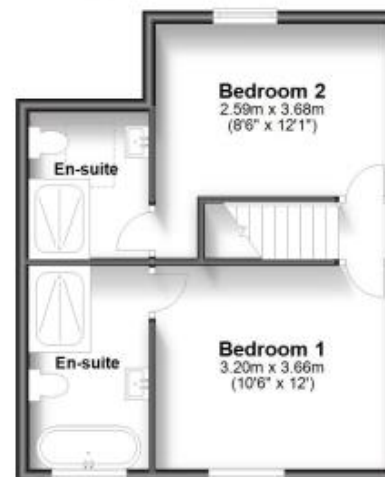
Kitchen

Bedroom 3
3.20m x 2.31m
(10'6" x 7'7")

Shed

First Floor

Approx. 36.5 sq. metres (392.8 sq. feet)



Bedroom 2
2.59m x 3.68m
(8'6" x 12'1")

En-suite

En-suite

Bedroom 1
3.20m x 3.66m
(10'6" x 12')