



Price

£1,100 PCM

Fees Apply



Available 09/09/24

Victoria Parade
Broadstairs CT10

Wards
Helping you move forwards



Main Features

- BEAUTIFUL SEASIDE APARTMENT
- PRIVATE COURTYARD GARDEN
- SHORT WALK FROM TRAIN STATION & TOWN
- STONE'S THROW AWAY FROM VIKING BAY
- FITTED BATHROOM SUITE WITH SHOWER
- OPEN PLAN LIVING

Accommodation

Open Plan Living 6.60 x 5.62

Bedroom One 5.33 x 2.44

Bedroom Two 4.29 x 2.12

Bathroom 2.37 x 2.51

Courtyard Garden

Double Bedroom 2



Deposit required is £1,269.23
Thanet District - Council Tax Band Tax Band B

Renting a property is a big commitment and we recommend that you visit the local authority website and these websites which offer helpful information and advice about letting

www.gov.uk/government/publications/how-to-rent

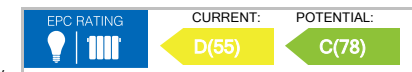
www.gov.uk/private-renting

www.wardsofkent.co.uk/renting/tenancy-fees-individuals/

www.gov.uk/green-deal-energy-saving-measures

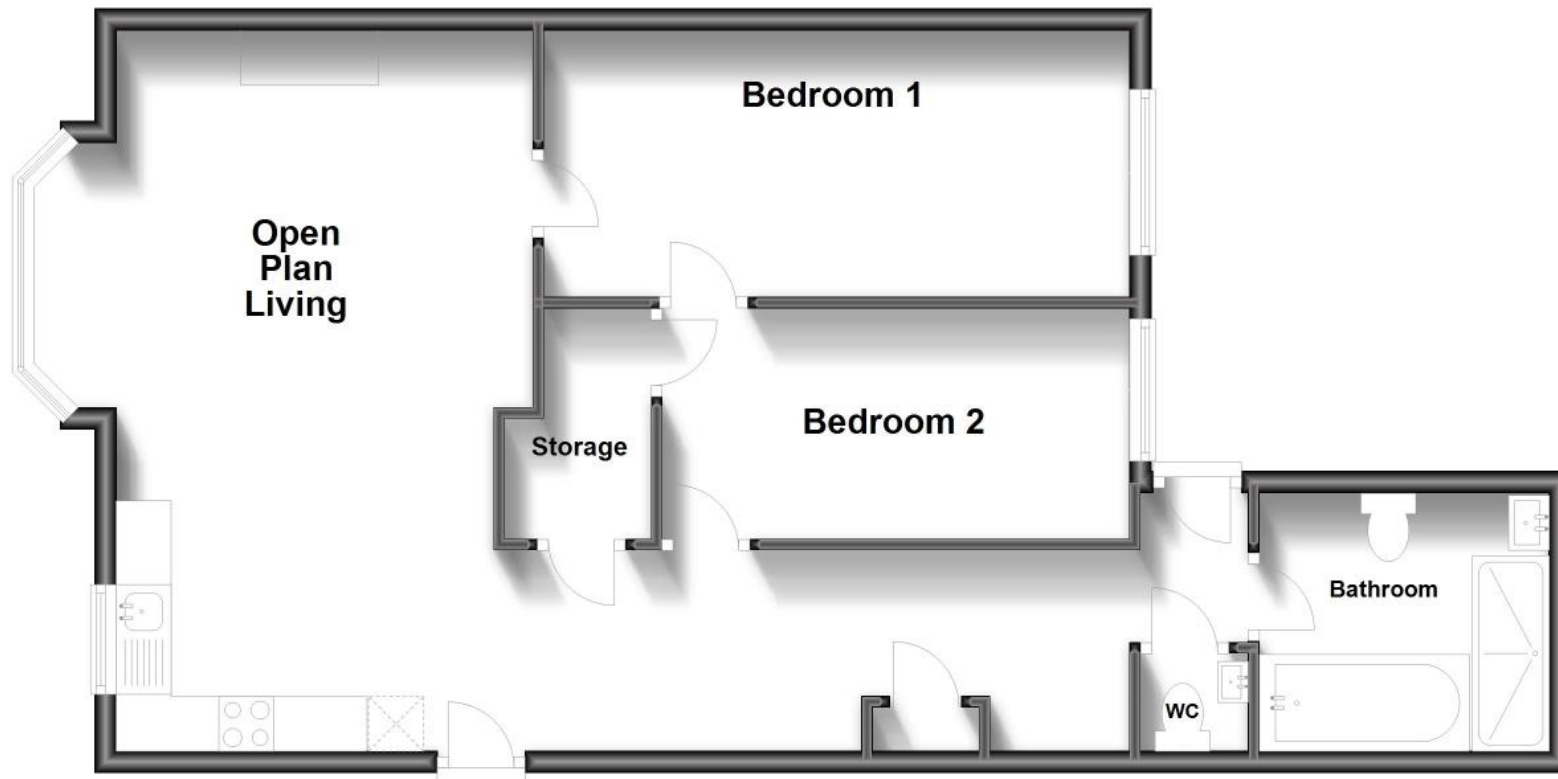
Call Thanet 01843 597600 ■ wardsofkent.co.uk

IMPORTANT INFORMATION: Please contact our Lettings Team who will confirm the total costs involved in renting this property. For clarification, we wish to inform the prospective tenant that we have prepared these details as a general guide. The agent has not carried out a detailed survey nor tested the services, appliances, or specific fittings (unless otherwise stated), and no warranty can be given as to their condition. All room measurements are taken at floor level. We strongly recommend that all the information which we provide about the property is verified by yourself and your advisers. The contents of this publication are © Wards, 2015. Wards is a trading name of Arun Estates Limited Registered in England No. 2597969



Floor Plan

Approx. 69.6 sq. metres (748.7 sq. feet)



Total area: approx. 69.6 sq. metres (748.7 sq. feet)