



Price

£1,300 PCM

Fees Apply



Available 10/08/24

Lilac Crescent  
Rochester ME2

*Wards*  
Helping you move forwards



## Main Features

- THROUGH LOUNGE
- FITTED KITCHEN
- TWO DOUBLE BEDROOMS
- SHOWER ROOM
- BEAUTIFUL GARDEN
- OFF STREET PARKING

## Accommodation

- Lounge 3.38x3.15
- Kitchen 3.20x1.91
- Dining area 3.28x2.97
- Bedroom One 5.39x2.97
- Bedroom Two 3.33x3.18
- Shower Room 2.21x1.93
- Sun Room 3.20x1.91



Deposit required is £1,500.00  
Medway - Council Tax Band Tax Band C

Renting a property is a big commitment and we recommend that you visit the local authority website and these websites which offer helpful information and advice about letting

[www.gov.uk/government/publications/how-to-rent](http://www.gov.uk/government/publications/how-to-rent)

[www.gov.uk/private-renting](http://www.gov.uk/private-renting)

[www.wardsofkent.co.uk/letting/our-tenancy-fees/](http://www.wardsofkent.co.uk/letting/our-tenancy-fees/)

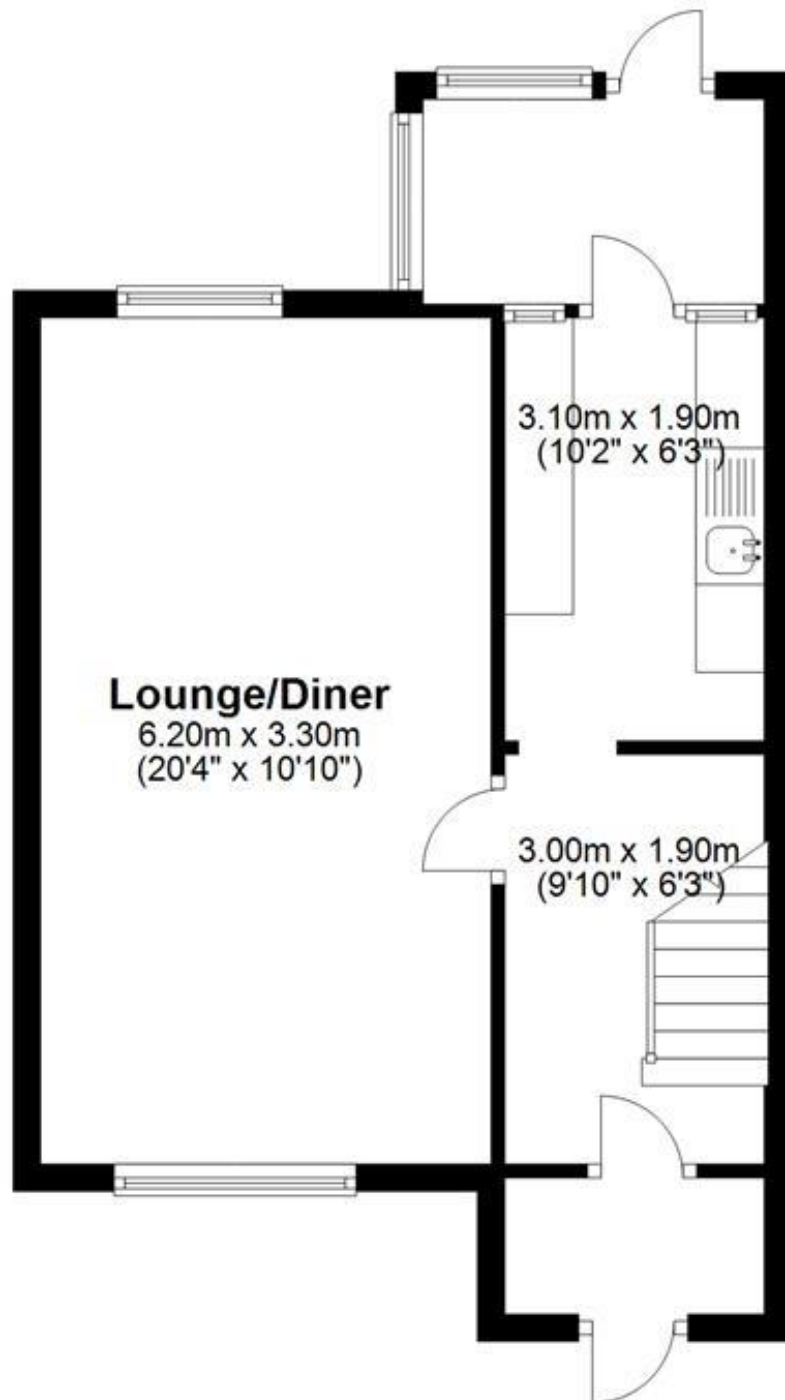
[www.gov.uk/green-deal-energy-saving-measures](http://www.gov.uk/green-deal-energy-saving-measures)

Call Medway 01634 714848 ■ [wardsofkent.co.uk](http://wardsofkent.co.uk)

IMPORTANT INFORMATION: Please note that administration fees are charged in addition to the rent and security deposit. Please contact our Lettings Team who will confirm the total costs involved in renting this property. For clarification, we wish to inform the prospective tenant that we have prepared these details as a general guide. The agent has not carried out a detailed survey nor tested the services, appliances, or specific fittings (unless otherwise stated), and no warranty can be given as to their condition. All room measurements are taken at floor level. We strongly recommend that all the information which we provide about the property is verified by yourself and your advisers. The contents of this publication are © Wards, 2015. Wards is a trading name of Arun Estates Limited Registered in England No. 2597969



## Ground Floor



## First Floor

