



## Price

£1,300 PCM

Fees Apply



Available 10/07/24

Sheep Street  
Petersfield GU32

**cubitt&west**  
Helping you move forwards



## Main Features

- **Pets Considered**
- **Central Petersfield**
- **Allocated parking**
- **Two double bedrooms**
- **Private garden**
- **Close to station**

## Accommodation

### Hall

**Lounge** 4.5 x 3.43

**Kitchen Diner** 4.4 x 3.18

### Cloakroom

**Bedroom One** 3.79 x 3.46

**Bedroom Two** 3.43 x 2.41

### Shower Room



**Deposit required is £1,500.00**  
**East Hampshire District - Council Tax Band Tax Band D**

Renting a property is a big commitment and we recommend that you visit the local authority website and these websites which offer helpful information and advice about letting

[www.gov.uk/government/publications/how-to-rent](http://www.gov.uk/government/publications/how-to-rent)

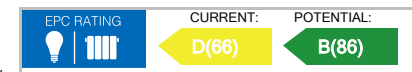
[www.gov.uk/private-renting](http://www.gov.uk/private-renting)

[www.cubittandwest.co.uk/renting/tenancy-fees-individuals/](http://www.cubittandwest.co.uk/renting/tenancy-fees-individuals/)

[www.gov.uk/green-deal-energy-saving-measures](http://www.gov.uk/green-deal-energy-saving-measures)

**Call Chichester 01243 774772 ■ [cubittandwest.co.uk](http://cubittandwest.co.uk)**

IMPORTANT INFORMATION: Please contact our Lettings Team who will confirm the total costs involved in renting this property. For clarification, we wish to inform the prospective tenant that we have prepared these details as a general guide. The agent has not carried out a detailed survey nor tested the services, appliances, or specific fittings (unless otherwise stated), and no warranty can be given as to their condition. All room measurements are taken at floor level. We strongly recommend that all the information which we provide about the property is verified by yourself and your advisers. The contents of this publication are © Cubitt & West, 2015. Cubitt & West is a trading name of Arun Estates Limited Registered in England No. 2597969



## Ground Floor

Approx. 38.9 sq. metres (418.2 sq. feet)



### Kitchen/Dining Room

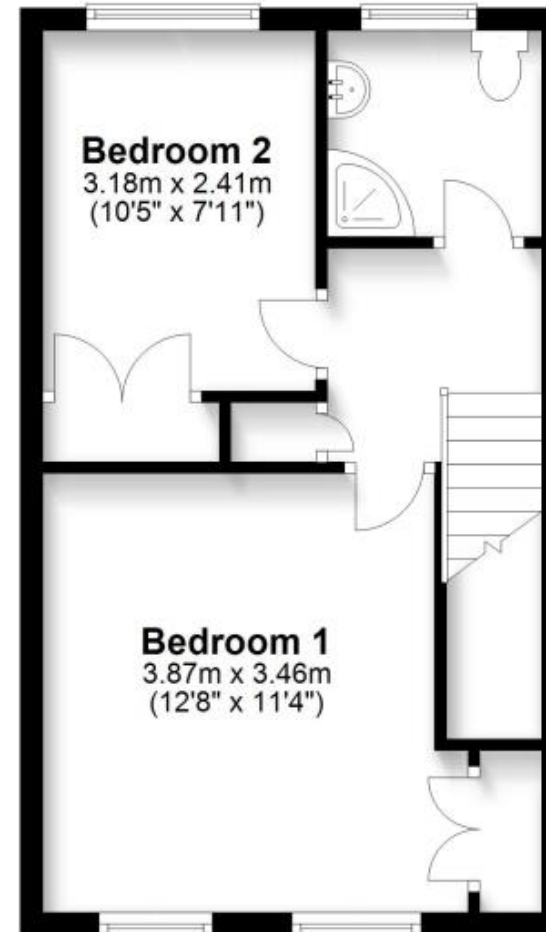
3.18m x 4.40m  
(10'5" x 14'5")

### Lounge

4.50m x 3.43m  
(14'9" x 11'3")

## First Floor

Approx. 34.2 sq. metres (367.6 sq. feet)



### Bedroom 2

3.18m x 2.41m  
(10'5" x 7'11")

### Bedroom 1

3.87m x 3.46m  
(12'8" x 11'4")

Total area: approx. 73.0 sq. metres (785.8 sq. feet)