

Available with
no deposit



Price

£1,775 PCM

Fees Apply



Available 29/06/24

Mercer Street
Tunbridge Wells TN1

Wards

Helping you move forwards



Main Features

- Versatile living
- Popular location
- Garden
- On street permit parking
- Available now
- No deposit option



Deposit required is £2,048.08
Tunbridge Wells District - Council Tax Band Tax Band C

Renting a property is a big commitment and we recommend that you visit the local authority website and these websites which offer helpful information and advice about letting

www.gov.uk/government/publications/how-to-rent

www.gov.uk/private-renting

www.wardsofkent.co.uk/renting/tenancy-fees-individuals/

www.gov.uk/green-deal-energy-saving-measures

Call Tonbridge 01732 770833 ■ wardsofkent.co.uk

IMPORTANT INFORMATION: Please contact our Lettings Team who will confirm the total costs involved in renting this property. For clarification, we wish to inform the prospective tenant that we have prepared these details as a general guide. The agent has not carried out a detailed survey nor tested the services, appliances, or specific fittings (unless otherwise stated), and no warranty can be given as to their condition. All room measurements are taken at floor level. We strongly recommend that all the information which we provide about the property is verified by yourself and your advisers. The contents of this publication are © Wards, 2015. Wards is a trading name of Arun Estates Limited Registered in England No. 2597969

Accommodation

Lounge 4.75 x 3.15

Bathroom 2.77 x 2.47

Kitchen/Diner 4.93 x 3.20

Utility Room 3.18 x 1.63

WC

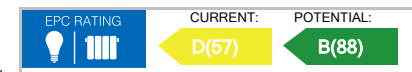
Bedroom 1 3.28 x 3.18

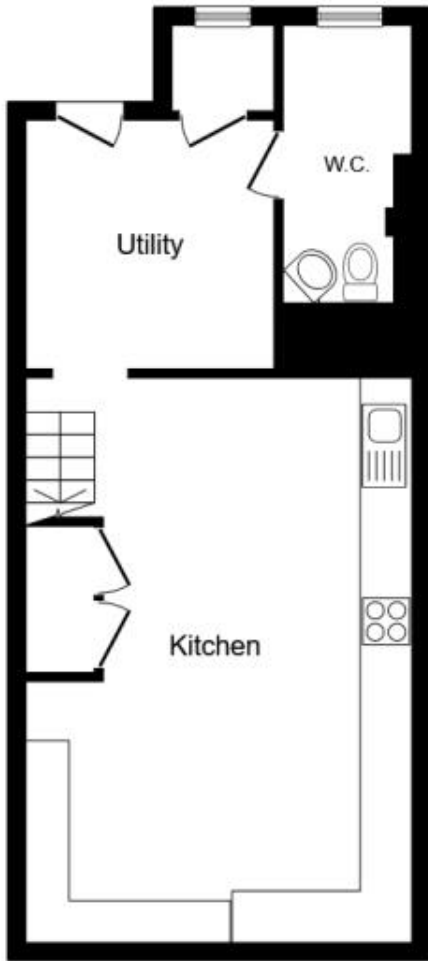
Bedroom 2 3.18 x 3.15

Bedroom 3 4.93 x 3.10

Garden

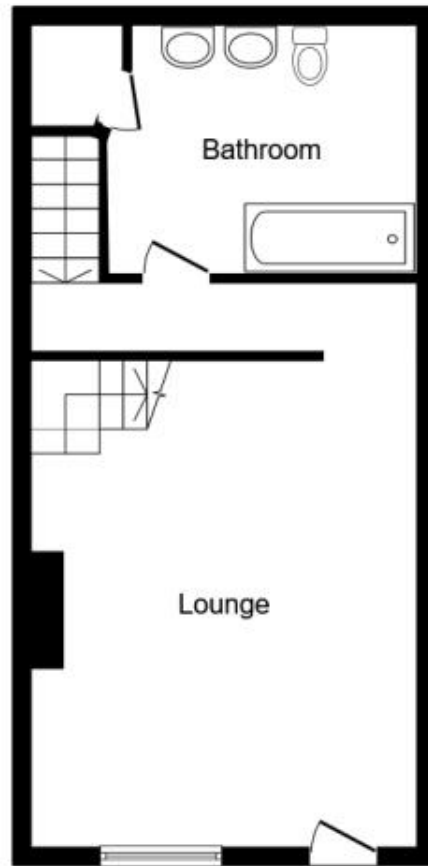
On street parking





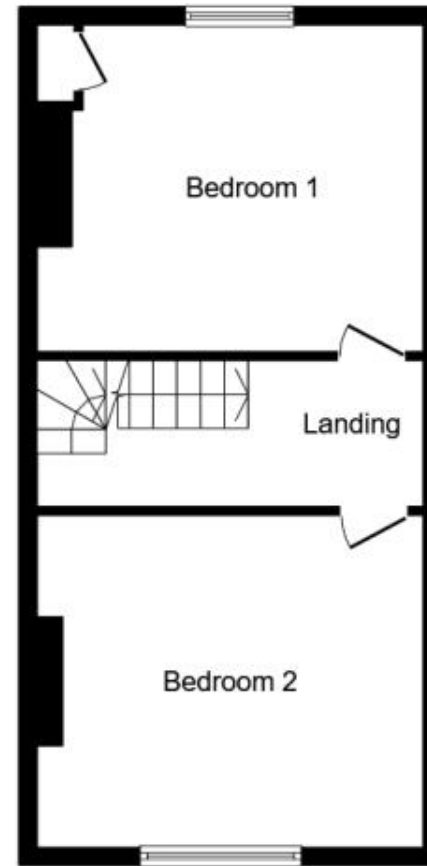
Lower Ground Floor

Floor area 46.0 sq.m. (495 sq.ft.)



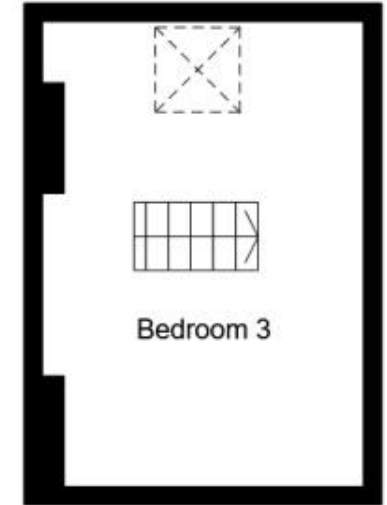
Ground Floor

Floor area 42.9 sq.m. (462 sq.ft.)



First Floor

Floor area 42.9 sq.m. (462 sq.ft.)



Second Floor

Floor area 20.2 sq.m. (217 sq.ft.)

TOTAL: 152.0 sq.m. (1,636 sq.ft.)

This floor plan is for illustrative purposes only. It is not drawn to scale. Any measurements, floor areas (including any total floor area), openings and orientations are approximate. No details are guaranteed, they cannot be relied upon for any purpose and do not form any part of any agreement. No liability is taken for any error, omission or misstatement. A party must rely upon its own inspection(s). Powered by www.Propertybox.io