



Price

£1,000 PCM

Fees Apply



Available 05/07/24

Townsend Road
Snodland ME6

Wards
Helping you move forwards



Main Features

- One Bedroom House
- Video Walk About Available
- Rear & Front Garden
- Two Parking Spaces
- Well Presented
- Popular Location

Accommodation

- Entrance Porch
- Kitchen 4.23x1.55
- Living/Dining Room 4.23x3.60
- Stairs & Landing
- Bedroom 3.20x3.08
- Bathroom 2.05x1.90
- Rear & Front Garden
- Two Allocated Parking Spaces



Deposit required is £1,153.85
Tonbridge and Malling District - Council Tax Band Tax Band B

Renting a property is a big commitment and we recommend that you visit the local authority website and these websites which offer helpful information and advice about letting

www.gov.uk/government/publications/how-to-rent

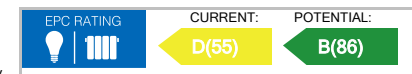
www.gov.uk/private-renting

www.wardsofkent.co.uk/renting/tenancy-fees-individuals/

www.gov.uk/green-deal-energy-saving-measures

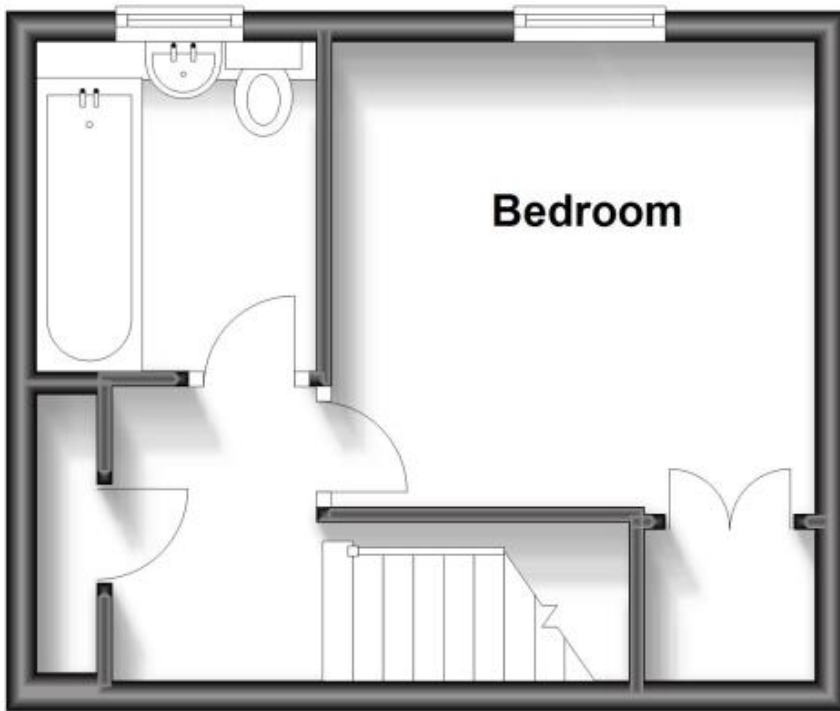
Call Maidstone 01622 675064 ■ wardsofkent.co.uk

IMPORTANT INFORMATION: Please contact our Lettings Team who will confirm the total costs involved in renting this property. For clarification, we wish to inform the prospective tenant that we have prepared these details as a general guide. The agent has not carried out a detailed survey nor tested the services, appliances, or specific fittings (unless otherwise stated), and no warranty can be given as to their condition. All room measurements are taken at floor level. We strongly recommend that all the information which we provide about the property is verified by yourself and your advisers. The contents of this publication are © Wards, 2015. Wards is a trading name of Arun Estates Limited Registered in England No. 2597969



First Floor

Approx. 21.8 sq. metres (234.5 sq. feet)



Ground Floor

Approx. 23.9 sq. metres (256.9 sq. feet)

