

Available
no deposit



Price

£1,900 PCM

Fees Apply

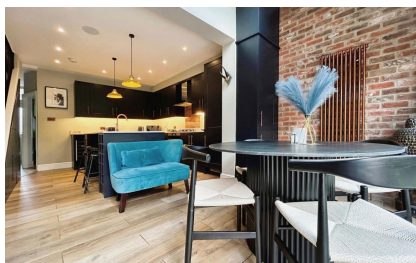


Available 31/05/24

Waterloo Road
Tonbridge TN9

Wards

Helping you move forwards



Main Features

- Beautifully finished throughout
- Driveway
- Courtyard garden
- Integrated appliances
- Modern bathroom
- Available now



Deposit required is £2,192.31
Tonbridge and Malling District - Council Tax Band Tax Band C

Renting a property is a big commitment and we recommend that you visit the local authority website and these websites which offer helpful information and advice about letting

www.gov.uk/government/publications/how-to-rent

www.gov.uk/private-renting

www.wardsofkent.co.uk/renting/tenancy-fees-individuals/

www.gov.uk/green-deal-energy-saving-measures

Call Tonbridge 01732 770833 ■ wardsofkent.co.uk

IMPORTANT INFORMATION: Please contact our Lettings Team who will confirm the total costs involved in renting this property. For clarification, we wish to inform the prospective tenant that we have prepared these details as a general guide. The agent has not carried out a detailed survey nor tested the services, appliances, or specific fittings (unless otherwise stated), and no warranty can be given as to their condition. All room measurements are taken at floor level. We strongly recommend that all the information which we provide about the property is verified by yourself and your advisers. The contents of this publication are © Wards, 2015. Wards is a trading name of Arun Estates Limited Registered in England No. 2597969

Accommodation

Entrance hallway

Lounge 4.37 x 3.28

Kitchen/Diner 6.48 x 4.02

Bedroom 1 3.38 x 2.49

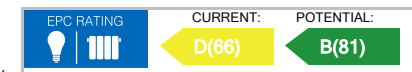
Bedroom 2 3.30 x 2.24

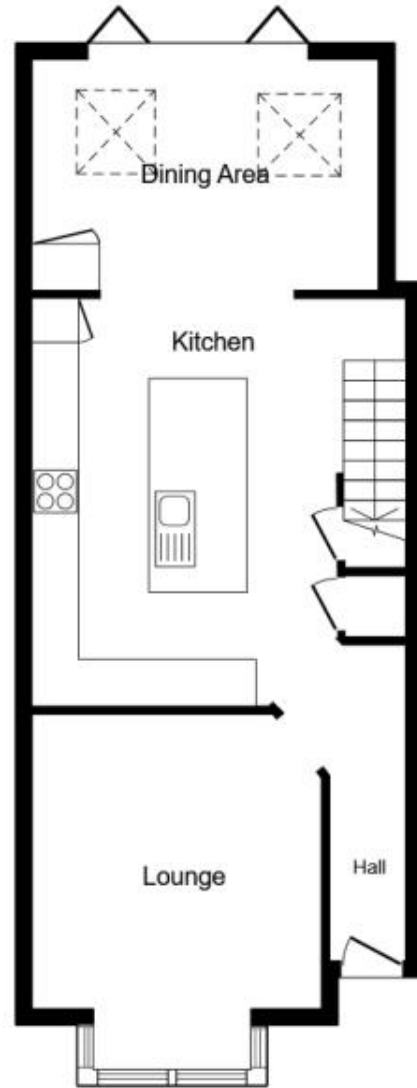
Bedroom 3 2.47 x 1.93

Bathroom 2.47 x 1.37

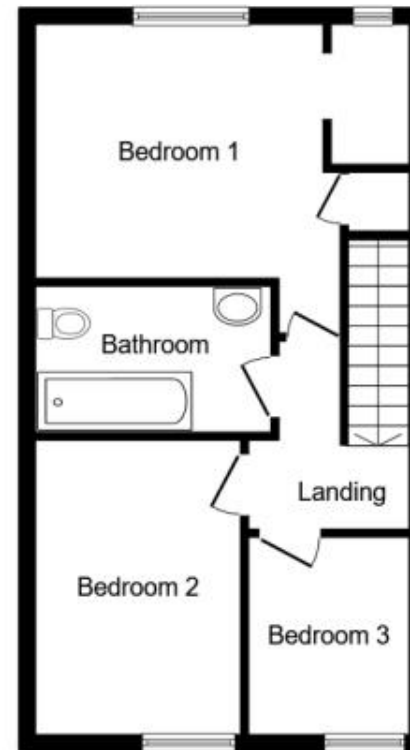
Garden

Driveway





Ground Floor
 Floor area 58.1 m² (626 sq.ft.)



First Floor
 Floor area 43.6 m² (470 sq.ft.)

TOTAL: 101.8 m² (1,096 sq.ft.)

This floor plan is for illustrative purposes only. It is not drawn to scale. Any measurements, floor areas (including any total floor area), openings and orientations are approximate. No details are guaranteed, they cannot be relied upon for any purpose and do not form any part of any agreement. No liability is taken for any error, omission or misstatement. A party must rely upon its own inspection(s). Powered by www.Propertybox.io