



Price

£1,400 PCM

Fees Apply



Available 25/05/24

High Street Tenterden
TN30

Wards

Helping you move forwards



Main Features

- Exceptional apartment
- Vast open plan living space
- Contemporary styling
- Master bedroom en suite
- Private gated entrance
- Central Tenterden

Accommodation

Hallway

Bedroom 2 3.56 x 3.18

Family bathroom

Bedroom 1 3.69 x 3.41

En suite

Lounge area 6.13 x 5.03

Kitchen dining area 5.03 x 4.07



Deposit required is £1,615.38
Ashford District - Council Tax Band Tax Band C

Renting a property is a big commitment and we recommend that you visit the local authority website and these websites which offer helpful information and advice about letting

www.gov.uk/government/publications/how-to-rent

www.gov.uk/private-renting

www.wardsofkent.co.uk/renting/tenancy-fees-individuals/

www.gov.uk/green-deal-energy-saving-measures

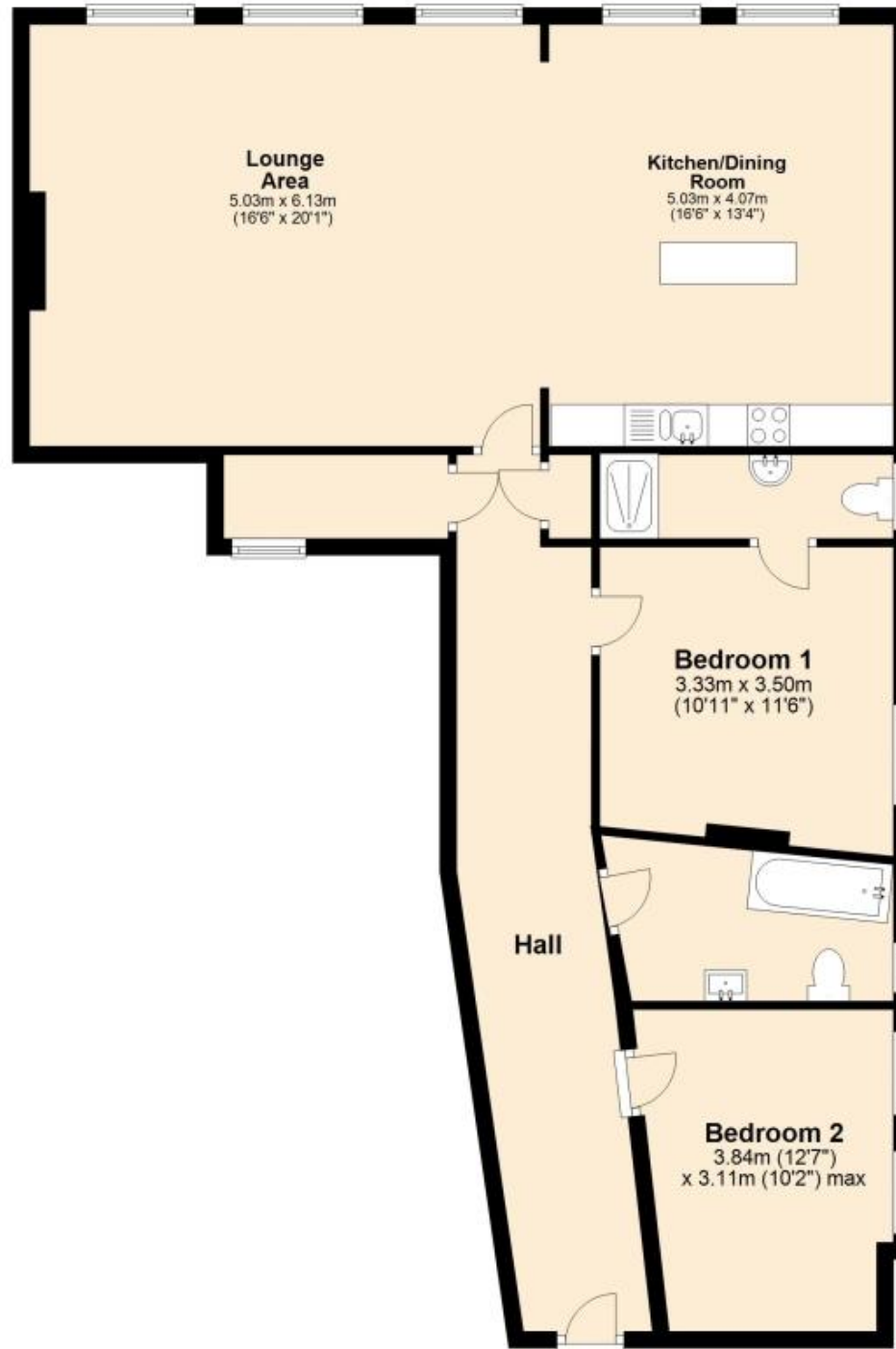
Call Whitstable 01227 200691 ■ wardsofkent.co.uk

IMPORTANT INFORMATION: Please contact our Lettings Team who will confirm the total costs involved in renting this property. For clarification, we wish to inform the prospective tenant that we have prepared these details as a general guide. The agent has not carried out a detailed survey nor tested the services, appliances, or specific fittings (unless otherwise stated), and no warranty can be given as to their condition. All room measurements are taken at floor level. We strongly recommend that all the information which we provide about the property is verified by yourself and your advisers. The contents of this publication are © Wards, 2015. Wards is a trading name of Arun Estates Limited Registered in England No. 2597969



First Floor

Approx. 107.7 sq. metres (1159.6 sq. feet)



Total area: approx. 107.7 sq. metres (1159.6 sq. feet)