



Price

£1,700 PCM

Fees Apply

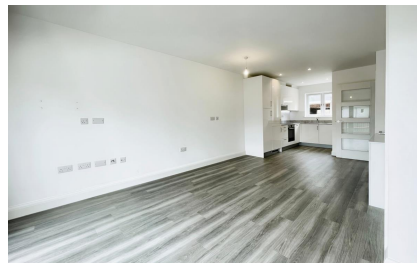


Available 29/06/24

Rosehip Lane
Tunbridge Wells TN2

Wards

Helping you move forwards



Main Features

- **Modern development**
- **Allocated parking**
- **Integrated appliances**
- **WC & Bathroom**
- **Beautiful finish throughout**
- **Available June**

Accommodation

Entrance hallway

WC

Lounge/dining room/kitchen 8.36 x 4.12

Bedroom 2 4.19 x 2.98

Bathroom 2.19 x 1.89

Bedroom 1 4.15 x 3.94

Garden

Allocated parking



Deposit required is £1,961.54
- Council Tax Band Tax Band D

Renting a property is a big commitment and we recommend that you visit the local authority website and these websites which offer helpful information and advice about letting

www.gov.uk/government/publications/how-to-rent

www.gov.uk/private-renting

www.wardsofkent.co.uk/renting/tenancy-fees-individuals/

www.gov.uk/green-deal-energy-saving-measures

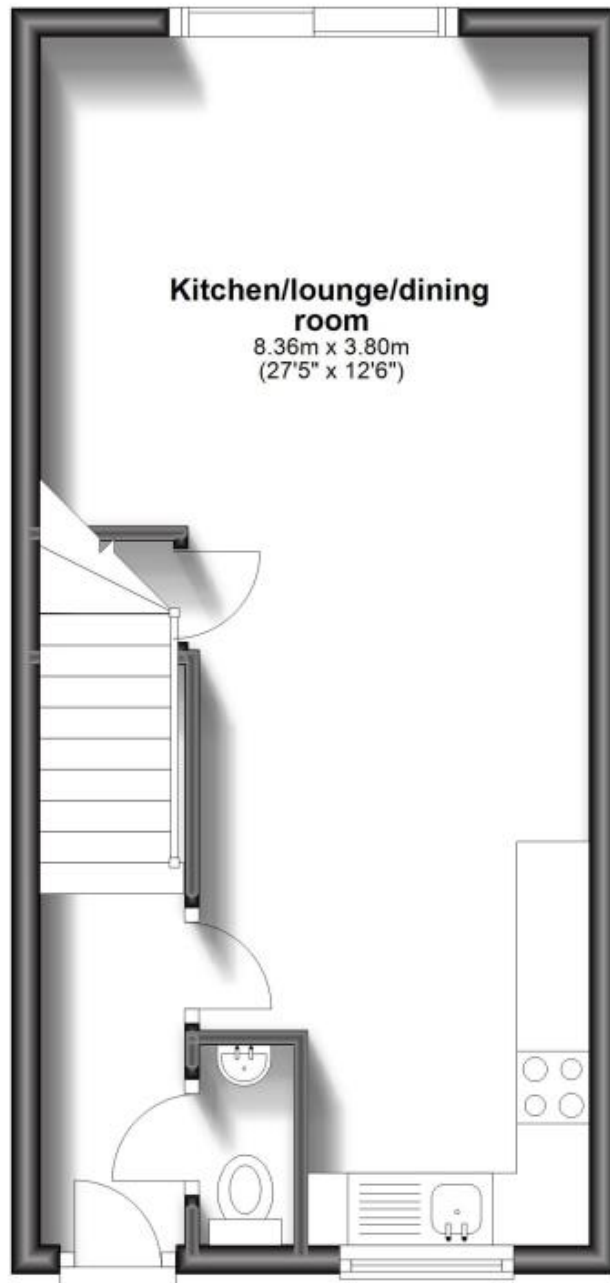
Call Tonbridge 01732 770833 ■ wardsofkent.co.uk

IMPORTANT INFORMATION: Please contact our Lettings Team who will confirm the total costs involved in renting this property. For clarification, we wish to inform the prospective tenant that we have prepared these details as a general guide. The agent has not carried out a detailed survey nor tested the services, appliances, or specific fittings (unless otherwise stated), and no warranty can be given as to their condition. All room measurements are taken at floor level. We strongly recommend that all the information which we provide about the property is verified by yourself and your advisers. The contents of this publication are © Wards, 2015. Wards is a trading name of Arun Estates Limited Registered in England No. 2597969



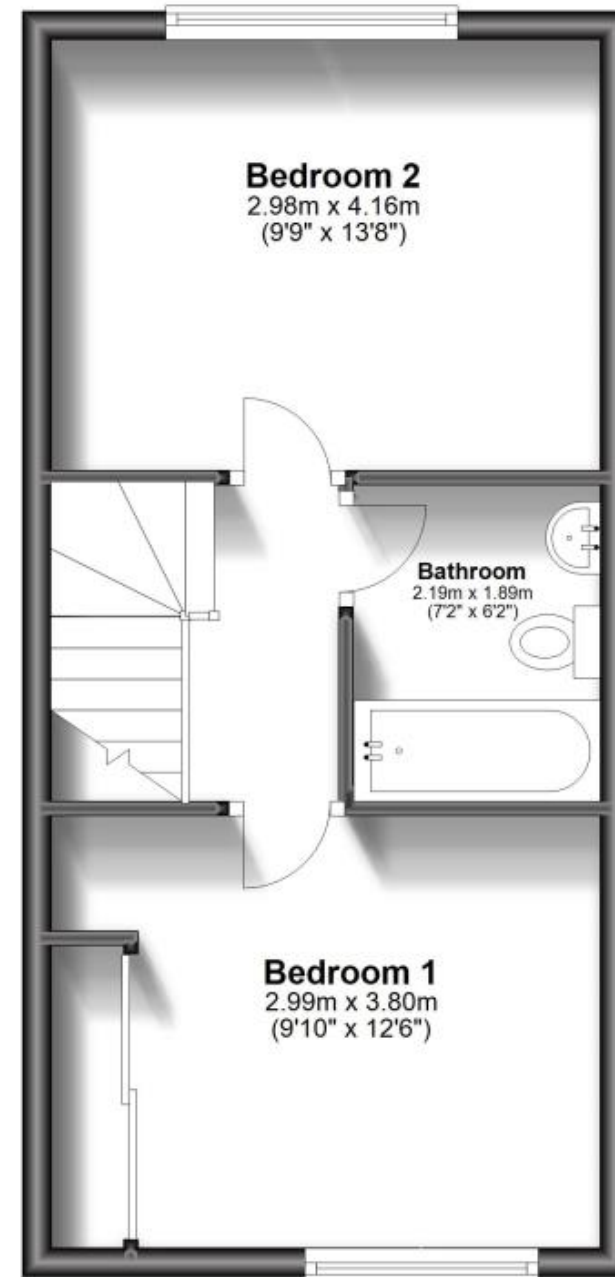
Ground Floor

Approx. 31.8 sq. metres (341.9 sq. feet)



First Floor

Approx. 33.2 sq. metres (357.8 sq. feet)



Total area: approx. 65.0 sq. metres (699.7 sq. feet)