



Price

£1,700 PCM

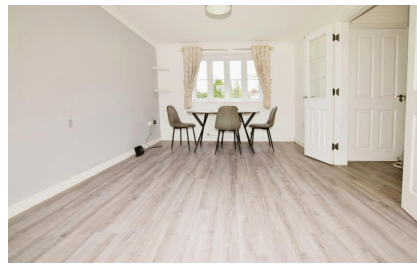
Fees Apply



Available 06/04/24

St. Mary'S Close
Thakeham RH20

cubitt&west
Helping you move forwards



Main Features

- Available Now
- Cul-De-Sac Location
- Kitchen/Dining Room
- En-suite Shower Room
- Parking For Two Cars
- South West Facing Garden

Accommodation



Deposit required is £1,961.54
- Council Tax Band Tax Band E

Renting a property is a big commitment and we recommend that you visit the local authority website and these websites which offer helpful information and advice about letting

www.gov.uk/government/publications/how-to-rent

www.gov.uk/private-renting

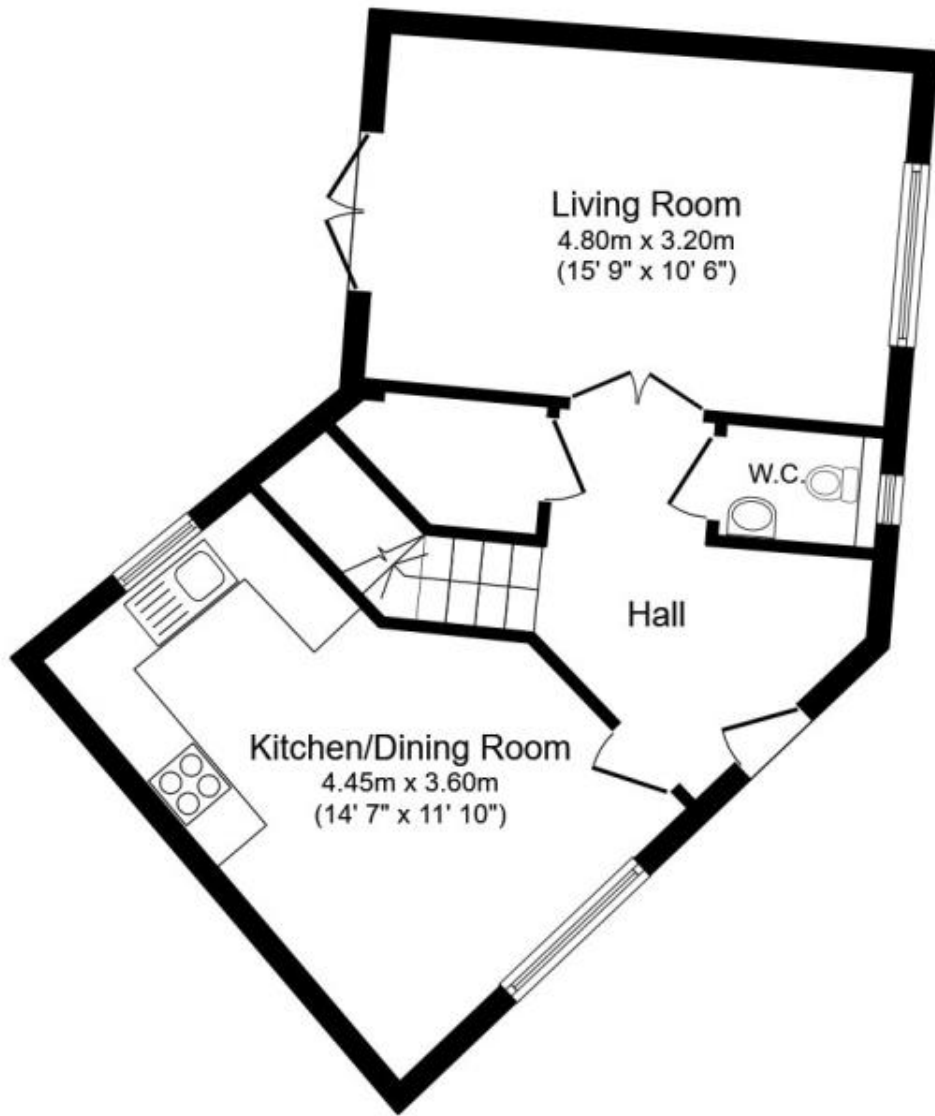
www.cubittandwest.co.uk/renting/tenancy-fees-individuals/

www.gov.uk/green-deal-energy-saving-measures

Call Horsham 01403 269988 ■ **cubittandwest.co.uk**

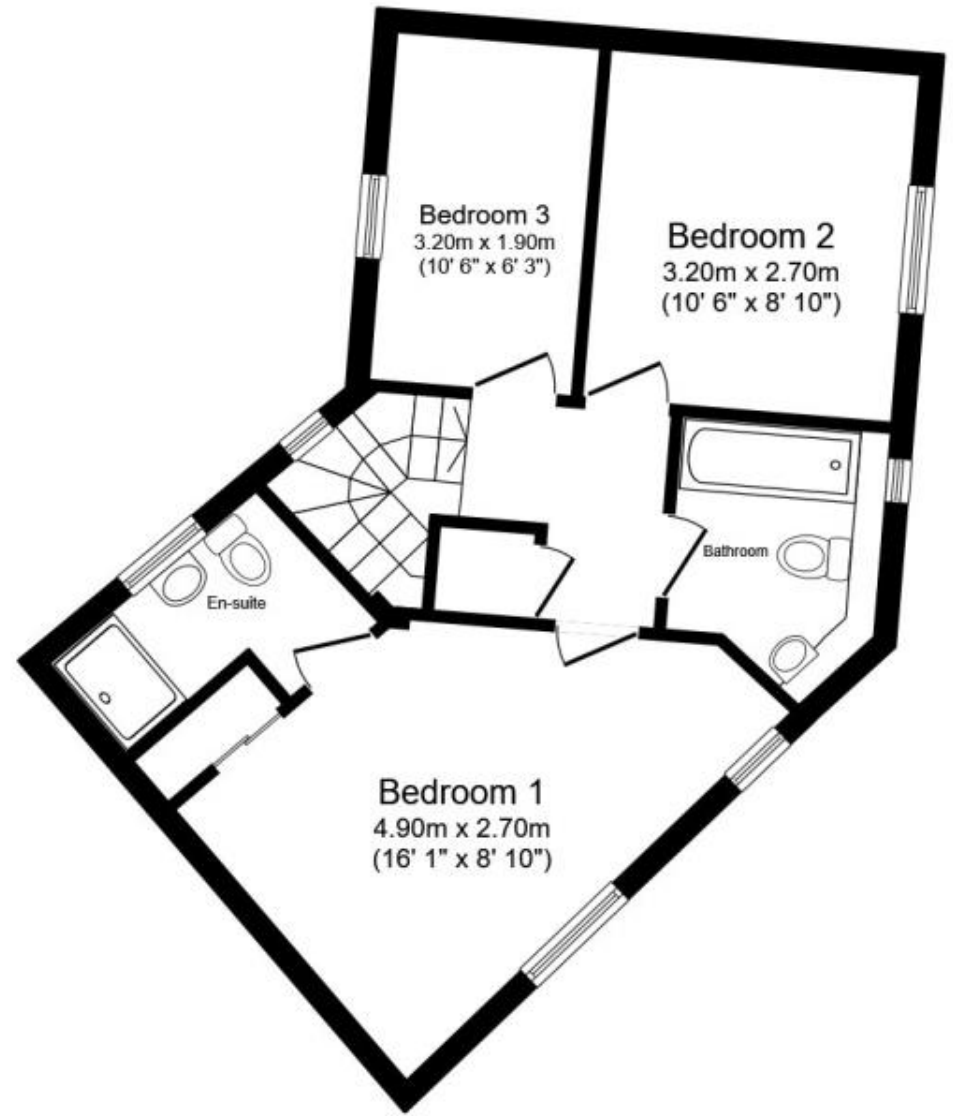
IMPORTANT INFORMATION: Please contact our Lettings Team who will confirm the total costs involved in renting this property. For clarification, we wish to inform the prospective tenant that we have prepared these details as a general guide. The agent has not carried out a detailed survey nor tested the services, appliances, or specific fittings (unless otherwise stated), and no warranty can be given as to their condition. All room measurements are taken at floor level. We strongly recommend that all the information which we provide about the property is verified by yourself and your advisers. The contents of this publication are © Cubitt & West, 2015. Cubitt & West is a trading name of Arun Estates Limited Registered in England No. 2597969





Ground Floor

Floor area 45.7 sq.m. (492 sq.ft.)



First Floor

Floor area 45.5 sq.m. (490 sq.ft.)

TOTAL: 91.2 sq.m. (982 sq.ft.)

This floor plan is for illustrative purposes only. It is not drawn to scale. Any measurements, floor areas (including any total floor area), openings and orientations are approximate. No details are guaranteed, they cannot be relied upon for any purpose and do not form any part of any agreement. No liability is taken for any error, omission or misstatement. A party must rely upon its own inspection(s). Powered by www.Propertybox.io