



Price

£2,000 PCM

Fees Apply



Available 06/05/24

Bethel Road  
Welling DA16

*Wards*  
Helping you move forwards



## Main Features

- Semi Detached Family Home
- Driveway
- Downstairs bathroom with WC upstairs
- Furnished
- Ideally located for reputable schools
- Available with no deposit



Deposit required is £2,307.69  
Bexley London - Council Tax Band Tax Band E

Renting a property is a big commitment and we recommend that you visit the local authority website and these websites which offer helpful information and advice about letting

[www.gov.uk/government/publications/how-to-rent](http://www.gov.uk/government/publications/how-to-rent)

[www.gov.uk/private-renting](http://www.gov.uk/private-renting)

[www.wardsofkent.co.uk/letting/our-tenancy-fees/](http://www.wardsofkent.co.uk/letting/our-tenancy-fees/)

[www.gov.uk/green-deal-energy-saving-measures](http://www.gov.uk/green-deal-energy-saving-measures)

Call Dartford 01322 311291 ■ [wardsofkent.co.uk](http://wardsofkent.co.uk)

IMPORTANT INFORMATION: Please note that administration fees are charged in addition to the rent and security deposit. Please contact our Lettings Team who will confirm the total costs involved in renting this property. For clarification, we wish to inform the prospective tenant that we have prepared these details as a general guide. The agent has not carried out a detailed survey nor tested the services, appliances, or specific fittings (unless otherwise stated), and no warranty can be given as to their condition. All room measurements are taken at floor level. We strongly recommend that all the information which we provide about the property is verified by yourself and your advisers. The contents of this publication are © Wards, 2015. Wards is a trading name of Arun Estates Limited Registered in England No. 2597969

## Accommodation

Entrance Hall

Porch

Lounge/Dining Area 7.35m x 3.95m

Kitchen 4.75m x 5.57m

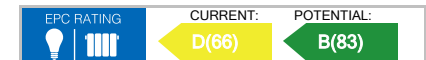
Bathroom 1.46m x 1.59m

Bedroom 1 3.03m x 3.81m

Bedroom 2 2.74m x 3.59,

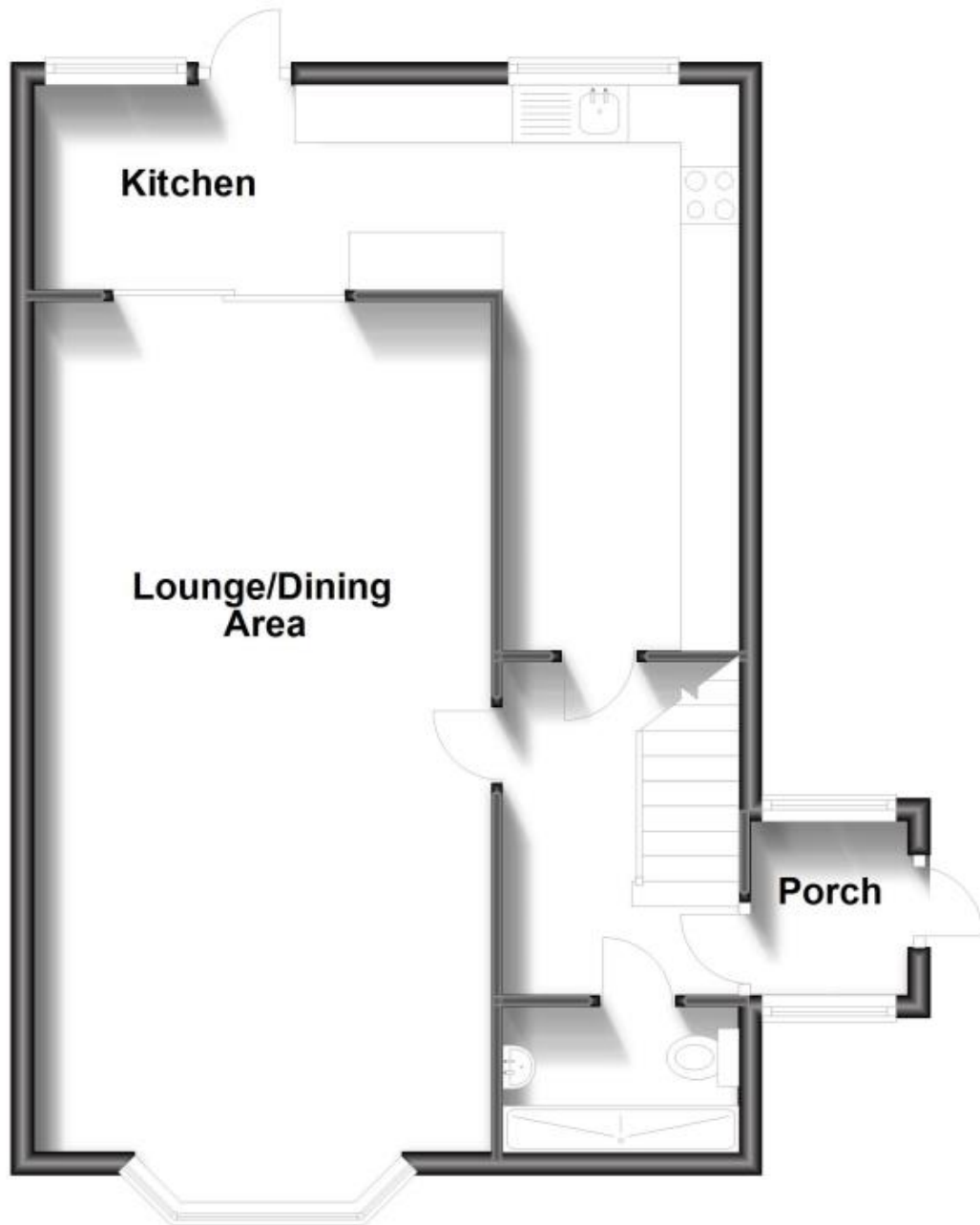
Bedroom 3 2.72m x 2.02m

WC 0.59m x 1.03m





## Ground Floor



## First Floor

