



## Price

£2,250 PCM

Fees Apply



Available 30/03/24

Fawkham Manor  
Fawkham Lane  
DA3

*Wards*  
Helping you move forwards





## Main Features

- BRAND NEW HOME
- LOUNGE
- KITCHEN
- MASTER WITH ENSUITE
- THREE FURTHER BEDROOMS
- MAIN BATHROOM



Deposit required is £2,596.15  
Sevenoaks District - Council Tax Band Tax Band F

Renting a property is a big commitment and we recommend that you visit the local authority website and these websites which offer helpful information and advice about letting

[www.gov.uk/government/publications/how-to-rent](http://www.gov.uk/government/publications/how-to-rent)

[www.gov.uk/private-renting](http://www.gov.uk/private-renting)

[www.wardsofkent.co.uk/letting/our-tenancy-fees/](http://www.wardsofkent.co.uk/letting/our-tenancy-fees/)

[www.gov.uk/green-deal-energy-saving-measures](http://www.gov.uk/green-deal-energy-saving-measures)

Call Dartford 01322 311291 ■ [wardsofkent.co.uk](http://wardsofkent.co.uk)

IMPORTANT INFORMATION: Please note that administration fees are charged in addition to the rent and security deposit. Please contact our Lettings Team who will confirm the total costs involved in renting this property. For clarification, we wish to inform the prospective tenant that we have prepared these details as a general guide. The agent has not carried out a detailed survey nor tested the services, appliances, or specific fittings (unless otherwise stated), and no warranty can be given as to their condition. All room measurements are taken at floor level. We strongly recommend that all the information which we provide about the property is verified by yourself and your advisers. The contents of this publication are © Wards, 2015. Wards is a trading name of Arun Estates Limited Registered in England No. 2597969

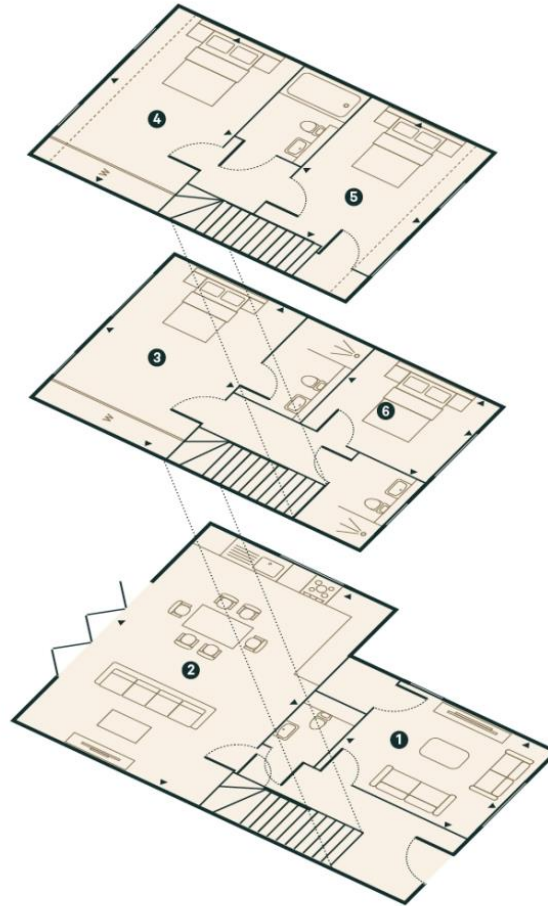
## Accommodation

Lounge  
Kitchen  
Master  
Ensuite  
Bedroom Two  
Bedroom Three  
Bedroom Four  
Main Bathroom  
WC

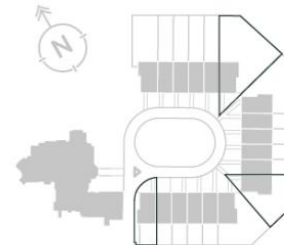


# Townhouse

NOS. 9, 15 & 21



1.	Living Room	12.5 ft x 9.5 ft	3.8 m x 2.9 m
2.	Kitchen/Dining/Family Room	21.5 ft x 14.5 ft	6.5 m x 4.4 m
3.	Bedroom 1	16.8 ft x 11.2 ft	5.1 m x 3.4 m
4.	Bedroom 2	16.8 ft x 11.2 ft	5.1 m x 3.4 m
5.	Bedroom 3	14.1 ft x 10.9 ft	4.3 m x 3.3 m
6.	Bedroom 4	10.8 ft x 8.5 ft	3.3 m x 2.6 m
<b>OVERALL</b>		<b>1,603 ft<sup>2</sup></b>	<b>149 m<sup>2</sup></b>



These details are intended to give a general indication of the proposed specification. The developer operates a policy of continuous product development and reserves the right to alter any part of the development specification at any time. Where brands are specified the developer reserves the right to replace the brand with another of equal quality or better. Imagery is for illustrative purposes only.