



## Price

**£1,500 PCM**

Fees Apply



Available 29/03/24

Lower Range Road  
Gravesend DA12

*Wards*

Helping you move forwards



## Main Features

- Recently Decorated
- Shower Room & Bathroom
- Garden
- Video Tour Available
- Ideal Family Home
- Good Transport Links



Deposit required is £1,730.77  
Gravesham District - Council Tax Band Tax Band B

Renting a property is a big commitment and we recommend that you visit the local authority website and these websites which offer helpful information and advice about letting

[www.gov.uk/government/publications/how-to-rent](http://www.gov.uk/government/publications/how-to-rent)

[www.gov.uk/private-renting](http://www.gov.uk/private-renting)

[www.wardsofkent.co.uk/renting/tenancy-fees-individuals/](http://www.wardsofkent.co.uk/renting/tenancy-fees-individuals/)

[www.gov.uk/green-deal-energy-saving-measures](http://www.gov.uk/green-deal-energy-saving-measures)

Call Dartford 01322 311291 ■ [wardsofkent.co.uk](http://wardsofkent.co.uk)

IMPORTANT INFORMATION: Please contact our Lettings Team who will confirm the total costs involved in renting this property. For clarification, we wish to inform the prospective tenant that we have prepared these details as a general guide. The agent has not carried out a detailed survey nor tested the services, appliances, or specific fittings (unless otherwise stated), and no warranty can be given as to their condition. All room measurements are taken at floor level. We strongly recommend that all the information which we provide about the property is verified by yourself and your advisers. The contents of this publication are © Wards, 2015. Wards is a trading name of Arun Estates Limited Registered in England No. 2597969

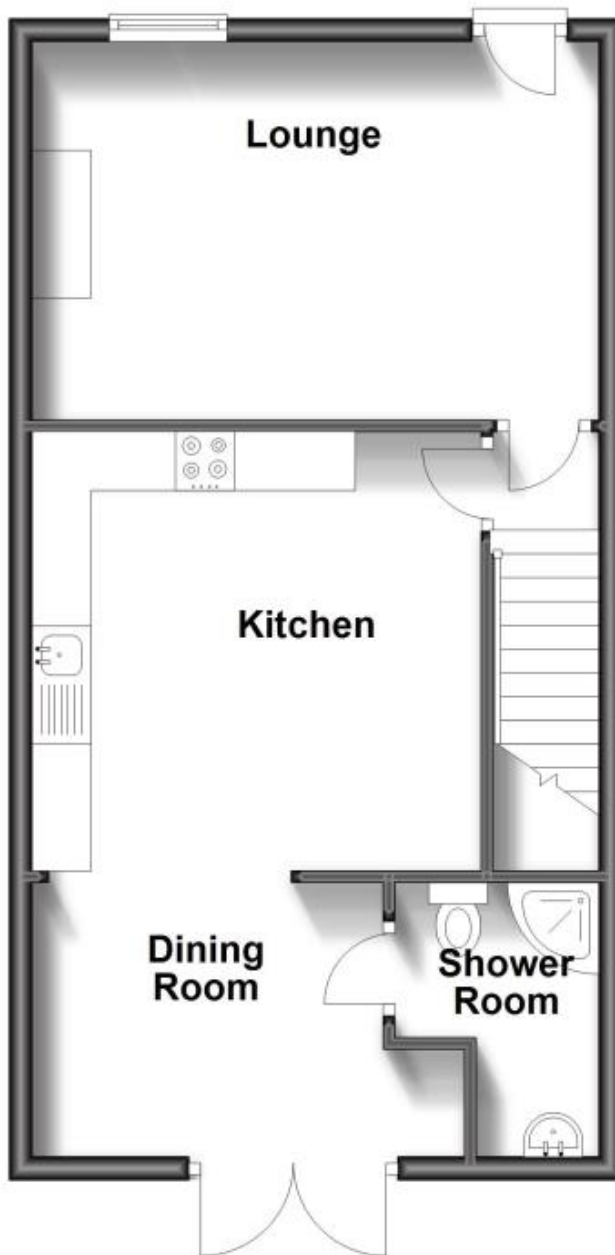
## Accommodation

Entrance Hall  
Lounge  
Kitchen  
Shower Room  
Bedroom 1  
Bedroom 2  
Bedroom 3  
Bathroom  
Garden



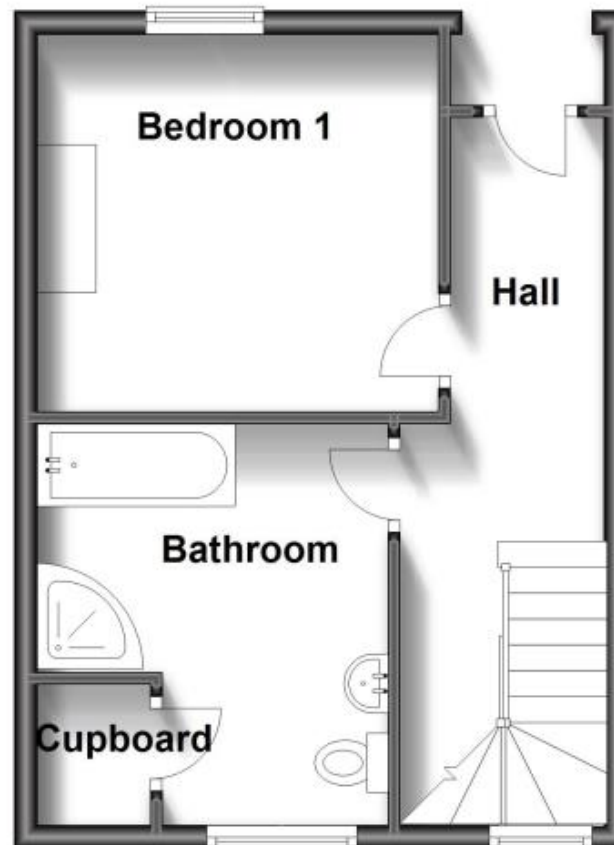
## Ground Floor

Approx. 44.0 sq. metres (473.3 sq. feet)



## First Floor

Approx. 36.8 sq. metres (396.5 sq. feet)



## Second Floor

Approx. 31.4 sq. metres (338.3 sq. feet)

