



**Price**

**£900 PCM**

Fees Apply

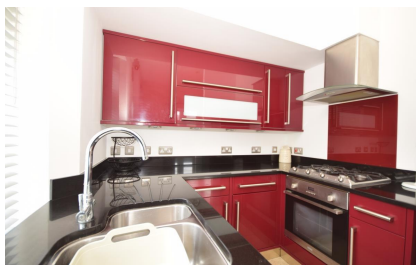


Available 28/03/24

**Manor Road Shanklin  
PO37**

**Pittis**  
Helping you move forwards





## Main Features

- One Bedroom
- Fully Furnished
- Character Building
- Communal Gardens
- Parking
- March Move

## Accommodation

Communal Entrance Hall  
Flat Hallway  
Living Area 4.7m x 4.45m  
Kitchen 2.2m x 2.24m  
Bathroom 1.9m x 2.9m  
Bedroom 4.6m x 3.3m  
Parking Space  
Communal Gardens



Deposit required is £1,038.46  
Isle of Wight - Council Tax Band Tax Band B

Renting a property is a big commitment and we recommend that you visit the local authority website and these websites which offer helpful information and advice about letting

[www.gov.uk/government/publications/how-to-rent](http://www.gov.uk/government/publications/how-to-rent)

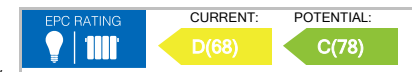
[www.gov.uk/private-renting](http://www.gov.uk/private-renting)

[www.pittis.co.uk/renting/tenancy-fees-individuals/](http://www.pittis.co.uk/renting/tenancy-fees-individuals/)

[www.gov.uk/green-deal-energy-saving-measures](http://www.gov.uk/green-deal-energy-saving-measures)

Call Ryde 01983 563785 ■ [pittis.co.uk](http://pittis.co.uk)

IMPORTANT INFORMATION: Please contact our Lettings Team who will confirm the total costs involved in renting this property. For clarification, we wish to inform the prospective tenant that we have prepared these details as a general guide. The agent has not carried out a detailed survey nor tested the services, appliances, or specific fittings (unless otherwise stated), and no warranty can be given as to their condition. All room measurements are taken at floor level. We strongly recommend that all the information which we provide about the property is verified by yourself and your advisers. The contents of this publication are © Pittis, 2015. Pittis is a trading name of Arun Estates Limited Registered in England No. 2597969



# First Floor

Approx. 42.2 sq. metres (454.5 sq. feet)

