



**Price**

**£1,300 PCM**

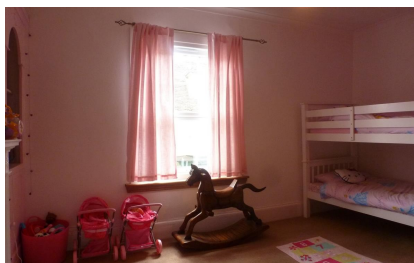
Fees Apply



Available 04/04/24

**High Street Farningham  
DA4**

*Wards*  
Helping you move forwards



## Main Features

- SPACIOUS LOUNGE
- OPEN PLAN
- TWO BEDROOMS
- CELLAR
- VILLAGE LOCATION
- COURTYARD GARDEN



**Deposit required is £1,500.00**  
**Sevenoaks District - Council Tax Band Tax Band E**

Renting a property is a big commitment and we recommend that you visit the local authority website and these websites which offer helpful information and advice about letting

[www.gov.uk/government/publications/how-to-rent](http://www.gov.uk/government/publications/how-to-rent)

[www.gov.uk/private-renting](http://www.gov.uk/private-renting)

[www.wardsofkent.co.uk/renting/tenancy-fees-individuals/](http://www.wardsofkent.co.uk/renting/tenancy-fees-individuals/)

[www.gov.uk/green-deal-energy-saving-measures](http://www.gov.uk/green-deal-energy-saving-measures)

**Call Dartford 01322 311291 ■ [wardsofkent.co.uk](http://wardsofkent.co.uk)**

IMPORTANT INFORMATION: Please contact our Lettings Team who will confirm the total costs involved in renting this property. For clarification, we wish to inform the prospective tenant that we have prepared these details as a general guide. The agent has not carried out a detailed survey nor tested the services, appliances, or specific fittings (unless otherwise stated), and no warranty can be given as to their condition. All room measurements are taken at floor level. We strongly recommend that all the information which we provide about the property is verified by yourself and your advisers. The contents of this publication are © Wards, 2015. Wards is a trading name of Arun Estates Limited Registered in England No. 2597969

## Accommodation

Balcony  
 Garden  
 Bedroom 1  
 Shower room  
 Bedroom 2  
 Basement  
 Kitchen  
 Bathroom  
 Lounge area



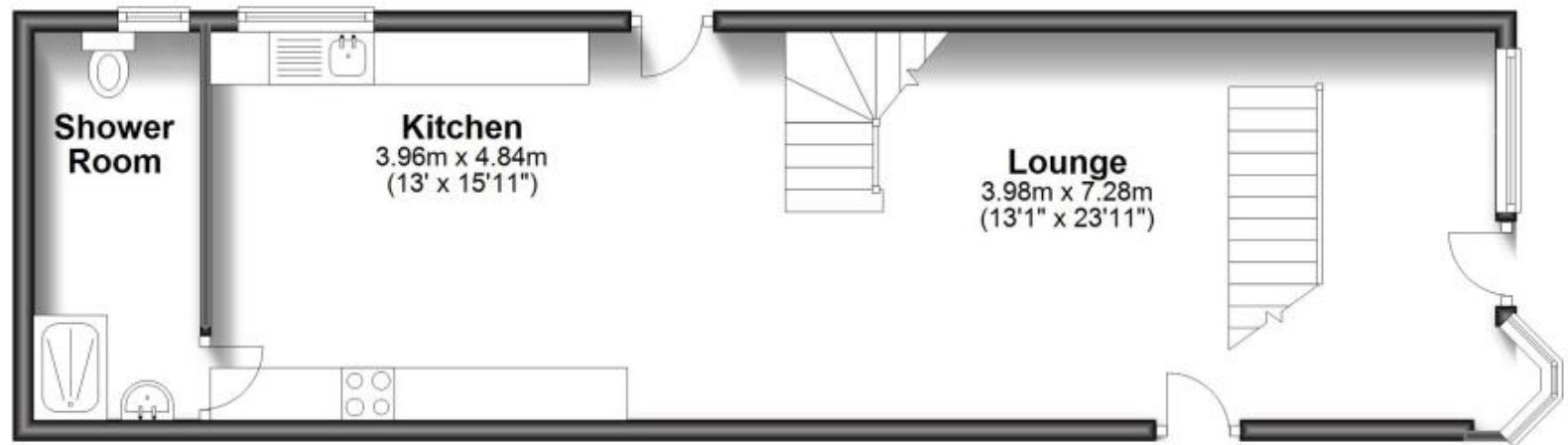
## Basement

Approx. 12.2 sq. metres (131.1 sq. feet)



## Ground Floor

Approx. 55.2 sq. metres (593.9 sq. feet)



## First Floor

Approx. 58.6 sq. metres (630.5 sq. feet)

