



Price

£1,700 PCM

Fees Apply



Available 29/02/24

Beaufort Court Saxon
Chase TN27

Wards

Helping you move forwards



Main Features

- Modern Detached Home
- Video Walk About Available
- No Deposit Option Available
- Equipped Kitchen
- En Suite & Family Bathroom
- Electric Charging Station



Deposit required is £1,961.54
Maidstone District - Council Tax Band Tax Band E

Renting a property is a big commitment and we recommend that you visit the local authority website and these websites which offer helpful information and advice about letting

www.gov.uk/government/publications/how-to-rent

www.gov.uk/private-renting

www.wardsofkent.co.uk/renting/tenancy-fees-individuals/

www.gov.uk/green-deal-energy-saving-measures

Call Maidstone 01622 675064 ■ wardsofkent.co.uk

IMPORTANT INFORMATION: Please contact our Lettings Team who will confirm the total costs involved in renting this property. For clarification, we wish to inform the prospective tenant that we have prepared these details as a general guide. The agent has not carried out a detailed survey nor tested the services, appliances, or specific fittings (unless otherwise stated), and no warranty can be given as to their condition. All room measurements are taken at floor level. We strongly recommend that all the information which we provide about the property is verified by yourself and your advisers. The contents of this publication are © Wards, 2015. Wards is a trading name of Arun Estates Limited Registered in England No. 2597969

Accommodation

Entrance Hallway
Lounge 4.00x3.76
Kitchen/Diner 8.50x2.88
Utility Room 1.74x1.60
Cloakroom 1.65x0.92
Stairs & Landing
Bedroom 1 4.00x3.29
En Suite 185/1.79
Bedroom 2 2.94x2.90
Bedroom 3 2.90x2.53

Bathroom 2.10x1.70

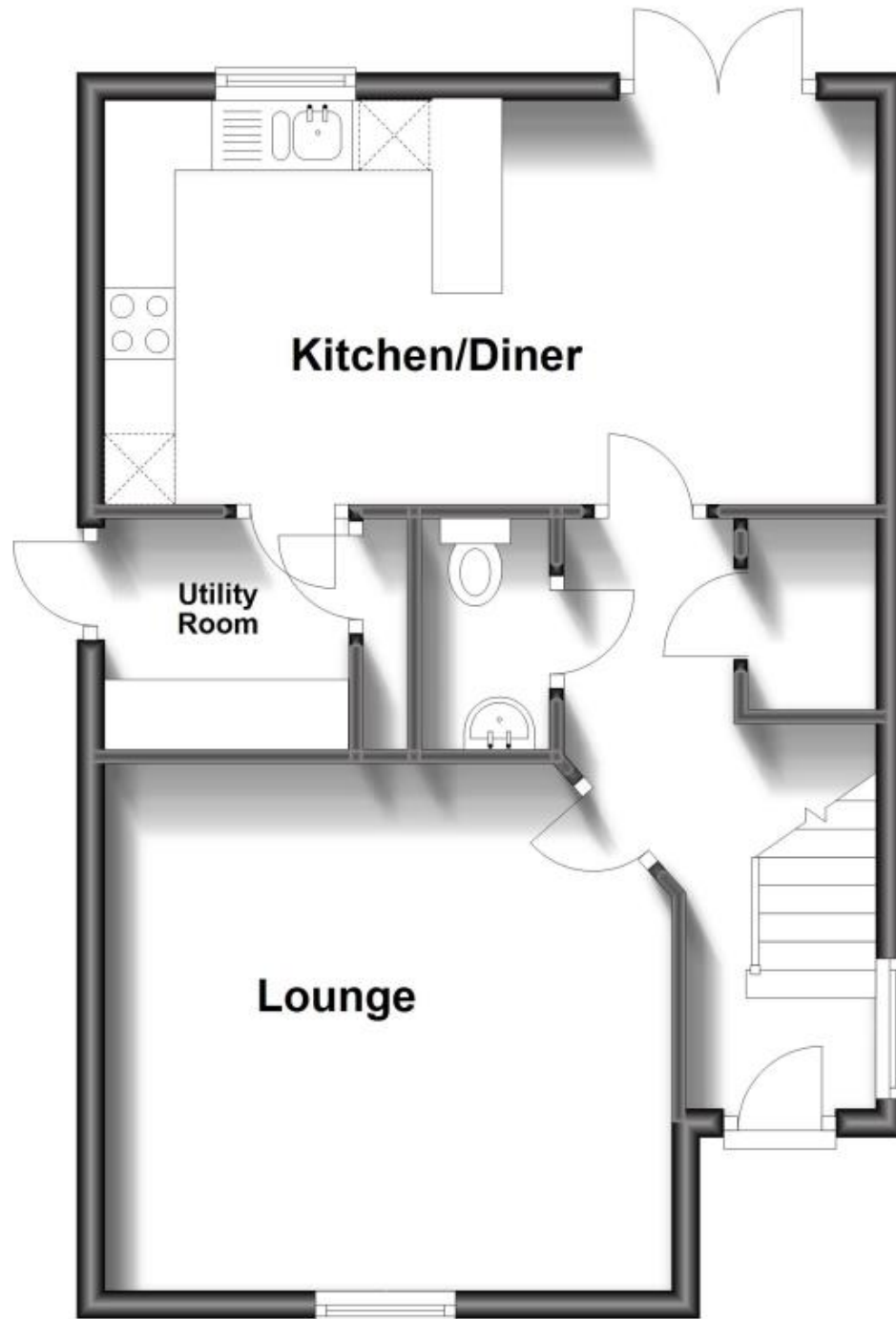
Garden

Two Allocated Off-Road Par Spaces



Ground Floor

Approx. 44.8 sq. metres (482.4 sq. feet)



First Floor

Approx. 44.5 sq. metres (479.1 sq. feet)

