

Available with  
no deposit



## Price

£2,400 PCM

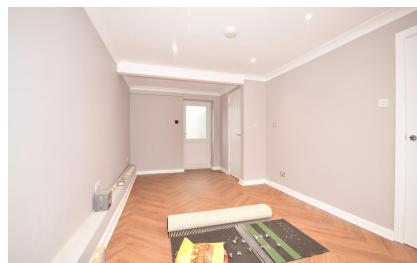
Fees Apply



Available 24/02/24

Nightingale Close,  
Crawley, RH11

**cubitt&west**  
Helping you move forwards



## Main Features

- Newly-Renovated
- Driveway
- Downstairs Bedroom
- En-Suite
- Two Shower Rooms
- Hard-Flooring



Deposit required is £2,769.23  
Crawley District - Council Tax Band Tax Band C

Renting a property is a big commitment and we recommend that you visit the local authority website and these websites which offer helpful information and advice about letting

[www.gov.uk/government/publications/how-to-rent](http://www.gov.uk/government/publications/how-to-rent)

[www.gov.uk/private-renting](http://www.gov.uk/private-renting)

[www.cubittandwest.co.uk/renting/tenancy-fees-individuals/](http://www.cubittandwest.co.uk/renting/tenancy-fees-individuals/)

[www.gov.uk/green-deal-energy-saving-measures](http://www.gov.uk/green-deal-energy-saving-measures)

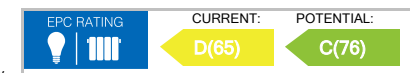
Call Crawley 01293 544100 ■ [cubittandwest.co.uk](http://cubittandwest.co.uk)

IMPORTANT INFORMATION: Please contact our Lettings Team who will confirm the total costs involved in renting this property. For clarification, we wish to inform the prospective tenant that we have prepared these details as a general guide. The agent has not carried out a detailed survey nor tested the services, appliances, or specific fittings (unless otherwise stated), and no warranty can be given as to their condition. All room measurements are taken at floor level. We strongly recommend that all the information which we provide about the property is verified by yourself and your advisers. The contents of this publication are © Cubitt & West, 2015. Cubitt & West is a trading name of Arun Estates Limited Registered in England No. 2597969

## Accommodation

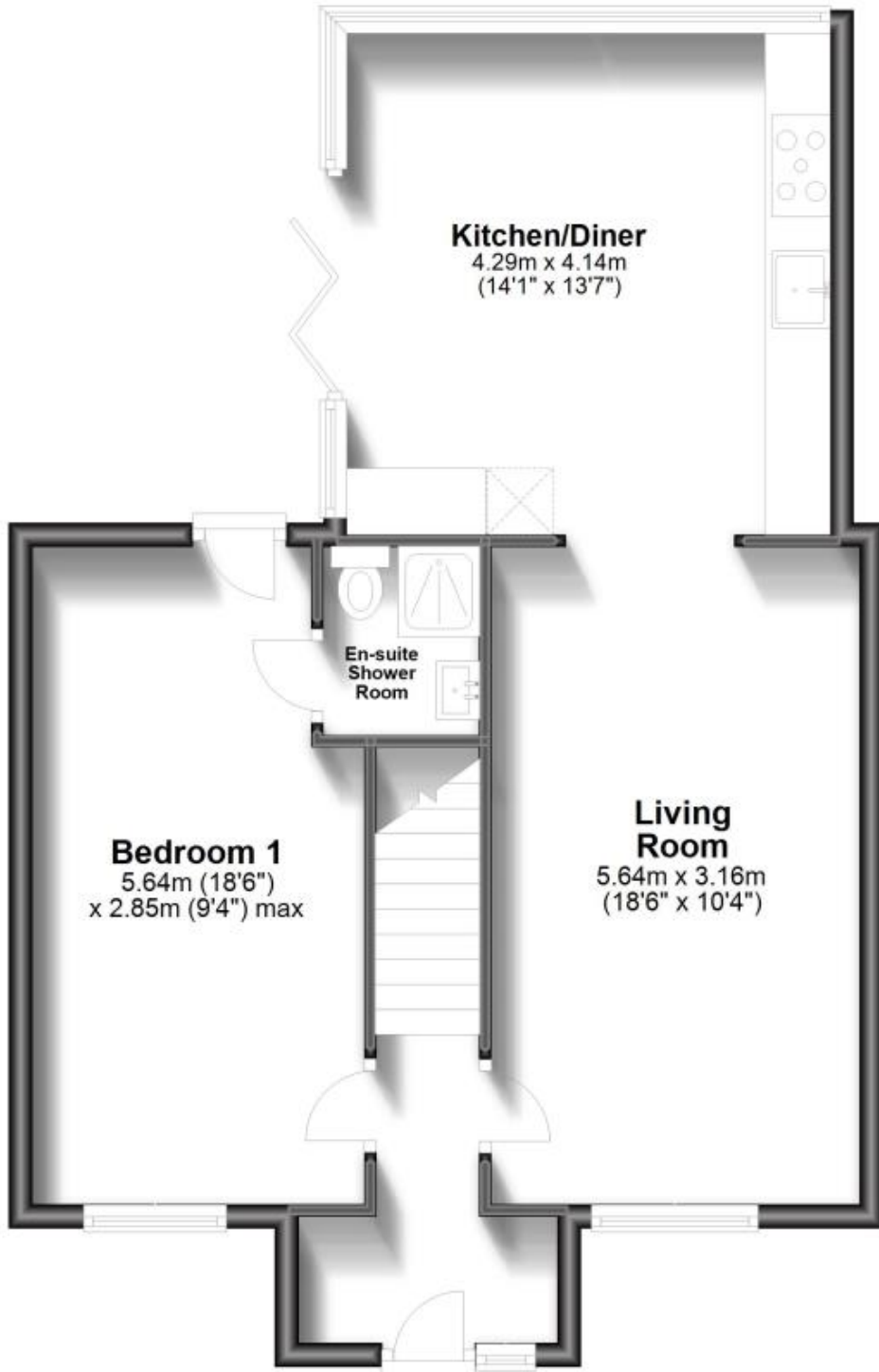
- Porch
- Entrance Hall
- Living Room
- Kitchen/Diner
- Bedroom 1
- En-Suite Shower Room
- Landing
- Bedroom 2
- Shower Room
- Bedroom 3

- Shower Room
- Bedroom 4
- Driveway
- Garden



## Ground Floor

Approx. 60.8 sq. metres (654.4 sq. feet)



## First Floor

Approx. 40.6 sq. metres (437.1 sq. feet)

