



Price

£1,550 PCM

Fees Apply



Available 04/03/24

Penenden Street
Maidstone ME14

Wards

Helping you move forwards



Main Features

- Semi Detached Home
- Video Walk About Available
- -- Versatile Living Accommodation
- Modern Kitchen & Bathroom
- Low Maintenance Garden
- Perfect Central Location



Deposit required is £1,788.46
Maidstone District - Council Tax Band Tax Band C

Renting a property is a big commitment and we recommend that you visit the local authority website and these websites which offer helpful information and advice about letting

www.gov.uk/government/publications/how-to-rent

www.gov.uk/private-renting

www.wardsofkent.co.uk/renting/tenancy-fees-individuals/

www.gov.uk/green-deal-energy-saving-measures

Call Maidstone 01622 675064 ■ wardsofkent.co.uk

IMPORTANT INFORMATION: Please contact our Lettings Team who will confirm the total costs involved in renting this property. For clarification, we wish to inform the prospective tenant that we have prepared these details as a general guide. The agent has not carried out a detailed survey nor tested the services, appliances, or specific fittings (unless otherwise stated), and no warranty can be given as to their condition. All room measurements are taken at floor level. We strongly recommend that all the information which we provide about the property is verified by yourself and your advisers. The contents of this publication are © Wards, 2015. Wards is a trading name of Arun Estates Limited Registered in England No. 2597969

Accommodation

Hallway

Lounge Area 3.71x3.47

Dining Area 4.53x4.35

Kitchen 3.86x2.79

Stairs & Landing

Bedroom 1 3.52x3.40

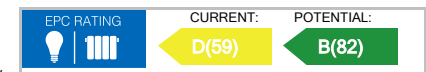
Bedroom 2 3.38x2.43

Bathroom

Stairs To Basement

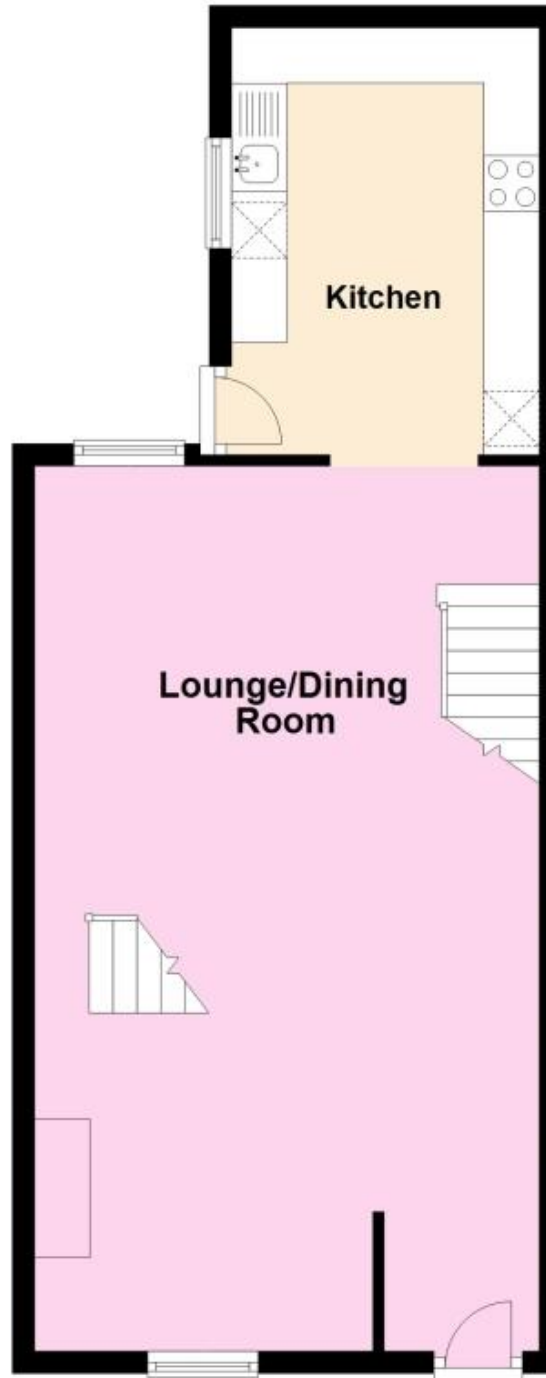
Bedroom 3 3.35x3.19

Basement Room 4.18x3.27



Ground Floor

Approx. 47.5 sq. metres (511.2 sq. feet)



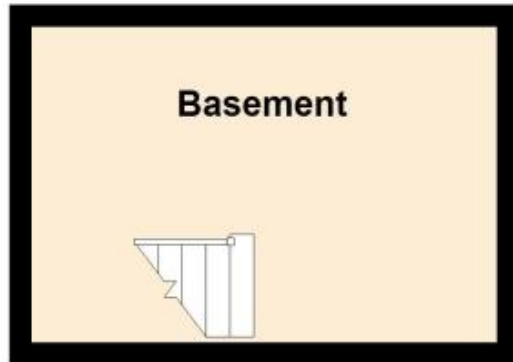
First Floor

Approx. 37.6 sq. metres (404.6 sq. feet)



Basement

Approx. 12.0 sq. metres (128.8 sq. feet)



Total area: approx. 97.1 sq. metres (1044.6 sq. feet)