



## Price

£2,150 PCM

Fees Apply



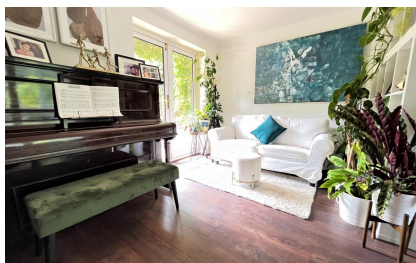
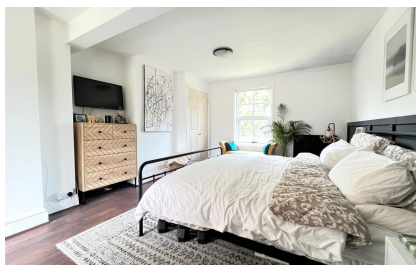
Available 05/04/24

Marden Road  
Staplehurst TN12

*Wards*

Helping you move forwards





## Main Features

- Semi-Detached Four Bed Cottage
- Video Walk About Available
- Sweeping Driveway & Double Garage
- Close To Mainline Station To London
- Furnished or Un-Furnished
- Stunning Countryside Views



Deposit required is **£2,480.77**  
Maidstone District - Council Tax Band Tax Band E

Renting a property is a big commitment and we recommend that you visit the local authority website and these websites which offer helpful information and advice about letting

[www.gov.uk/government/publications/how-to-rent](http://www.gov.uk/government/publications/how-to-rent)

[www.gov.uk/private-renting](http://www.gov.uk/private-renting)

[www.wardsofkent.co.uk/renting/tenancy-fees-individuals/](http://www.wardsofkent.co.uk/renting/tenancy-fees-individuals/)

[www.gov.uk/green-deal-energy-saving-measures](http://www.gov.uk/green-deal-energy-saving-measures)

Call Maidstone 01622 675064 ■ [wardsofkent.co.uk](http://wardsofkent.co.uk)

IMPORTANT INFORMATION: Please contact our Lettings Team who will confirm the total costs involved in renting this property. For clarification, we wish to inform the prospective tenant that we have prepared these details as a general guide. The agent has not carried out a detailed survey nor tested the services, appliances, or specific fittings (unless otherwise stated), and no warranty can be given as to their condition. All room measurements are taken at floor level. We strongly recommend that all the information which we provide about the property is verified by yourself and your advisers. The contents of this publication are © Wards, 2015. Wards is a trading name of Arun Estates Limited Registered in England No. 2597969

## Accommodation

### Entrance Hall

Entrance Hall Seating area 2.24m x 2.08m

Kitchen 3.81m x 3.4m

Conservatory 3.12m x 2.18m

Sitting/Dining Room 7.11m x 3.4m

### Stairs & 1st Landing

Bedroom 1 6.22m x 3.18m

Ensuite Shower Room 2.97m x 0.94m

Bedroom 2 3.28m x 2.11m

Family Bathroom 2.39m x 1.88m

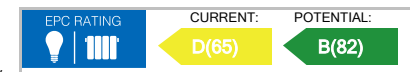
### Stairs & 2nd Landing

Bedroom 3 3.61m x 2.87m

Bedroom 4 4.29m x 3.33m

### Driveway

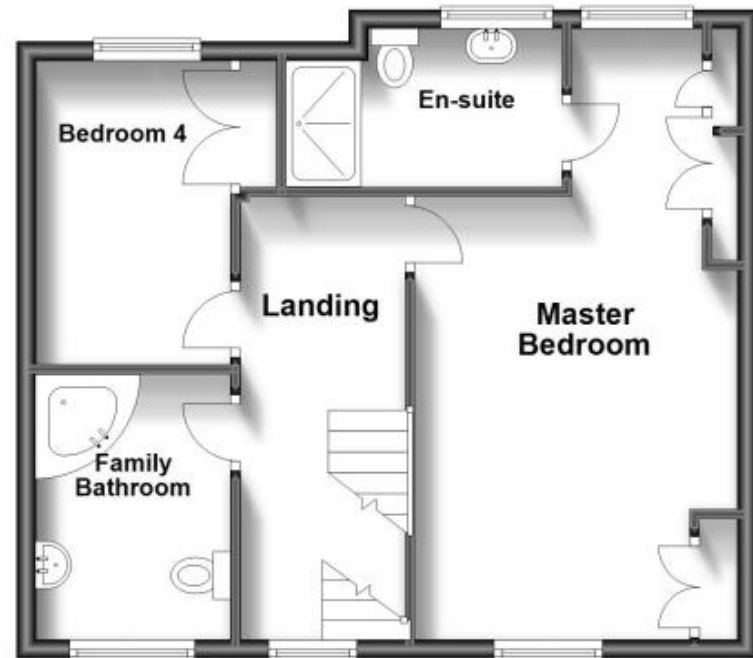
### Garden



### Ground Floor



### First Floor



### Second Floor

