



**Price**

**£1,500 PCM**

Fees Apply



Available 31/01/24

**Bethnell Road  
Faversham ME13**

*Wards*  
Helping you move forwards



## Main Features

- **\*\*No Deposit Option Available \*\***
- **\*\* Open house viewing Saturday \*\***
- **Brand new**
- **Driveway parking with car charger**
- **En-suite bathroom to the master bedroom**
- **Available immediately**



**Deposit required is £1,730.77**  
**- Council Tax Band Tax Band D**

Renting a property is a big commitment and we recommend that you visit the local authority website and these websites which offer helpful information and advice about letting

[www.gov.uk/government/publications/how-to-rent](http://www.gov.uk/government/publications/how-to-rent)

[www.gov.uk/private-renting](http://www.gov.uk/private-renting)

[www.wardsofkent.co.uk/letting/our-tenancy-fees/](http://www.wardsofkent.co.uk/letting/our-tenancy-fees/)

[www.gov.uk/green-deal-energy-saving-measures](http://www.gov.uk/green-deal-energy-saving-measures)

**Call Herne Bay 01227 361740 ■ [wardsofkent.co.uk](http://wardsofkent.co.uk)**

IMPORTANT INFORMATION: Please note that administration fees are charged in addition to the rent and security deposit. Please contact our Lettings Team who will confirm the total costs involved in renting this property. For clarification, we wish to inform the prospective tenant that we have prepared these details as a general guide. The agent has not carried out a detailed survey nor tested the services, appliances, or specific fittings (unless otherwise stated), and no warranty can be given as to their condition. All room measurements are taken at floor level. We strongly recommend that all the information which we provide about the property is verified by yourself and your advisers. The contents of this publication are © Wards, 2015. Wards is a trading name of Arun Estates Limited Registered in England No. 2597969

## Accommodation

**Kitchen area** 3.62 x 2.45

**Lounge/Dining Area** 4.71 x 5.38

**Cloak Room**

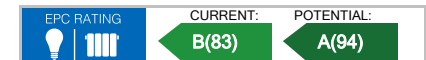
**Bedroom 1** 4.18 x 2.68

**En-Suite** 2.42 x 1.46

**Bedroom 2** 2.43 x 3.24

**Bedroom 3** 3.11 x 1.93

**Bathroom**



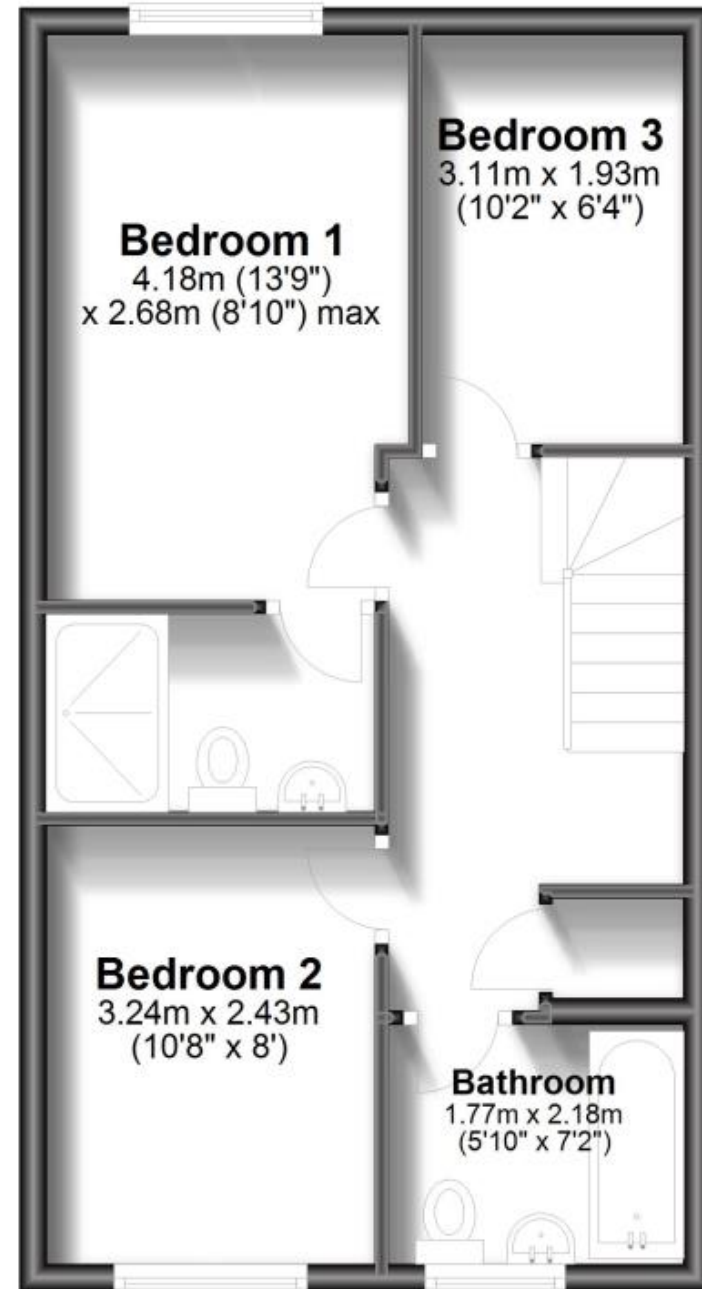
## Ground Floor

Approx. 42.9 sq. metres (461.4 sq. feet)



## First Floor

Approx. 42.9 sq. metres (461.9 sq. feet)



Total area: approx. 85.8 sq. metres (923.2 sq. feet)