

Available with  
no deposit



**Price**

**£1,500 PCM**

Fees Apply

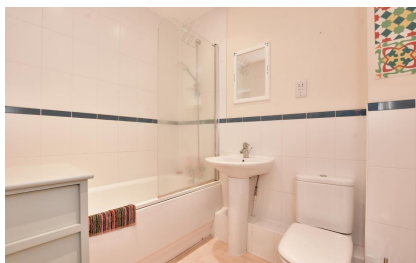


Available 16/02/24

**Exchange Court  
Tonbridge TN9**

*Wards*

Helping you move forwards



## Main Features

- Juliette balcony
- Allocated parking
- En-suite & bathroom
- Excellent location
- 6-month tenancy
- Furnished



Deposit required is £1,730.77  
Tonbridge and Malling District - Council Tax Band Tax Band D

Renting a property is a big commitment and we recommend that you visit the local authority website and these websites which offer helpful information and advice about letting

[www.gov.uk/government/publications/how-to-rent](http://www.gov.uk/government/publications/how-to-rent)

[www.gov.uk/private-renting](http://www.gov.uk/private-renting)

[www.wardsofkent.co.uk/renting/tenancy-fees-individuals/](http://www.wardsofkent.co.uk/renting/tenancy-fees-individuals/)

[www.gov.uk/green-deal-energy-saving-measures](http://www.gov.uk/green-deal-energy-saving-measures)

Call Tonbridge 01732 770833 ■ [wardsofkent.co.uk](http://wardsofkent.co.uk)

IMPORTANT INFORMATION: Please contact our Lettings Team who will confirm the total costs involved in renting this property. For clarification, we wish to inform the prospective tenant that we have prepared these details as a general guide. The agent has not carried out a detailed survey nor tested the services, appliances, or specific fittings (unless otherwise stated), and no warranty can be given as to their condition. All room measurements are taken at floor level. We strongly recommend that all the information which we provide about the property is verified by yourself and your advisers. The contents of this publication are © Wards, 2015. Wards is a trading name of Arun Estates Limited Registered in England No. 2597969

## Accommodation

Entrance hallway

Bathroom 2.24 x 1.78

Lounge/Diner 4.60 x 3.66

Kitchen

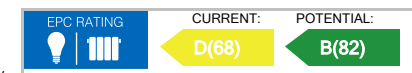
Bedroom 1 3.79 x 3.10

En-suite shower room

Bedroom 2 3.48 x 2.77

Balcony

Allocated parking





**Balcony**

**Bedroom 1**

**Lounge/Diner**

**Kitchen**

**Bedroom 2**