



Price

£950 PCM

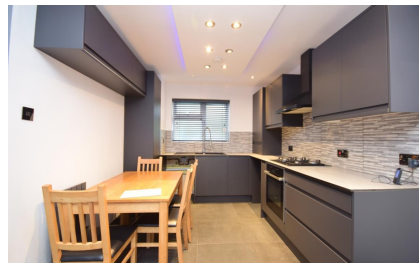
Fees Apply



Available 20/01/24

Peter Street
Folkestone CT20

Wards
Helping you move forwards



Main Features

- 2 double bedrooms
- Top floor apartment
- Modern throughout
- No deposit option considered
- Open house event
- Video tour available

Accommodation



Deposit required is £1,096.15
Shepway District - Council Tax Band Tax Band A

Renting a property is a big commitment and we recommend that you visit the local authority website and these websites which offer helpful information and advice about letting

www.gov.uk/government/publications/how-to-rent

www.gov.uk/private-renting

www.wardsofkent.co.uk/letting/our-tenancy-fees/

www.gov.uk/green-deal-energy-saving-measures

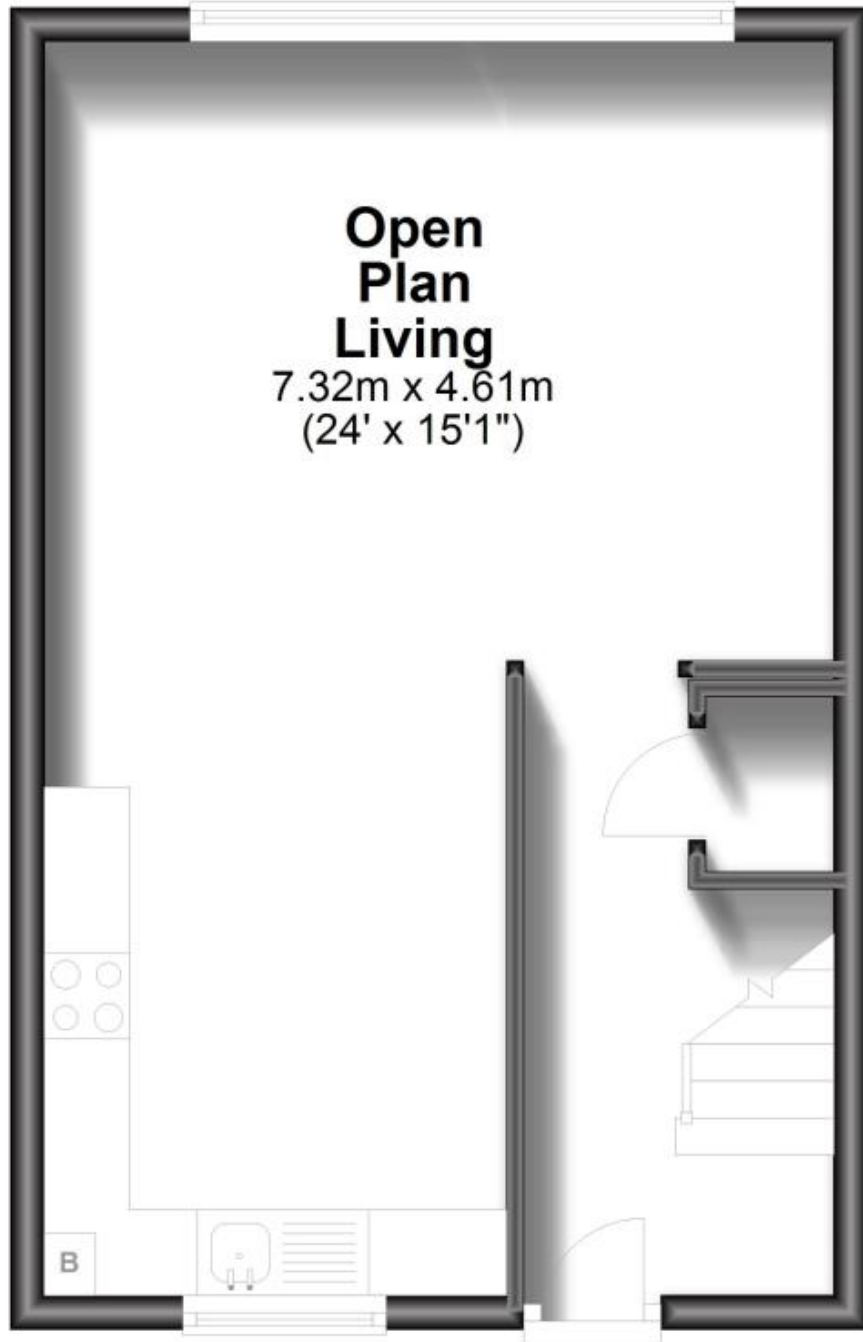
Call Dover 01304 201109 ■ wardsofkent.co.uk

IMPORTANT INFORMATION: Please note that administration fees are charged in addition to the rent and security deposit. Please contact our Lettings Team who will confirm the total costs involved in renting this property. For clarification, we wish to inform the prospective tenant that we have prepared these details as a general guide. The agent has not carried out a detailed survey nor tested the services, appliances, or specific fittings (unless otherwise stated), and no warranty can be given as to their condition. All room measurements are taken at floor level. We strongly recommend that all the information which we provide about the property is verified by yourself and your advisers. The contents of this publication are © Wards, 2015. Wards is a trading name of Arun Estates Limited Registered in England No. 2597969



Split Level Top Floor

Approx. 33.8 sq. metres (363.4 sq. feet)



Top Floor

Approx. 30.3 sq. metres (325.8 sq. feet)

